

GA03602003  
(B3HN6311SY)



## **Fitting Guide**

### **HINO 300 SERIES 036A**

### **STANDARD CAB 11-06/20**

Deluxe 3 Bullbar  
VEHICLE FRONTAL PROTECTION SYSTEM (VFPS)  
FOR AIR BAG & ADR COMPLIANT VEHICLES



# Index

---

## Pages 4-5

Stage 1	Vehicle Preparation
Stage 2	Unplug Wiring
Stage 3	Remove bumper
Stage 4	Tow hook removal
Stage 5	Bolt removal
Stage 6	Bolt loosening

## Pages 6-7

Stages 7-9	Steel Mounting bracket installation
Stage 10	Patch harness connection
Stage 11	Fog light removal
Stage 12	Harness removal

## Pages 8-9

Stage 13	Halogen fog light installation
Stages 14-16	LED fog light installation
Stage 17	Bullbar installation
Stage 18	Hinge bolt installation

## Pages 10-11

Stage 19	Final Checks
Stage 20	Tilt Warning Sticker Installatio
Supplied Product Assemblies	

## Pages 12-13

Fitting Kit
Torque Guide
Finished Product

**NOTE:** These instructions are to be used as a guide for installation of this component to the specified HINO model. Please ensure you check the component is applicability before installation. This work should be done by a qualified installer/technician and all care must be taken to ensure all steps are completed. Failure to do so may risk conformity to HINO component warranty and/or compliance. If you have any issues or concerns with this installation please contact 1300 01 HINO.

# GA03602003

## Stage 1

- Park the vehicle on level ground and apply the park brake.
- Check installation hardware and read fitting instructions before commencing.
- Lift bonnet.



## Stage 2

- Disconnect fog light wiring connector from rear of bumper.



View from behind centre of bumper

## Stage 3

- Remove bumper three (3) bolts per side.
- Retain bumper and discard bolts.



# 300 Series 036A Standard Cab

## Stage 4

- Remove tow hook from passengers side of chassis. Two (2) bolts.
- Discard tow hook and bolts.



## Stage 5

- Remove and discard two (2) bolts retaining front of A/C condenser mounting bracket to chassis.



Drivers side pictured

## Stage 6

- Loosen (do not remove) two (2) bolts retaining rear of A/C condenser mount bracket to chassis.



Drivers side rear of condenser mount pictured

# GA03602003

## Stage 7

- Remove steel mounting bracket from bullbar and attach to the truck chassis.
- On drivers side the mounting bracket fits between the chassis and A/C condenser mount.
- Secure drivers side using M10 x 1.25 x 40mm bolts, spring washers and flat washers into captive nuts.
- **Leave bolts loose.**



Drivers side pictured

## Stage 8

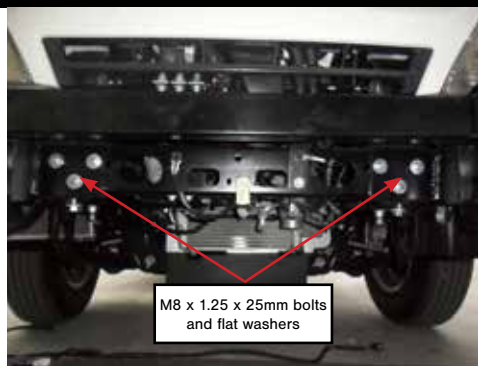
- Secure passengers side of mount to chassis using 3/8 x 1 1/2 bolt, flat washers and nyloc nut in the top hole and 1/2 x 1 1/2 bolt, flat washers and nyloc nut in bottom hole.
- **Leave bolts loose.**



Passengers side pictured.

## Stage 9

- Secure front of mounting bracket to chassis using M8 x 1.25 x 25mm bolts and flat washers.
- **Leave bolts loose.**



M8 x 1.25 x 25mm bolts  
and flat washers

# 300 Series 036A Standard Cab

## Stage 10

- Disconnect parker and indicator wiring connectors at lights and connect patch harnesses to original connectors.



Passengers side pictured.

## Stage 11

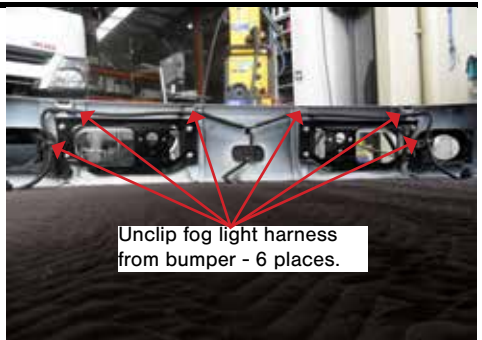
- Lay bumper face down on a blanket and disconnect for light connectors.
- Remove fog lights from bumper, four (4) Phillips head screws per light.
- Put lights in a safe place and discard screws.



Passengers side pictured.

## Stage 12

- Unclip fog light harness from rear of bumper.
- Retain harness.
- Discard bumper.



# GA03602003

## Stage 13

(For Halogen lights only, See next step for LED lights)

Lay bullbar face down on a blanket.

- Fit fog light mount brackets supplied to fog lights using M6 x 20mm bolts and whiz lock nuts.
- Fit fog lights to bullbar using 2 (two) M10 x 1.5 x 25mm bolts, flat washers, spring washers and nuts.
- Align lights in bullbar and tighten bolts.



## Stage 14

(For LED lights only)

- With a set of long nose pliers, crimp adjusting bolts hold in wing just to inside of casing and gently remove from casing.
- Remove adjustment bolt from light.
- Using a flat blade screwdriver, gently pry sides of light away from casing and remove from casing.



## Stage 15

(For LED lights only)

Please note, light brackets are sided.

- Using correct mount for foglight side, place foglight between tabs and lock in position. Tabs may need to spread or shrink to lock into position on sides of light.
- Attach to rear tab behind fog light using one M5 x 20mm PK screw.





# 300 Series 036A Standard Cab

## Stage 16

(For LED lights only)

- Attach fog light bracket to rear of protection bar using two M10 x 25 bolts, flat washers and nyloc nuts.
- Align light by adjusting at these points when Protection bar is fitted to vehicle.
- Tighten all bolts.



## Stage 17

- Fit bullbar to mounting bracket using eye bolts with flat washers.
- Leave loose.



## Stage 18

- Align bullbar to pivot points and secure using two (2) 9/16 x 2 1/2 bolts, flat washers and nyloc nuts (hinge bolts)
- Tighten bolts until alloy tabs on bullbar just start to pull in.
- **TIGHTEN EYE BOLTS**



Passengers side pictured.

# GA03602003

---

## Stage 19

- Remove eye bolts and check bullbar tilt.
- Reconnect fog light wiring and cable tie harness along steel bullbar mount.
- Connect parker / indicator wiring to lights in bullbar.
- Check all light operation.



View with bullbar tilted from drivers side

---

## Stage 20

- Fit tilt bullbar warning sticker to passengers side rear of cabin near tilt lever.



# 300 Series 036A Standard Cab

## Supplied Product Assemblies

Fig.1 - 1x Bullbar assembly

Fig.2 - 1x Steel mounting bracket (Fitted to Bar)

Fig.3 - Fog light mounting brackets

Fig.4 - 1 pair LED Fog brackets



Figure 1 - Bullbar assembly



Fig.2 - 1x Steel mounting bracket (Fitted to Bar)

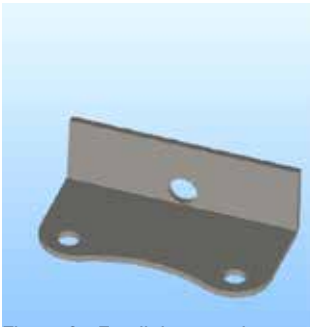


Figure 3 - Fog light mounting brackets (in kit)



Figure 4 - LED fog bracket - In Kit

# Fitting Kit

# GA03602003

## Pre-fitted bolts and Parts

1 - Steel mounting brackets	2 - 9/16" Nyloc Nuts
2 - 3/4 Eye Bolts	4 - 9/16" Flat Washers
2 - 3/4 flat washers	2 - 95202 Narva 10-33V LED Indicator / Park Lights
2 - 9/16" x 2 1/2" Hinge Bolts	

## Bullbar Fitting Kit

6 - M8 x 1.25 x 25mm bolts	1 - 1/2 x 1 1/2 bolt
6 - M8 Flat washers	1 - 1/2 nyloc nut
2 - M10 x 1.25 x 40mm bolts	2 - 1/2 HD washers
1 - 3/8 x 1 1/2 bolts	4 - 300mm Cable ties
1 - 3/8 Nyloc nut	2 - Parker / Indicator Patch Harnesses (ICH036A2011)
4 - M10 HD flat washers	1 - 300 Series Std Cab Patch Harness (ICH17HI300PATH)
2 - M10 spring washers	1 - Tilt Cab Warning Sticker

## Fog Light Fitting Kit

4 - Fog Light mounting brackets	4 - M10 x 1.5 x 25mm Bolts
1 - Pair LED foglight mounts	8 - M10 flat washers Flat washers
8 - M6 x 1.0 x 20mm Bolts	4 - M10 x 1.5 Nyloc Nuts
8 - M6 x 1.0 Whiz lock nuts	2 - M5 x 20 Pan head metal screws
8 - M6 x 16 flat washes	

## Torque Guide

Diameter	Thread Pitch	Recommended Assembly Setting	
M6	1.0mm	9.1Nm	6.8lbft
M8	1.25mm	22Nm	16.3lbft
M14	2mm	122Nm	90lbft
3/16	No torque setting required		
3/8	16 TPI	36.6Nm	27 lbft
1/2	13 TPI	124.7Nm	92 lbft
9/16 <sup>1</sup>	12	180.3Nm <sup>1</sup>	133 lbft <sup>1</sup> (See note)
3/4 Eye bolt	10 TPI	Hand tightened firmly only as overtightening will damage nylon washer	

Notes:

1. 9/16 bolts used to secure bullbar to steel mount require to be tightened only to touch the alloy mount firmly. Overtightening of this bolt will result in damage to the bullbar and possible inability to align bullbar correctly to vehicle.

# Finished Product

---







REPLACES: N/A  
REVISED: 26.08.21