

GA03602009



Fitting Guide

HINO 300 4x4

2017on

DELUXE 3 BULLBAR WITH TOWPIN
VEHICLE FRONTAL PROTECTION SYSTEM (VFPS)
FOR AIR BAG & ADR COMPLIANT VEHICLES

Index

Pages 2-3

Stage 1 - Vehicle Preparation
Stage 2 - Bumper Removal
Stage 3 - Bumper Mount Removal
Stage 4 - Tow Hook Removal
Stage 5 - Headlight Wiring
Stage 6 - Headlight Infill Prep

Pages 4-5

Stage 7 - Headlight Infill Fitment
Stage 8 - Chassis Rail Preparation
Stage 9 - Chassis Mount Installation
Stage 10 - Chassis Mount Installation
Stage 11 - Chassis Mount Installation
Stage 12 - Tow Hook Installation

Pages 6-7

Stage 13 - Bullbar Installation
Stage 14 - Finishing connections & Checks
Supplied Product Assemblies

Pages 8-9

Fitting Kit
Torque Guide
Finished Product

NOTE: These instructions are to be used as a guide for installation of this component to the specified HINO model. Please ensure you check the component is applicability before installation. This work should be done by a qualified installer/technician and all care must be taken to ensure all steps are completed. Failure to do so may risk conformity to HINO component warranty and/or compliance. If you have any issues or concerns with this installation please contact 1300 01 HINO.

BULLBAR

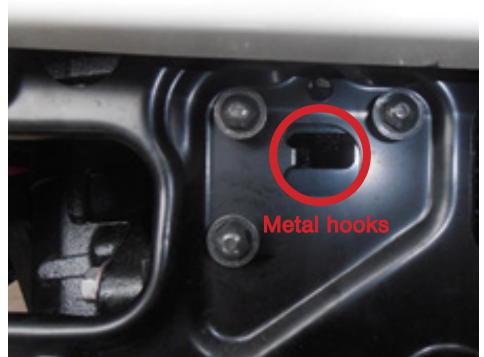
Stage 1

- Park the vehicle on level ground and apply the park brake.
- Check installation hardware and read fitting instructions before commencing.
- Un-plug the drive harness and release the clip retaining the harness from the front of the vehicle chassis. Retain harness inside the bumper.



Stage 2

- Remove six (6) M8 bolts from the front bumper.
- Metal hooks will retain bumper in position.
- Lift bumper to remove from hooks.



Stage 3

- Located at the front end of chassis, release six (6) bolts retaining chassis adapter plates and remove.
- Discard bolts and adapter plates



HINO 300 4x4

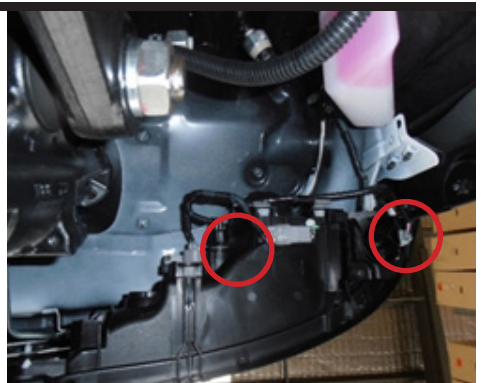
Stage 4

- Remove tow hook and adapter from passenger side of the chassis rail.
- Discard adapter bracket and bolts



Stage 5

- Un-clip indicator and park light harness from the rear of headlight assembly and attach the supplied indicator harness to indicator and park light plugs then the adapter plugs to the original light plugs.
- Remove indicator fitting from light and remove bulb. Refit light fitting without bulb.
- Image from under vehicle



Stage 6

- Remove the bolt on the lower outer edge of each head light and use to retain the infill strips under each head light.
- Install bolt into lower outer edge of headlight through infill panel. **Finger tighten only.**



BULLBAR

Stage 7

- Bend the infill strips around the lower edge of the light body and fasten using one (1) 3/16 x 3/4" metal thread and nyloc nut each side of the vehicle.
- Drill inner hole below headlight and fasten using one (1) 3/16 x 3/4" metal thread and nyloc nut.
- **Tighten all bolts.**



Stage 8

- From under the driver side chassis rail, remove one (1) M14 (long) bolt and one (1) M14 nut that travels up through the chassis rail.
- Loosen same bolts on passengers side but do not remove yet. This allows the drivers side of the step to hang.
- **NOTE:** Step has been removed for photo



Stage 9

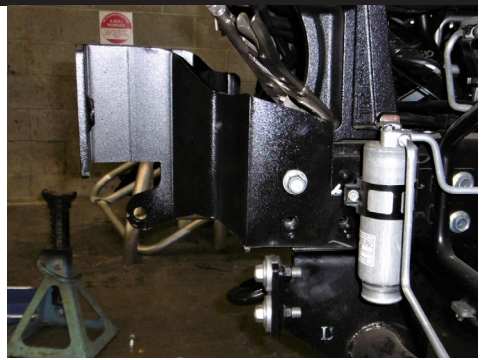
- On the driver side of the vehicle, position the chassis mount onto the chassis rails, level and fasten using two (2) M14 x 200 x 2mm bolts (supplied), flat washers and nyloc nuts. Install three (3) M8 x 30 x 1.25mm bolts, three (3) 3 hole plate, flat and spring washers (on the front face of each chassis mount).
- **NOTE:** 4WD step has been removed for photo



HINO 300 4x4

Stage 10

- On passengers side underside of rail, install three (3) M14 x 50 x 1.5mm bolts, flat and spring washer into side of chassis rail.
- Install three (3) M8 x 30 x 1.25mm bolts, three (3) 3 hole plate, flat and spring washers (on the front face of each chassis mount) tow hook, steps, spacer plates and chassis rail.
- **Tighten all bolts.**



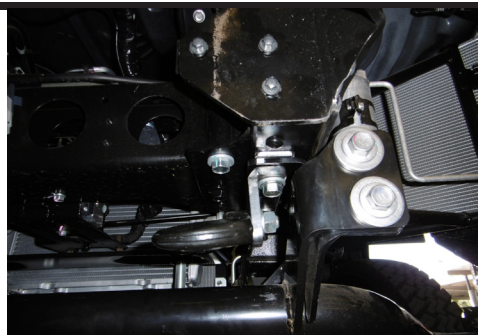
Stage 11

- On passengers side underside of rail, remove previously undone M14 nut and bolt from rear hole and bolt only from front hole.
- Place spacer plate above step.
- Install two (2) M14 x 200 x 2mm bolts, flat washers and nyloc nut for rear bolt and original nut plate for front bolt through tow hook, (steps, spacer plates on 4WD) and chassis rail.
- Align mounts to level across top of mount. **Tighten all bolts.**



Stage 12

- Install tow hook to inside of tow hook mount using two (2) M14 x 70 bolts, flat washer, spring washers and nuts.



BULLBAR

Stage 13

- Fit the Bullbar onto the chassis mounts. Loosely attach to front using eyebolts, then fasten through the hinge holes using 9/16" x 2-1/2" UNC bolts, flat washers and nyloc nuts.
- **Note:** Manually tighten the hinge bolt. Ensure nuts just bear on the flat washer lightly.



Stage 14

- Connect the supplied indicator harness to indicator and park light plugs fitted to the Bullbar.
- Cable tie the indicator harnesses.
- **Note:** Allow enough length for the Bullbar to tilt without the cable tightening causing damage.
- Apply the tilt cab sticker above cabin tilt lever if required.
- Check the operation of all lights.
- Tilt protection into position and install eyebolts and washers. Tighten firmly.
- Install numberplate hinge to protection bar 3 - M6 x 20 bolts, Flat washers and nyloc nuts.
- If fitted, install number plate to number plate hinge using two M5 x 20 bolts, flat washers and nyloc nuts.

HINO 300 4x4

Supplied Product Assemblies

Fig 1 - Steel mounting bracket - **Fitted to bar**

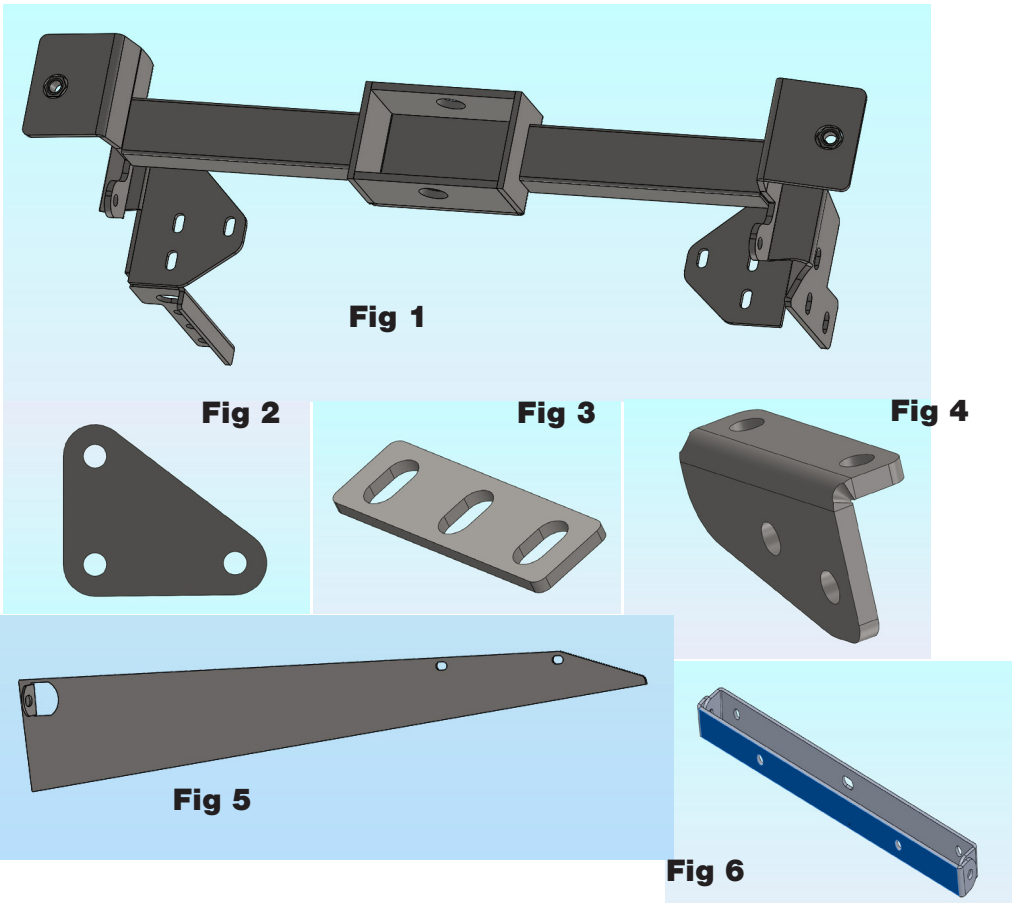
Fig 2 - 2 x 3 hole chassis mount washer plate (B3HN00321SY_A4MS) - **In bolt kit**

Fig 3 - 1 x 3 hole chassis spacer plate (B3HN6323SY_F6MS) - **In bolt kit**

Fig 4 - Tow hook mount (B3HN6322_A10MS) - **In bolt kit**

Fig 5 - Pair Infill panels (High horsepower 2014+)

Fig 6 - Numberplate Hinge Bracket - **In bolt kit**



Fitting Kit

Pre-fitted bolts and Parts

2 - 9/16" x 2 1/2" UNC hex bolts (fitted to bar)	2 - 3/4" Eyebolts (fitted to bar)
2 - 9/16" UNC Nyloc nuts (fitted to bar)	2 - 3/4" Nylon washers (fitted to bar)
4 - 9/16" flat washers (fitted to bar)	1 - Pair Incandescent Blank Indicator / Park lights (fitted to bar) (IC87270-24 B)

Fitting Kit

2 - 3 hole chassis mount washer plate (B3HN00321SY_A4MS)	3 - M6 x 20 bolts
1 - 3 hole chassis spacer plate (B3HN6323SY_F6MS)	6 - M6 flat washers
1 - Tow hook mount (B3HN6322_A10MS)	3 - M6 nyloc nuts
1 - Numberplate Hinge bracket - (316 long)	4 - 3/16 x 3/4 metal threads
4 - M14 x 2.0 x 200mm hex head bolts	4 - 3/16 nyloc nuts
2 - M14 x 1.5 x 70mm hex head bolts	8 - M5 x 20mm phillips metal thread screws
3 - M14 x 1.5 x 40mm hex head bolts	14 - M5 flat washers
15 - M14 flat washers	6 - M5 nyloc nuts
9 - M14 spring washers	1 - 225mm tow pin
2 - M14 x 1.5 nyloc nuts	1 - Towpin nylon washer
4 - M14 x 2 nyloc nuts	2 - Patch Harnesses (IC20HI300IPH)
6 - M8 x 1.25 x 30mm bolts	4 - 150mm Cable ties
6 - M8 flat washers	1 - Tilt cab sticker
6 - M8 spring washers	

Torque Guide

Diameter	Thread Pitch	Recomended Assembly Setting	
M6	1.0mm	9.1Nm	6.8lbft
M8	1.25mm	22Nm	16.3lbft
M10	1.5mm	44Nm	33lbft
M12	1.75mm	76Nm	57lbft
1/4"	UNC	14Nm	10lbft
5/16"	UNC	29Nm	21lbft
3/8"	UNC	51Nm	38lbft
1/2"	UNC	125Nm	92lbft
9/16"	UNC	442Nm	326lbft

Finished Product



REPLACES: 19.11.20
REVISED: 16.03.21