

**GA03602004**  
(B3HN6327SY)



## **Fitting Guide**

**HINO 300 SERIES**

**036A WIDE CAB**

**2011 ON**

Deluxe 3 Bullbar  
VEHICLE FRONTAL PROTECTION SYSTEM (VFPS)  
FOR AIR BAG & ADR COMPLIANT VEHICLES



# Index

---

## **Pages 2-3**

Index

Stage 1	Vehicle Preparation
Stage 2	Unplug Wiring
Stage 3	Remove bumper

## **Pages 4-5**

Stage 4	Remove bumper lights
Stage 5	Remove Light Wiring
Stage 6	Indicator/ Park light Wiring
Stages 7 to 9	Light Infill Installation

## **Pages 6-7**

Stage 10	Tow Hook Removal
Stages 11 to 12	Steel Mounting Bracket Installation
Stage 13	Steel Mounting Bracket Installation
Stage 14	Light Installation
Stage 15	Protection Bar Installation

## **Pages 8-9**

Stages 16 to 17	Protection Bar Installation
Stage 18	Tilt Warning Sticker Installation

## **Supplied Product Assemblies**

## **Pages 10-11**

Fitting Kit
Torque Guide
Finished Product

**NOTE:** These instructions are to be used as a guide for installation of this component to the specified HINO model. Please ensure you check the component is applicability before installation. This work should be done by a qualified installer/technician and all care must be taken to ensure all steps are completed. Failure to do so may risk conformity to HINO component warranty and/or compliance. If you have any issues or concerns with this installation please contact 1300 01 HINO.



# B3HN6327SYF

## Stage 1

- Park the vehicle on level ground and apply the park brake. Check installation hardware and read fitting instructions before commencing.



## Stage 2

- Disconnect fog light wiring connector from rear of bumper through cavity behind licence plate mount area.



## Stage 3

- Remove 6 (six) bolts (3 per side) retaining the bumper.
- Retain the bumper discard the bolts.



# HINO 300 WIDE CAB

## Stage 4

- Lay bumper face down on a blanket and disconnect fog light wiring connectors.
- Remove fog lights from bumper by releasing 4 (four) Phillips head screws per light.
- Put lights in a safe place and discard screws. Retain bumper.

Note: Drivers side pictured



## Stage 5

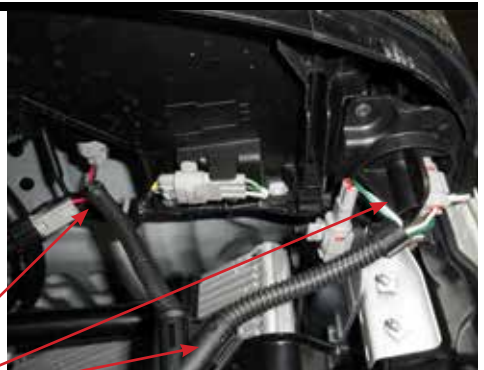
- Unclip fog lights wiring loom from rear of bumper. Retain wiring loom. Discard bumper.



## Stage 6

- Disconnect parker light wiring connector and indicator light wiring connector from headlights, each side of vehicle.
- Connect patch harness provided to light and original harness, each side of vehicle.

Parker connector  
Indicator connector  
Patch harness



# B3HN6327SY

## Stage 7

- Remove and retain M6 bolt from lower outer corner of headlight, each side of the vehicle.

M6 bolt



Note: Drivers side pictured

## Stage 8

- Secure tab on infill strip to lower outer hole in headlight using bolt previously removed.
- Tighten bolt and repeat for the other side.

Infill strip



Note: Drivers side pictured

## Stage 9

- Bend infill strip around under headlight and secure using 1 - 3/16" x 3/4" Screw and nyloc nut through inner headlight aim adjustment hole.
- Lightly tighten screw, repeat for the other side.



# HINO 300 WIDE CAB

## Stage 10

- Step 10. Remove tow hook from passengers side chassis. Retain tow hook and fasteners. Note: Passengers side pictured



## Stage 11

- Remove steel bullbar mount from bullbar and fit to the vehicle chassis, lightly fasten using 1 - M14 x 50mm bolt, spring and flat washer in captive nut on passengers side. 1 - 1/2" x 1/2" bolts, flat washers and nyloc nuts through chassis on drivers and passenger side. Refit tow hook using original bolts and 2 additional flat washers and 1 nut, tighten fully.



## Stage 12

- Lightly fasten the chassis mount front plates to captive nuts in front of chassis using 6 - M8 x 25 bolts and flat washers.

Note: Passengers side pictured





# B3HN6327SY

## Stage 13

- A 4mm spacer may need to be fitted to the front of the chassis on the drivers side between the front chassis and chassis mount plate to allow for vehicle chassis mis-alignment.

Note: Drivers side pictured



## Stage 14

(For Halogen lights only, See next step for LED lights)

Lay bullbar face down on a blanket.

- Fit fog light mount brackets supplied to fog lights using M6 x 20mm bolts and whiz lock nuts.
- Fit fog lights to bullbar using 2 (two) M10 x 1.5 x 25mm bolts, flat washers, spring washers and nuts.
- Align lights in bullbar and tighten bolts.



## Stage 15

(For LED lights only)

- With a set of long nose pliers, crimp adjusting bolts hold in wing just to inside of casing and gently remove from casing.
- Remove adjustment bolt from light.
- Using a flat blade screwdriver, gently pry sides of light away from casing and remove from casing.



# HINO 300 WIDE CAB

## Stage 16

(For LED lights only)

Please note, light brackets are sided.

- Using correct mount for foglight side, place foglight between tabs and lock in position. Tabs may need to spread or shrink to lock into position on sides of light.
- Attach to rear tab behind fog light using one M5 x 20mm PK screw.



## Stage 17

- Attach fog light bracket to rear of protection bar using two M10 x 25 bolts, flat washers and nyloc nuts.
- Align light by adjusting at these points when Protection bar is fitted to vehicle.
- Tighten all bolts.



## Stage 18

- Fit bullbar to mount loosely using 3/4" eye bolts with flat washers.

3/4" eye bolts



# HINO 300 WIDE CAB

## Stage 19

- Align hinge bolt holes and fasten using 9/16" x 2 1/2" bolts, flat washers and nyloc nuts.
- Tighten so nylon on nut engages on bolt and tabs on bullbar just start to pull in.
- Fit indicators to the Bull bar.



## Stage 20

- Tighten eye bolts.
- Align bullbar with vehicle and tighten all mount bolts, Tighten front (M8) bolts last.
- Remove eye bolts and check bullbar tilt.
- Reconnect fog light wiring connectors and cable tie harness to steel mount.
- Connect parker/indicator connectors, adapters and check the operation of all lights.



## Stage 21

- Fit Tilt Bullbar Warning sticker to passengers side rear of cabin near tilt lever.



# B3HN6327SY

---

## Supplied Product Assemblies

Fig.1 - 1x Bullbar assembly

Fig.2 - 1x Steel mounting bracket (Fitted to Bar)

Fig.3 - Chassis mount spacer (4mm thick)

Fig.4 - Washer plate (6mm thick)

Fig.5 - Fog light mounting brackets

Fig.6 - 1 pair of infills (2011)

Fig.7 - 1 pair LED Fog brackets

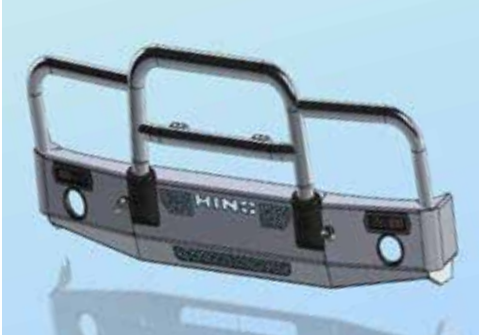


Figure 1 - Bullbar assembly

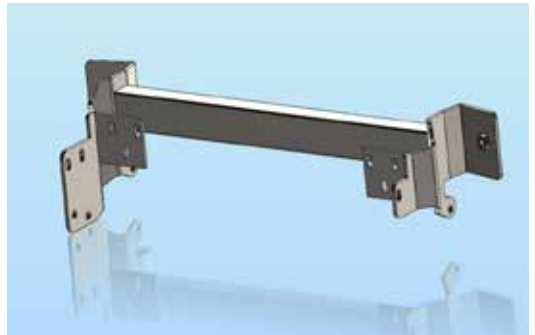


Figure 2 - Steel mounting bracket (fitted to bar)



Figure 3 - Chassis mount spacer (4mm thick)

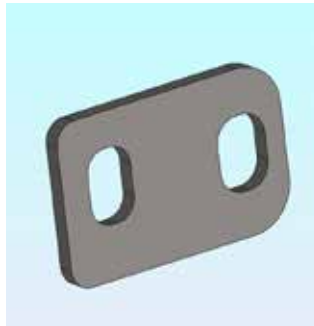


Figure 4 - Washer plate (6mm thick)

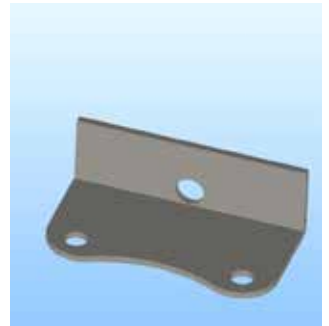


Figure 5 - Fog light mounting brackets



Figure 6 - 1 pair of infills (2011)



Figure 7 - LED fog bracket

## Pre-fitted bolts and Parts

1 - Steel mounting brackets (YB3HN6327SY)	2 - 9/16" Nyloc Nuts
2 - 3/4 Eye Bolts	4 - 9/16" Flat Washers
2 - 3/4 flat washers	1 - Pair of ICLED0104BL Park / Indicator Lights
2 - 9/16" x 2 1/2" Hinge Bolts	2 - Fog Light surrounds

## Bull Bar Fitting Kit

1 - Chassis mount spacer (4mm thick) (in Kit)	1 - M14 x 1.5 X 50mm Bolt
1 - Washer plate (6mm thick) (in Kit)	1 - M14 Spring washer
2 - 3/16" x 3/4" Pan head metal screws	3 - M14 Flat washers
2 - 3/16" Nyloc nuts	1 - M14 x 1.5 Nut
6 - M8 x 1.25 x 25mm Bolts	4 - 300mm Cable ties
6 - M8 Flat washers	2 - Patch Harnesses supplied (A36 ICH 036A)
2 - 1/2" x 1 1/2" Bolts	2 - Patch Harness Adapters
4 - 1/2" Flat washers	1 - Pair Infill strip (36A) 2011+
2 - 1/2" Nyloc nuts	1 - Tilt Cab Warning Sticker

## Fog Light Fitting Kit

4 - Fog Light mounting brackets	4 - M10 x 1.5 x 25mm Bolts
1 - Pair LED foglight mounts	8 - M10 flat washers Flat washers
8 - M6 x 1.0 x 20mm Bolts	4 - M10 x 1.5 Nyloc Nuts
8 - M6 x 1.0 Whiz lock nuts	2 - M5 x 20 Pan head metal screws
8 - M6 x 16 flat washes	

## Torque Guide

Diameter	Thread Pitch	Recomended Assembly Setting	
M6	1.0mm	9.1Nm	6.8lbft
M8	1.25mm	22Nm	16.3lbft
M14	2mm	122Nm	90lbft
3/16	No torque setting required		
3/8	16 TPI	36.6Nm	27 lbft
1/2	13 TPI	124.7Nm	92 lbft
9/16 <sup>1</sup>	12	180.3Nm <sup>1</sup>	133 lbft <sup>1</sup> (See note)
3/4 Eye bolt	10 TPI	Hand tightened firmly only as overtightening will damage nylon washer	

### Notes:

1. 9/16 bolts used to secure bullbar to steel mount require to be tightened only to touch the alloy mount firmly. Overtightening of this bolt will result in damage to the bullbar and possible inability to align bullbar correctly to vehicle.

# Finished Product

---





REPLACES: N/A  
REVISED: 08.10.19

