

GA03602002/GA10002003
(B3HN6329TSY)



Non towpin bullbar shown

Fitting Guide

HINO 300 SERIES EURO 5

36A WIDE CAB 03/2014on

Hi HORSEPOWER

Deluxe 3 Bullbar with Towpin
VEHICLE FRONTAL PROTECTION SYSTEM (VFPS)
FOR AIR BAG & ADR COMPLIANT VEHICLES

Index

Page 2

Index

Pages 3-4

| | |
|---------|-------------------------------|
| Stage 1 | Vehicle Preparation |
| Stage 2 | Bumper Door End Cover Removal |
| Stage 3 | Upper Grille Removal |
| Stage 4 | Lower Grille Removal |
| Stage 5 | Bumper Plastics Removal |
| Stage 6 | Step and Fog Light Removal |

Pages 5-6

| | |
|----------|---|
| Stage 7 | Chassis preparation |
| Stage 8 | Bumper Support preparation |
| Stage 9 | Trim Bumper support |
| Stage 10 | Grille Support Bracket Removal |
| Stage 11 | Steel mounting Bracket Installation |
| Stage 12 | Airbag and Temperature Sensor Refitment |

Pages 7-8

| | |
|----------|-----------------------------------|
| Stage 13 | Headlight Installation and Wiring |
| Stage 14 | Bullbar Installation |
| Stage 15 | Finishing, Checks and Alignments |

Pages 9-10

| |
|-----------------------------|
| Supplied Product Assemblies |
| Fitting Kit |
| Torque Guide |

Page 11

| |
|------------------|
| Finished Product |
|------------------|

NOTE: These instructions are to be used as a guide for installation of this component to the specified HINO model. Please ensure you check the component applicability before installation. This work should be done by a qualified installer/technician and all care must be taken to ensure all steps are completed. Failure to do so may risk conformity to HINO component warranty and/or compliance. If you have any issues or concerns with this installation please contact 1300 01 HINO.

B3HN6329TSY

Stage 1

- Park the vehicle on level ground and apply the park brake.
- Un-plug the drive harness and release the clip retaining the harness from the front of the vehicle chassis.
- Retain harness inside the bumper.



Stage 2

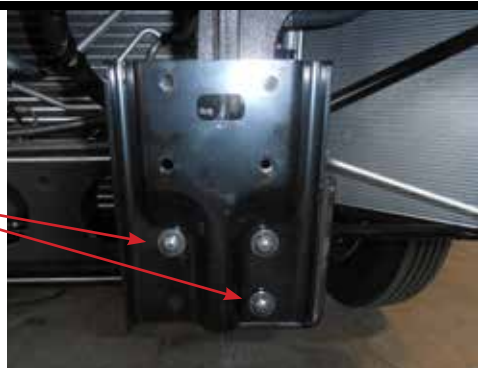
- Remove six (6) M8 bolts from the front bumper. Metal hooks will retain bumper in position.

Metal hooks



Stage 3

- Located at the front end of chassis, release six (6) bolts retaining chassis adaptor plates and remove.
- Discard bolts and adaptor plates



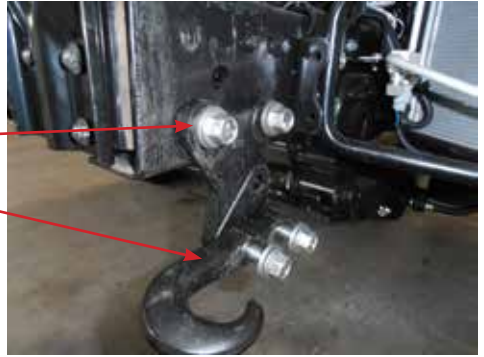
HINO 300 WIDE CAB

Stage 4

- Remove tow hook and adaptor from passenger side of the chassis rail.

Discard adaptor bracket and upper bolts

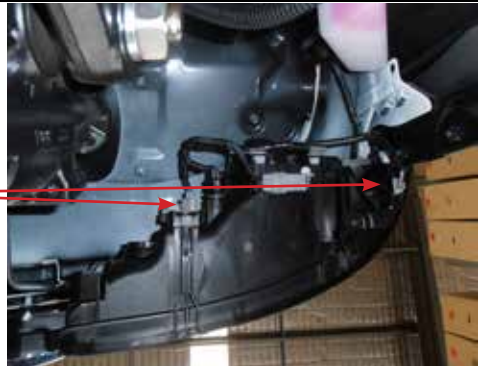
Retain tow hook and discard lower bolts



Stage 5

- Un-clip indicator and park light harness from the rear of headlight assembly and attach the supplied indicator harness to indicator and park light plugs then the adaptor plugs to the original light plugs.

Image from under vehicle



Stage 6

- Remove the bolt on the lower outer edge of each head light and use to retain the the infill strips under each head light.

Remove bolt on the lower outer edge



B3HN6329TSY

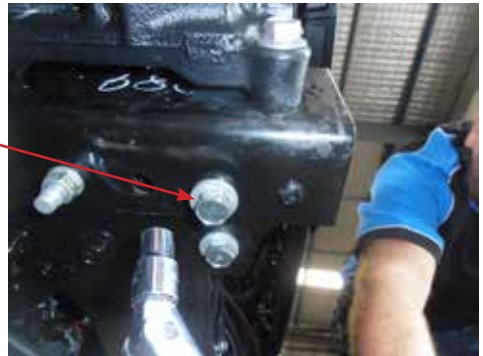
Stage 7

- Bend the infill strips around the lower edge of the light body and fasten using one (1) 3/16 x 3/4" metal thread and nyloc nut each side of the vehicle.
- Drill inner hole below headlight. Fasten using one (1) 3/16 x 3/4" metal thread and nyloc nut.



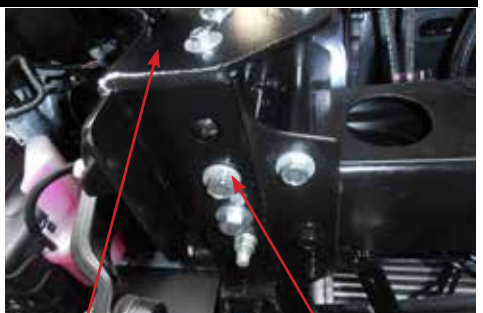
Stage 8

- From under the driver side chassis rail, remove one (1) M14 (long) bolt that travels up through the chassis rail.
- Retain bolt for re-fitting the bullbar mount.



Stage 9

- On the driver side of the vehicle, position the chassis mount onto the chassis rails, level and fasten using the M14 OE long bolt (previously removed), one (1) M14 x 50 x 1.5mm bolt, flat and spring washer (under driver side chassis rail) and three (3) M8 x 30 x 1.25mm bolts, one (1) 3 hole plate, flat and spring washers (on the front face of each chassis mount).



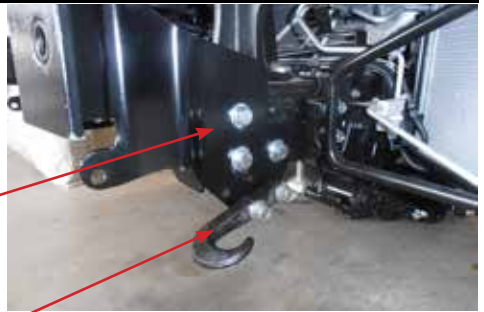
3 hole plate position

M14 OE long bolt

HINO 300 WIDE CAB

Stage 10

- On the passenger side of the vehicle, position the chassis mount onto the chassis rails, level and fasten using three (3) M8 x 30 x 1.25mm bolts, flat and spring washers, one (1) 3 hole plate (on the front ends of each chassis rail), three (3) M14 x 50 x 1.5mm bolts, 4mm washer plates, flat and spring washers (on passenger side of chassis rail).
- Fasten tow hook (facing outwards) using two (2) 9/16" x 2-1/2" UNC bolts, nuts, flat and spring washers.



Stage 11

- Position the three (3) hole plate on the front ends of each chassis rail. Secure with three (3) M8 x 30 x 1.25mm bolts, one (1) 3 hole plate, flat and spring washers on the front face of each chassis mount.



Stage 12

- Remove the plastic covers from drive lights, then remove the screws retaining the drive lights and harness from inside of the original bumper. Retain drive lights and harness for re-fitting.
- Discard the bumper, plastic covers and screws retaining lights.

Remove the six (6)
screws



B3HN6329TSY

Stage 13

(For Halogen lights only, See next step for LED lights)

- Place the angle adaptor brackets onto the drive lights using M6 x 20 x 1.0mm hex bolts, flat washers and wizz nuts.
- Position each drive light into the bullbar and align with tabs welded inside the channel, fasten using two (2) M10 x 25 bolts, flat washers and nyloc nuts.



Stage 14

(For LED lights only)

- With a set of long nose pliers, crimp adjusting bolts hold in wing just to inside of casing and gently remove from casing.
- Remove adjustment bolt from light.
- Using a flat blade screwdriver, gently pry sides of light away from casing and remove from casing.



Stage 15

(For LED lights only)

Please note, light brackets are sided.

- Using correct mount for foglight side, place foglight between tabs and lock in position. Tabs may need to spread or shrink to lock into position on sides of light.
- Attach to rear tab behind fog light using one (1) M5 x 20mm PK screw.



HINO 300 WIDE CAB

Stage 16

- Attach fog light bracket to rear of bullbar using two (2) M10 x 25 bolts, flat washers and nyloc nuts.
- Align light by adjusting at these points when bullbar is fitted to vehicle.
- Tighten all bolts.



Stage 17

- Position the bullbar on the chassis mount centrally and fasten using 9/16" x 2-1/2" UNC hinge bolts, flat washers and nyloc nuts. Tighten hinge bolts until washers touch the hinge mounts firmly, **Do not over tighten.**
- Fit the 3/4" eyebolts and flat washers through the front of the channel and tighten.
- 9/16" x 2-1/2" UNC hinge bolts, flat washers and nyloc nuts.



Stage 18

- Tighten eye bolts.
- Align bullbar with vehicle and tighten all mount bolts. Tighten front (M8) bolts last.
- Remove eye bolts and check bullbar tilt.
- Reconnect fog light wiring connectors and cable tie harness to steel mount.
- Connect parker/indicator connectors, adapters and check the operation of all lights.
- Install towpin into top of bullbar.



B3HN6329TSY

Supplied Product Assemblies

Fig.1 - 1x Towpin Bullbar assembly

Fig.2 - 1x Steel towpin mounting brackets (Fitted to Bar)

Fig.3 - 3 hole plate

Fig.4 - Washer plate (4mm thick)

Fig.5 - infill strip (3 hole) 2014+

Fig.6 - Fog light mounting brackets

Fig.7 - LED fog bracket

Fig.8 - 218mm Towpin



Figure 1 - Bullbar assembly
NOTE: Towpin Bar required

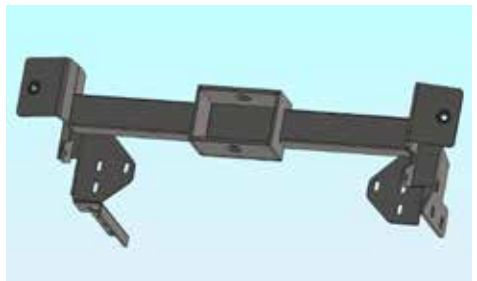


Figure 2 - 1 Steel towpin mounting brackets
(fitted to bar)



Figure 3 - 3 hole plate

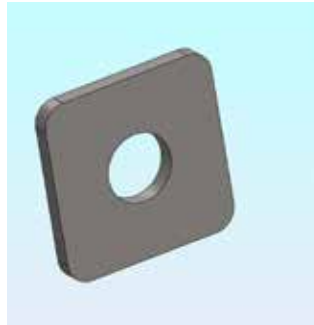


Figure 4 - Washer plate (4mm thick)



Figure 5 - infill strip (3 hole)
2014+



Figure 6 - Fog light mounting
brackets



Figure 7 - LED fog bracket



Fig8 - 218mm Towpin
- In Bolt kit

Fitting Kit

GA03602002

GA10002003

Pre-fitted bolts and Parts

| | |
|---|---|
| 1 - Steel mounting brackets (YB3HN6329SY) | 2 - 9/16" Nyloc Nuts |
| 2 - 3/4 Eye Bolts | 4 - 9/16" Flat Washers |
| 2 - 3/4 flat washers | 1 - Pair of ICLED0104BL Park / Indicator Lights |
| 2 - 9/16" x 2 1/2" Hinge Bolts | 2 - Fog Light surrounds |

Bullbar Fitting Kit

| | |
|--|---|
| 1 - 218mm towpin | 10 - 9/16" Flat washers |
| 1 - Nylon towpin washer | 6 - 9/16" Spring washers |
| 2 - 3 hole plates | 2 - 9/16" nuts |
| 3 - Washer plate 4mm thick | 4 - M14 x 1.5 x 50mm Bolt |
| 4 - 3/16" x 3/4" Pan head metal screws | 2 - M14 x 1.5 nuts |
| 4 - 3/16" Nyloc nuts | 8 - 300mm Cable ties |
| 6 - M8 x 1.25 x 30mm Bolts | 2 - Patch Harnesses (A36 ICH 036A) |
| 6 - M8 Flat washers | 2 - Patch Harness Adapters (36A) |
| 6 - M8 spring washers | 1 - Pair side infill strip (3 hole) 2014+ |
| 2 - 9/16 x 2 1/2" Bolts | 1 - Tilt Cab Warning Sticker |

Fog Light Fitting Kit

| | |
|---------------------------------|-----------------------------------|
| 4 - Fog Light mounting brackets | 4 - M10 x 1.5 x 25mm Bolts |
| 1 - Pair LED foglight mounts | 8 - M10 Flat washers |
| 8 - M6 x 1.0 x 20mm Bolts | 4 - M10 x 1.5 Nyloc Nuts |
| 8 - M6 x 1.0 Whiz lock nuts | 2 - M5 x 20 Pan head metal screws |
| 8 - M6 x 16 flat washes | |

Torque Guide

| Diameter | Thread Pitch | Recommended Assembly Setting | |
|-------------------|----------------------------|---|---------------------------------|
| M6 | 1.0mm | 9.1Nm | 6.8lbf ^t |
| M8 | 1.25mm | 22Nm | 16.3lbf ^t |
| M14 | 2mm | 122Nm | 90lbf ^t |
| 3/16 | No torque setting required | | |
| 3/8 | 16 TPI | 36.6Nm | 27 lbf ^t |
| 9/16 ¹ | 12 | 180.3Nm ¹ | 133 lbf ^t (See note) |
| 3/4 Eye bolt | 10 TPI | Hand tightened firmly only as overtightening will damage nylon washer | |

Notes:

1. 9/16 bolts used to secure bullbar to steel mount require to be tightened only to touch the alloy mount firmly. Overtightening of this bolt will result in damage to the bullbar and possible inability to align bullbar correctly to vehicle.

Finished Product



Non towpin bullbar shown



Non towpin bullbar shown



Non towpin bullbar shown

REPLACES: N/A
REVISED: 26.11.19