



HINO

Australia

GA32002007
(P2HN6360SY)



Fitting Guide

HINO 300 WIDE CAB
HI HORSE POWER 06/20 ON

2 Post Premium Bullbar
VEHICLE FRONTAL PROTECTION SYSTEM (VFPS)
FOR AIR BAG & ADR COMPLIANT VEHICLES

Index

Pages 2-3

Index and Notes

Pages 4-5

Stage 1	Vehicle Preparation
Stage 2	Bumper Removal
Stage 3	Sonar Lens Removal
Stage 4	Sonar Lens Installation
Stage 5	Tow Hook Removal and Reinstallation
Stage 6	Bumper Mount Plate Removal

Pages 6-7

Stage 7	Chassis Preparation
Stage 8	Mounting Bracket Installation
Stage 9	Light Harness Installation
Stage 10	Bullbar Installation
Stage 11	Bullbar Tilt Check and Retaining Bolt Installation
Stage 12	Electrical Checks and Tilt Sticker Installation

Pages 8-9

Supplied Product Assemblies
Fitting Kit
Torque Guide

Pages 10-11

Finished Product

NOTE: These instructions are to be used as a guide for installation of this component to the specified HINO model. Please ensure you check the component is applicability before installation. This work should be done by a qualified installer/technician and all care must be taken to ensure all steps are completed. Failure to do so may risk conformity to HINO component warranty and/or compliance. If you have any issues or concerns with this installation please contact 1300 01 HINO.

Model Code Check

- This product is designed to be installed on the following model codes.
- Please ensure the vehicle you are working on is listed below.
- If not please contact your parts manager before you proceed

No	Model description	Model code
721	WIDE CAB HHP	XJC710 / 720 / 740
920/921	WIDE CAB HPP	XJC710 / 720 / 740

GA32002007

Stage 1

- Park the vehicle on level ground and apply the park brake.
- Check installation hardware and read fitting instructions before commencing.
- Ensure all equipment in cabin is correctly secured or in a position so cab can be tilted.
- Remove steel mounting bracket from bullbar. Retain fasteners for refitment.



Stage 2

- Remove three (3) 10mm head bolts from bumper opening per/side.
- Remove bumper.



Stage 3

- Remove sonar lens from bumper cover, four (4) white clips.



HINO 300 MY20- WIDE CAB HHP

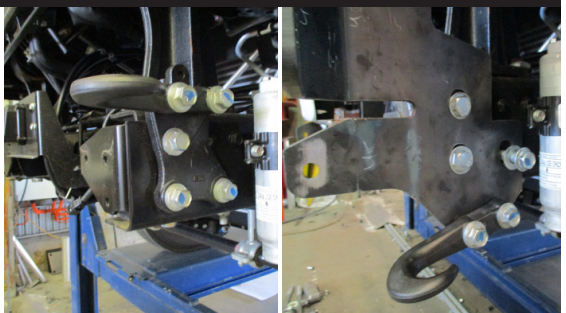
Stage 4

- Measure between the nutserts steel mounting bracket.
- On Sonar lens find lens of lower flange. Measure nutsert distance evenly from centre and 15mm from rear of flange. Double check on steel mount to ensure correct distance between hole markings.
- Drill two 8mm holes in lower flange to fit onto nutserts.
- Relocate lens onto steel mount using two (2) M6 x 25mm black combo screws, spring washers and flat washers.



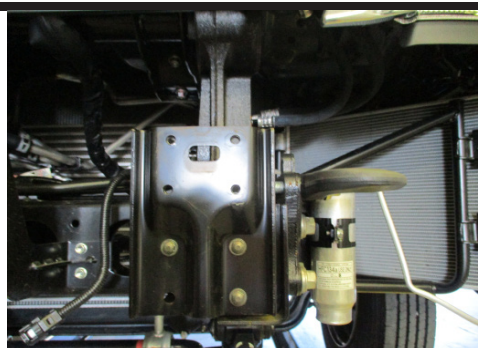
Stage 5

- Remove tow hook and cast bracket from passengers side, five (5) 19mm head bolts.
- Install tow hook to steel mount with M14 X 1.5 X 70 bolts, flat washers and nyloc nuts.



Stage 6

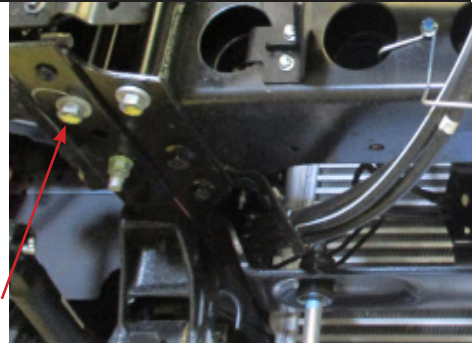
- Remove three (3) 10mm head bolts (per side) from end of chassis rail
- Remove bumper mounting plates.



GA32002007

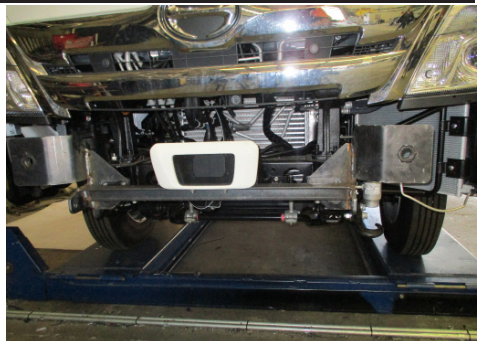
Stage 7

- Remove one 19mm head bolt from underside end of drivers side chassis rail.



Stage 8

- Install steel mounting bracket onto chassis rails using six (6) M8 x 1.25 x 35 bolts, spring washers, flat washers and washer plate into front holes.
- Fit three (3) M14 x 1.5 x 60mm bolts, flat washers spring washers and washer plates in passenger side.
- Fit one (1) M14 x 1.5 x 40mm bolt, spring washer and flat washer and original cab bolt in drivers side.
- Once all bolts are fitted, align mounting bracket vertically on the front of the mount and horizontally to the vehicle. Tighten all bolts.



Stage 9

- Disconnect indicator and parking lights on the vehicle. Remove indicator fitting from light and remove bulb. Refit light fitting without bulb.
- Connect indicator to indicator and parking light harness.

NOTE: indicator in vehicle is not reconnected.

- Connect parking light harness to indicator and parking light harness and other side back to the light connection.

HINO 300 MY20- WIDE CAB HHP

Stage 10

- Place the bullbar onto the chassis mounts and install the M14 x 70 hinge bolts, flat washers and nyloc nuts. Fasten until light pressure only is applied on the alloy mount plates.

CAUTION: Do not over tighten the hinge bolts. Overtightening will damage bullbar and could cause it to become offset to the vehicle.



Stage 11

- Tilt cabin to ensure cabin locks into position and does not hit bullbar.
- Connect wiring to park/indicator. Zip tie wiring harness to the original on the underside of the headlight. Ensure wiring is not tight when bull bar is tilted.
- Return cabin to locked position.
- Lift bull bar and check positioning of sonar guard. Adjust if required.
- Fit locking bolts, flat steel washer and nylon washer. Tighten firmly using wheel nut wrench from tool kit of vehicle.



WARNING: Do not over tighten bolt.

Stage 12

- Check all electrical equipment for correct operation.
- Put cab tilt sticker onto vehicle near cab lock down handle.

NOTE: Two (2) M5 x 12 screws and nyloc nuts have been included for installation of the number plate. Please ensure they are attached to the number plate bracket on the bull bar.

GA32002007

Supplied Product Assemblies

Fig.1 - 1x Bullbar assembly

Fig.2 - 1x Steel mounting brackets (Fitted to Bar)

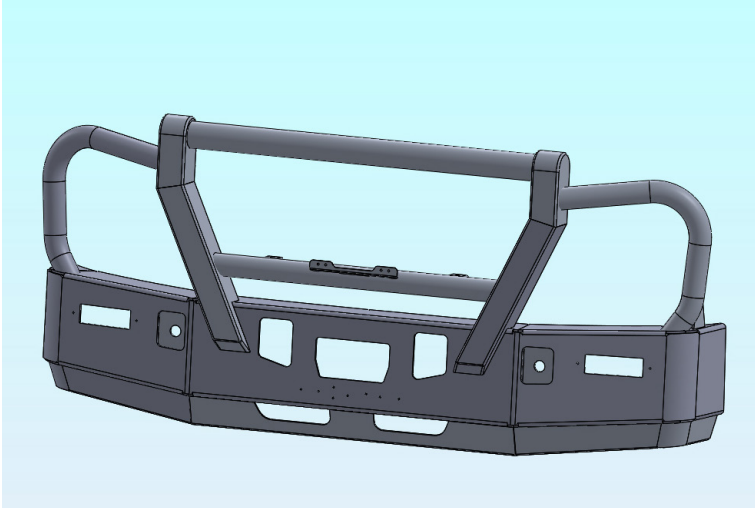


Figure 1 - Bullbar assembly

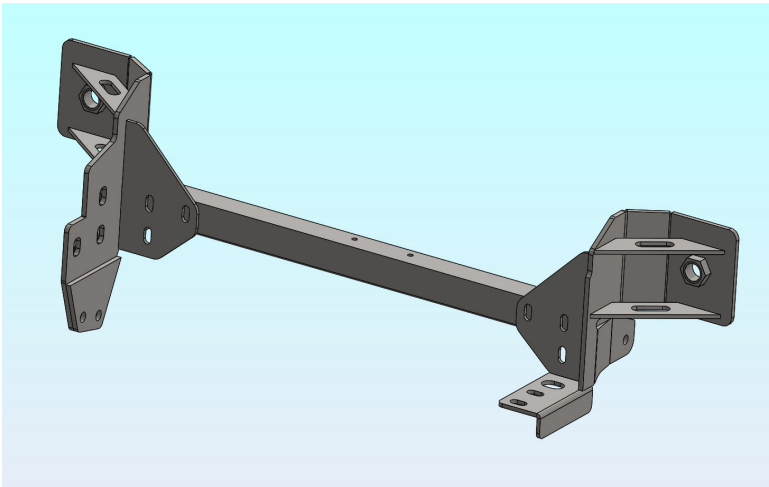


Figure 2 - Steel mounting bracket (fitted to bar)

Fitting Kit

Pre-fitted bolts and Parts

1 - Steel mounting bracket	4 - M6 x 25 Black combo screws
1 - Sonar Guard	4 - M6 flat washers
2 - M27 x 70mm hex bolts ² (used in eye bolt holes)	4 - M6 Nyloc nuts
2 - M27 Flat washers (used in eye bolt holes)	1 - Hino Lettering
2 - M27 Nylon washers (used in eye bolt holes)	8 - 4mm Starlock fasteners (used to attach lettering)
2 - M14 x 1.5 x 70mm hex bolts (used for hinge bolt)	2 - Incandescent park / indicator (IC87270 - 24)
2 - M14 x 1.5 Nyloc nuts (used for hinge bolt)	4 - 3/16 X 3/4 Stainless PK screws
4 - M14 flat washers (used for hinge bolt)	4 - 10-24 stainless nyloc nuts

Fitting Kit

2 - 3 hole triangular washer plates	6 - M8 spring washers
3 - 40 x 40 x 4 (15mm hole) Square flat washer	2 - M6 x 25mm black combo screws
2 - M14 x 1.5 x 70mm bolts (Grade 10.9)	2 - M6 flat washers
3 - M14 x 1.5 x 60mm bolts	2 - M6 spring washers
1 - M14 x 1.5 x 40mm bolt	2 - M5 x 12 stainless PK screws
11 - M14 flat washers	2 - M5 stainless nyloc nuts
4 - M14 spring washers	6 - 300mm zip ties
6 - M14 x 1.5 Nyloc nuts (2 nuts to replace hinge nuts)	2 - Quick Click harness (IC20HI300IPH)
6 - M8 x 35mm bolts	1 - Tilt sticker
6 - 5/16 x 1 x 16 flat washers	

Torque Guide

Diameter	Thread Pitch	Recommended Assembly Setting	
M8	1.25mm	22Nm	16.3lbft
M12	1.75mm	76Nm	57lbft
M14 ¹	1.5mm	122Nm ¹	90lbft ¹
M27 ²	3mm	Hand tightened firmly only as overtightening will damage nylon washer	

Notes:

1. M14 bolts used to secure bullbar to steel mount require to be tightened only to touch the alloy mount firmly. Over-tightening of this bolt will result in damage to the bullbar and possible inability to align bullbar correctly to vehicle.
2. M27 bolts are used as securing bolts for the bullbar. This allows the bullbar to be released from the vehicle using the wheel spanner of the vehicle. Over-tightening of this bolt will damage the nylon washer causing possible vibration rattles to develop.

Finished Product



This Page has intentionally been left blank

REPLACES: 10.11.20

REVISED: 18.05.21

