

GA72102005/ GA72102004  
P4HN6721TSYF/ P4HN6720TSYF



## Fitting Guide

### HINO 700 E13

### 5/21 ON

E13 Mid and Full Protection Bars  
VEHICLE FRONTAL PROTECTION SYSTEM (VFPS)  
FOR AIR BAG & ADR COMPLIANT VEHICLES

# Index

---

## Pages 2-3

Index and Notes

## Pages 4-5

Stage 1 Vehicle Preparation  
Stage 2 Chrome Insert Removal  
Stage 3 Lower Grille Trim Removal  
Stage 4 Grille Removal  
Stage 5 Bumper Door End Cover Removal  
Stage 6 Tilt Cabin

## Pages 6-7

Stage 7 Bumper Plastics Removal  
Stage 8 Grille Backing Removal  
Stage 9 Remove Headlights  
Stage 10 P/S Chassis Preparation  
Stage 11 D/S Chassis Preparation  
Stage 12 Install Steel Mounts

## Pages 8-9

Stage 13 Relocate Wiring Loom  
Stage 14 Install Towbox Channel  
Stage 15 Install Headlights  
Stage 16 Corner Plastics Trim and Refit  
Stage 17 Corner Plastics Trim and Refit (Cont'd)

## Pages 10-11

Stage 18 Tilt Cabin Closed  
Stage 19 Install Protection Bar  
Stage 20 Install Bumper Stays  
Stage 21 Relocate Headlight Wiring  
Stage 22 Tilt Stickers  
Stage 23 Finishing Checks

## Pages 12-13

### Supplied Product Assemblies

Fitting Kit

## Pages 14-15

Torque Guide  
Finished Product

**NOTE:** These instructions are to be used as a guide for installation of this component to the specified HINO model. Please ensure you check the component is applicable before installation. This work should be done by a qualified installer/technician and all care must be taken to ensure all steps are completed. Failure to do so may risk conformity to HINO component warranty and/or compliance. If you have any issues or concerns with this installation please contact 1300 01 HINO.



# GA72102005/ GA72102004

---

## Stage 1

- Test drive vehicle to ensure all driver assists are correctly working and to gauge effectiveness. Park on a flat level surface.
- Apply parking brake and lift bonnet.
- Unwrap Protection bar and disconnect mounts. Discard bolts.
- Ensure these instructions are left with the vehicle owner and/or operator.
- As headlights are moved, check adjustment of headlights.



## Stage 2

- Pull out on outer chrome mould to release clips from plastic section and remove molding (per/side).



## Stage 3

- Remove four (4) 10mm head bolts from under the underside of the lower bumper panel.
- Gently pull on side of panel to remove from push clips across top.
- Remove lower grille panel.



# E13 Mid and Full Protection Bars

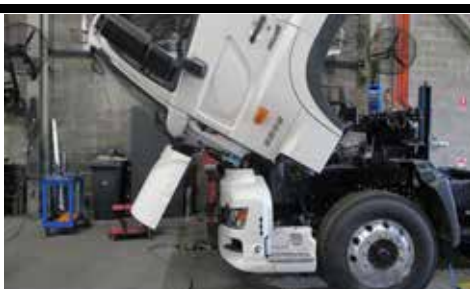
## Stage 4

- Remove six (6) 10mm head bolts from grille and pull out at bottom to release clips.
- Pull down to remove grille.



## Stage 5

- Ensure no loose objects are in the cab.
- Open bonnet of vehicle.
- Tilt cab as per instructions specified in owners manual.



## Stage 6

- Pull out on top of cover panel in front of step to release clip and lift up to remove.



# GA72102005/ GA72102004

## Stage 7

- Remove three (3) 10mm head bolts and four (4) white locking tabs from under side of bumper.
- Remove two (2) black screws from step plate and remove step.
- Remove two (2) 10mm head bolts from behind top of headlight mount.
- Remove two (2) 10mm head bolts from behind outside of headlight.
- Lift up on corner panel and remove.
- Repeat these steps on other side.



## Stage 8

- Remove three (3) 17mm head bolts and two (2) 12mm head bolts from outer grille backing (per/side).
- Unclip headlight wiring from lower grille base and remove.
- Refit original bolts into original holes. Tighten all bolts.



## Stage 9

- Remove headlights by removing three (3) 10mm head nuts and one (1) 10mm head bolt from headlight mount (per/side).
- Disconnect wiring and remove light.

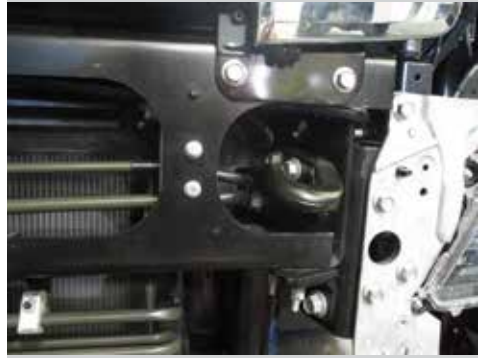


# E13 Mid and Full Protection Bars

## Stage 10

- Remove two (2) 19mm head bolts from tow hook from passenger side chassis rail.
- Remove and discard tow hook.
- Remove two (2) 22mm head bolts from chassis rail under tow hook.

NOTE: Lower bolt can be loosened if required.



## Stage 11

- On drivers side chassis rail remove wiring loom clip from locater for easy access.
- Bend wiring plug locater bracket upwards for easy fitment.
- Remove four (4) 22mm head bolts.



## Stage 12

- Install steel mounts onto chassis rails using four (4) M16 x 50mm bolts, flat washers and nyloc nuts (per side).
- Align, centralise and tighten all bolts.



# GA72102005/ GA72102004

## Stage 13

- Relocate wiring loom to front of support rail and zip tie into position.



## Stage 14

- Fit center towbox steel mount onto side mounts using six (6) M12 x 40 mm bolts, flat washers and Nyloc nuts.
- Align and tighten all bolts.



## Stage 15

- Relocate headlights into protection bar using two (2) M6 x 30 bolts, four (4) alloy spacers, flat washers and nyloc nuts in inside holes in headlight mount.

Note: Alloy spacers with tail to top holes

- Fix outside holes in headlight mount with two (2) M6 x 25 bolts, flat washers and nyloc nuts.
- Centralize lights into headlight openings. Tighten all bolts.

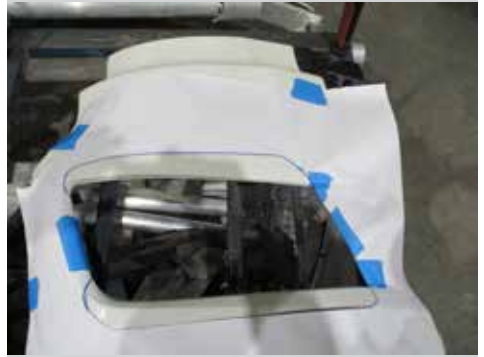




# E13 Mid and Full Protection Bars

## Stage 16

- Mask Corner panels to avoid damage.
- Using cut line information, mark out corner panels from template in instructions.
- Cut with jigsaw or similar. Clean edges so they are neat as this is the completed edge.
- Refit to vehicle using original equipment fasteners.



## Stage 17

- Using steel mount as a guide, trim bumper plastics to fit around steel mount.



# GA72102005/ GA72102004

## Stage 18

- Tilt cabin back to driving position.
- Close bonnet



## Stage 19

- Install protection bar onto steel mount using two (2) M16 X 70 hinge bolts in lower holes.
- Temporarily fit two (2) 7/8 x 2 1/2 inch protection bar retention bolts in towbox hole.



## Stage 20

- Remove protection bar retention bolts and carefully tilt protection bar to attach hinge stays.

Caution: Hold the protection bar. If protection bar is released, it will rotate all the way to the ground causing damage to both the protection bar and the vehicle.

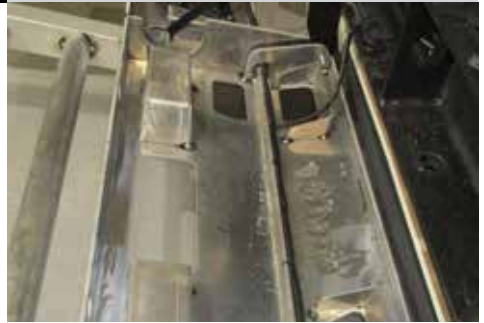
- Attach hinge stay to alloy hinge stay mount in protection bar using one (1) M10 x 50 bolt, flat washer and nyloc nut (per/side).



# E13 Mid and Full Protection Bars

## Stage 21

- Relocate headlight wiring loom into the back of protection bar and secure to underside of channel leg using zip ties (supplied).
- Connect headlights and headlight harness back to vehicle behind tow pin channel.



## Stage 22

- Place one tilt cab sticker so it is clearly visible on inside of drivers door.
- Place one tilt cab sticker on passenger front door pillar near tilt door release handle under bonnet.



## Stage 23

- Tilt Protection bar into closed position. Install and tighten 7/8 retention bolts. Do not overtighten as it will damage the nylon anti rattle washers.
- Install tow pins with nylon washers into top holes in protection bar channel.
- Check all electrical equipment for correct operation.
- Check headlight adjustment. Re-adjust if required.
- Check radar calibration to ensure correct operation.

# GA72102005/ GA72102004

---

## Supplied Product Assemblies

Fig.1 - 1x Bullbar assembly

Fig.2 - 1x Pair steel mounting brackets (Fitted to Bar)

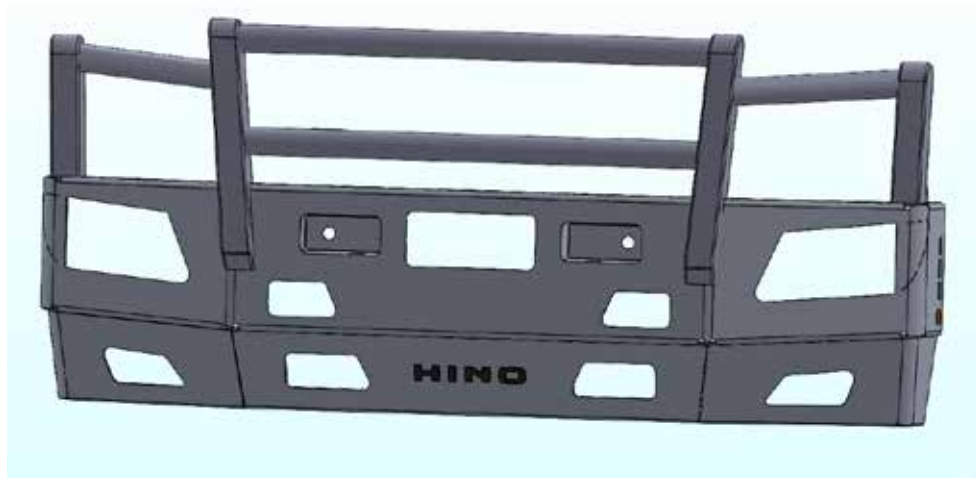


Figure 1 - Bullbar assembly

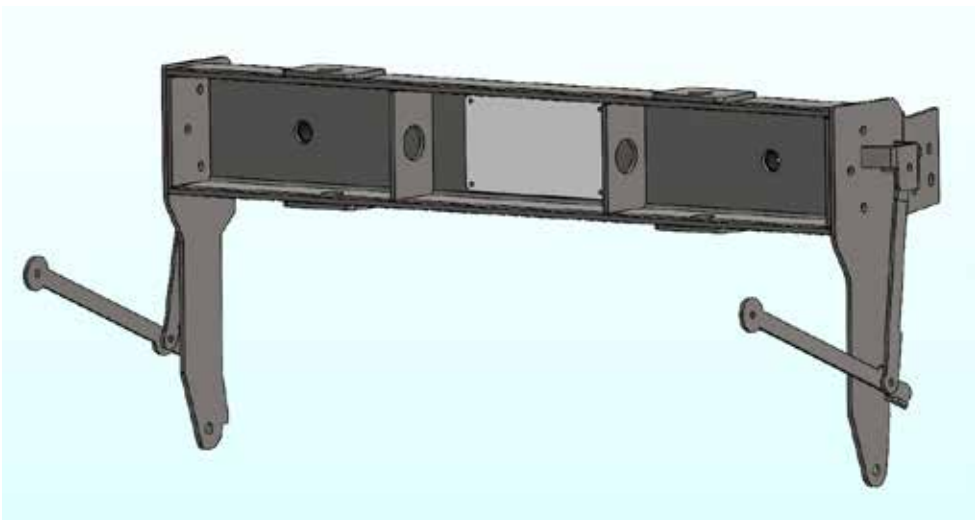


Figure 2 - 1 Pair Steel mounting brackets including hinge stays (fitted to bar)

# Fitting Kit

## Pre-fitted bolts and Parts

1 - Pair Steel mounting brackets	2 - M16 x 2 Nyloc nuts (used for hinge bolt)
1 - Towpin center mount	4 - M12 x 1.75 x 40mm bolts
1 - Pair hinge stay assembly	8 - M12 Flat washers
2 - Spacer tube 10NB x 30mm (use on steel mount side of hinge stay)	4 - M12 Nyloc Nuts
2 - Reflector round 42mm	2 - M10 x 1.5 x 70mm bolts
1 - Perspex sonar cover (fitted to mount)	2 - M10 x 1.5 x 50mm bolts
2 - Black Plastic steps	2 - M10 x 1.5 x 35mm bolts
1 - Hino Lettering	14 - M10 Flat washers
2 - 7/8 x 2 1/2 hex bolts (used in bar retention holes)	6 - M10 Nyloc Nuts
2 - M24 Flat washers (used in bar retention holes)	8 - M6 Black Combo Bolts
2 - M24 Nylon washers (used in bar retention holes)	8 - M6 flat washers (used to attach sonar cover to mount and steps)
2 - M16 x 2.0 x 70mm hex bolts (used for hinge bolt)	8 - M6 nyloc nuts (used to attach sonar cover to mount and steps)
4 - M16 flat washers (used for hinge bolt)	8 - 4mm Starlock fasteners (used to attach lettering)

## Fitting Kit

2 - 280mm towpins	6 - M12 x 1.75 Nyloc nuts
2 - M33 x 60mm x 5 Nylon Washer	2 - M10 x 1.5 x 50mm bolts
4 - 3mm Alloy washers	4 - M10 Flat washers
4 - 3mm Alloy washers with tail	2 - M10 Nyloc Nuts
2 - M16 x 2 x 70mm bolt	4 - M6 x 30mm bolt
8 - M16 x 2 x 50mm bolts	4 - M6 x 25mm bolt
20 - M16 flat washers	16 - M6 flat washers
10 - M16 x 2 Nyloc nuts	8 - nyloc nuts
6 - M12 x 1.75 x 40mm bolt	2 - Tilt sticker
12 - M12 flat washer	10 - 300mm zip ties

# Torque Guide

---

## Torque Guide

Diameter	Thread Pitch	Recommended Assembly Setting	
M6	1.0mm	9.1Nm	6.8lbft
M10	1.5mm	44Nm	33lbft
M12	1.25mm	76Nm	57lbft
M16 <sup>1</sup>	2mm	190Nm <sup>1</sup>	140lbft <sup>1</sup>
7/8	9 TPI	Hand tightened firmly only as overtightening will damage nylon washer	

Notes:

1. M16 bolts used to secure bullbar to steel mount require to be tightened only to touch the alloy mount firmly. Overtightening of this bolt will result in damage to the bullbar and possible inability to align bullbar correctly to vehicle.

## Finished Product

---



E13 Full Protection Bar

# Finished Product

---



E13 Mid Profile Bar

REPLACES: N/A  
REVISED: 03.09.21

