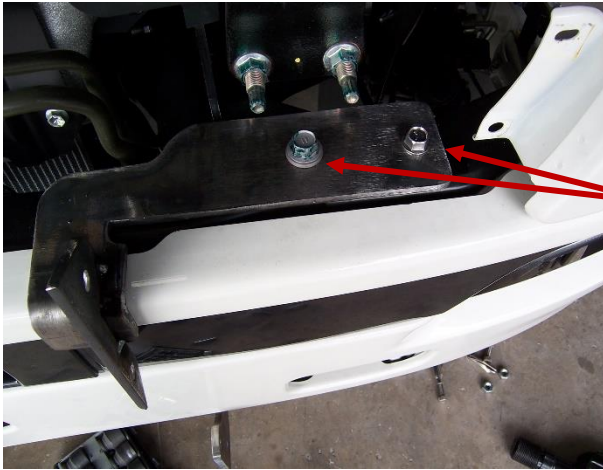


GA70012001 Fitting Instruction

700 SERIES E5 2011 -



REMOVE GREY SECTION OF GRILL AND
REMOVE BOLTS FROM HEADLIGHT FRAMES

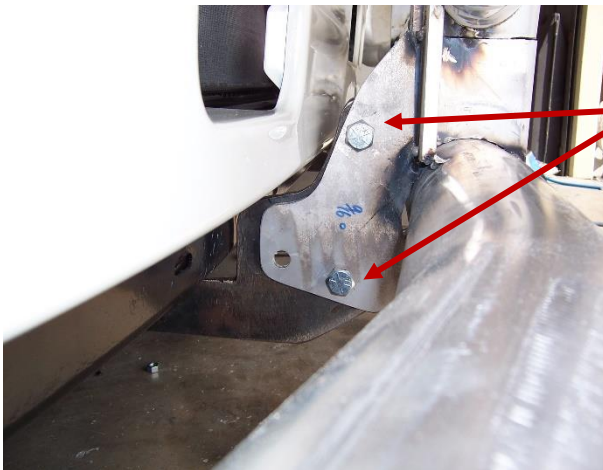
FIT MOUNT AS PER PHOTO

USE M12 AND M14 BOLTS SUPPLIED

TIGHTEN ALL BOLTS



REFIT GRILL



FIT STEEL MOUNT TO REAR OF FUP

USE 4 1/2" x 5/8" BOLTS SUPPLIED

TIGHTEN ALL BOLTS



FIT NUDGE BAR TO TRUCK MOUNT

USE TEN (10) x 1/2" x 9/16" BOLTS SUPPLIED

GA70012001 Fitting Instruction

700 SERIES E5 2011 -



ALIGN NUDGE BAR AND TIGHTEN ALL BOLTS



GA70012001 Fitting Instruction
700 SERIES E5 2011 -



FITTING KIT

P/N GA70012001

P/N 08HN9704SYF

Qty	Length	Diameter	Thread Pitch	Description
10	1 ½"	9/16"		Bolt Grade 8H/T
10		9/16"		Nyloc Nut
22		9/16"		H/D Flat Washer
4	4 ½"	5/8"		Bolt Grade 8H/T
4		5/8"		Nyloc Nut
8	5/8"			H/D Flat Washer
2	30mm	12mm	1.25mm	Metric Bolt Grade 8H/T
2		½"		H/D Flat Washer
2	40mm	14mm	1.50mm	Metric Bolt Grade 8H/T
1	Steel Bullbar Mount			
1	Fitting Instructions			
SEALED IN CLEAR BAG, BOXED AND TAPED TO BACK OF BAR				

GA70012001 Fitting Instruction
700 SERIES E5 2011 -



**GA70012001 Fitting Instruction
700 SERIES E5 2011 -**



**DESPATCH CHECKLIST
08HN9704SYF
HINO 700 SERIESE5 2011 -**

Work Order No:	
Finish:	
Transport:	
Due Date:	

BK	_____	1	Steel Mounting Brackets (4 Pieces) – Boxed with Bolt Kit
OC	_____	1	Bolt Kit
WR	_____	1	Bolt Kit – Boxed and Taped to Back of Bar

See other side of this page for photos of all mounts



**IS THIS PRODUCT “THE BEST IT CAN BE”?
IF NO FIX BEFORE CONTINUING**

Wrapper's Checker's
Initials Initials

ALL PARTS CHECKED AND COMPLETED BY:

NUTS AND BOLTS: _____ DATE: ___/___/___

ORDER CONTROL: _____ DATE: ___/___/___

FINAL WRAP CHECK: _____ DATE: ___/___/___

**GA70012001 Fitting Instruction
700 SERIES E5 2011 -**



**STEEL MOUNT
(TOP VIEW)**



**STEEL MOUNT
(SIDE VIEW)**



Wrapper's Initials

Checker's Initials