

GA30002001 Fitting Instruction

300 SERIES STANDARD CAB MY07-MY10 DELUXE 3 BULLBAR



Step 1.

- Remove front bumper by removing the six (6) 8mm bolts in the front air vent holes.
- Discard bolts.



Step 2.

- Remove two (2) 10mm bolts from drivers side.



Step 3.

- Remove steel mounting bracket from bullbar.
- Attach steel mounting bracket using six (6) M8 x 25mm bolts and washers to front of chassis as shown.

NOTE – LEAVE BOLTS LOOSE UNTIL FINAL ADJUSTMENT



Step 4.



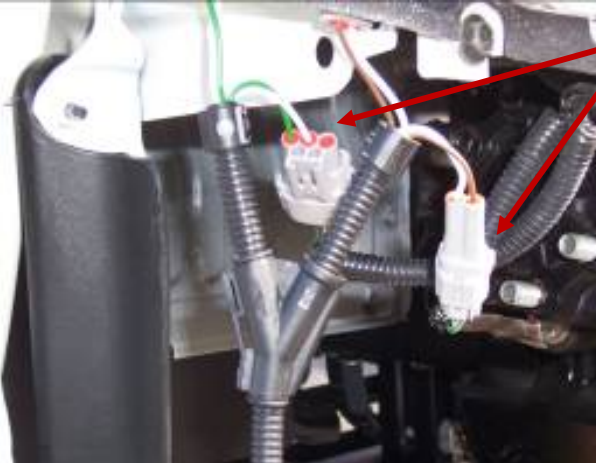
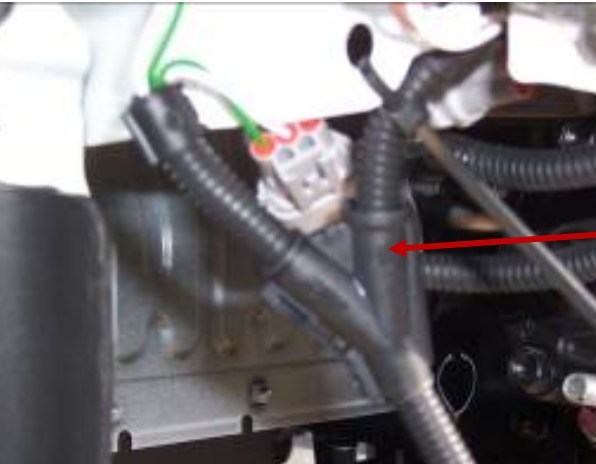
- Attach mount to drivers' side using two (2) M10 x 35mm bolts and flat washers.

NOTE – LEAVE BOLTS LOOSE UNTIL FINAL ADJUSTMENT

GA30002001 Fitting Instruction

300 SERIES STANDARD CAB MY07-MY10 DELUXE 3 BULLBAR



 A photograph showing the passenger side of a vehicle's front end. A black steel mount is being attached to the body. Two red arrows point to the top and bottom mounting holes on the steel mount.	<p>Step 5.</p> <ul style="list-style-type: none">• Attach passenger side steel mount with one(1) 3/8 x 1 1/2 bolt, nyloc nut and two (2) flat washers for top hole.• For bottom holes use 1/2 x 1 1/2 bolt, nyloc nut and 2 flat washers. <p>NOTE – LEAVE BOLTS LOOSE UNTIL FINAL ADJUSTMENT</p>
 A photograph showing the interior of the vehicle's front end, focusing on the wiring harness. Two red arrows point to white plastic harness plugs that are being disconnected from indicator and parker lamps.	<p>Step 6.</p> <ul style="list-style-type: none">• Disconnect harness plugs from indicator lamp and parker lamp as shown.
 A photograph showing the wiring harness being connected to the original harness. Two red arrows point to the connection points where the new harness is being integrated into the existing system.	<p>Step 7.</p> <ul style="list-style-type: none">• Connect wiring harness supplied to both lamps then connect the original harness to the supplied harness as shown.
 A photograph showing the wiring harness being secured with a cable tie. A red arrow points to the cable tie being used to secure the harness to a hole in the body.	<p>Step 8.</p> <ul style="list-style-type: none">• Cable tie harness to hole in body so plugs do not hang low as showing in photo.• Allow enough cable for tilting of bullbar and cab. <p>NOTE – DRIVER AND PASSENGER SIDE ARE THE SAME</p>

GA30002001 Fitting Instruction

300 SERIES STANDARD CAB MY07-MY10 DELUXE 3 BULLBAR



Step 9.

- Attach bullbar to mount using two (2) eyebolts and washers previously removed.

NOTE – LEAVE BOLTS LOOSE UNTIL FINAL ADJUSTMENT



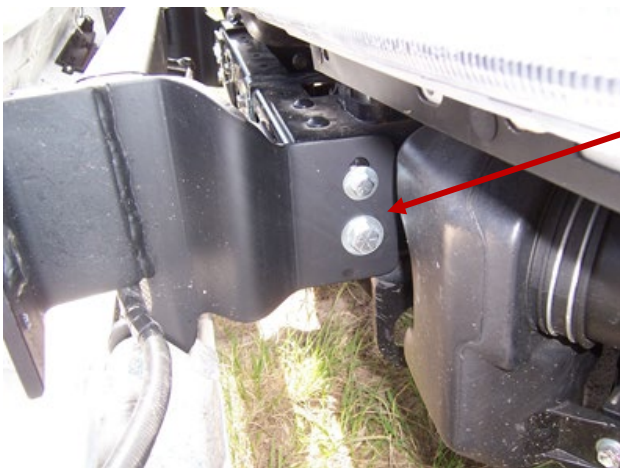
Step 10.

- Locate pivot points and fit two (2) 9/16 x 2 1/2 bolts, two (2) nyloc nuts and four (4) flat washers.
- Tighten nyloc nuts enough to engage the nyloc and still allow the bullbar to pivot on the bolts.



Step 11.

- Tighten front eyebolts and align the bullbar parallel to front of cabin and check height at either side.



Step 12.

- First tighten side bolts of mounts.
- Check bullbar alignment to vehicle again.
- Once all aligned and both side bolts are tightened then proceed to tighten front M8 bolts.

GA30002001 Fitting Instruction

300 SERIES STANDARD CAB MY07-MY10 DELUXE 3 BULLBAR



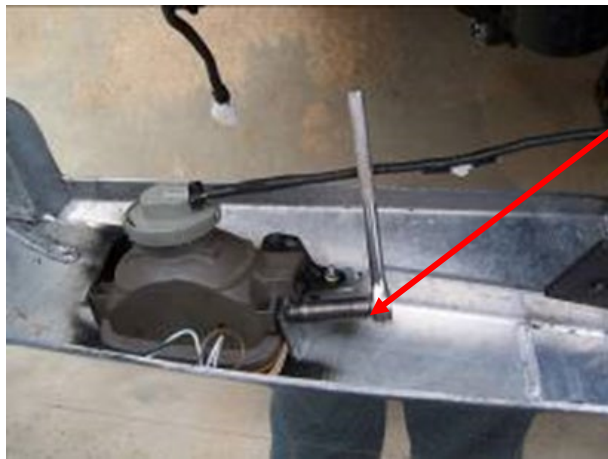
Step 13.

- Remove eyebolts and lower bullbar.
- Connect wiring harness to indicator / park lamps.



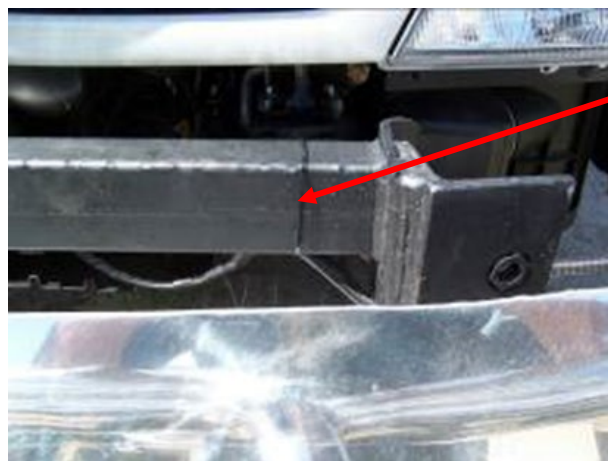
Step 14.

- Locate light with original 6mm screw.
- After removing plastic clip and plastic sleeve in light housing, refit with M6 x 16mm bolt, washer and 6mm whiz nut – Slide nut into housing.



Step 15.

- Locate adjusting arm with M6 x 16mm bolt, washer and whiz nut.



Step 16.

- Use cable ties to secure harness to mount

GA30002001 Fitting Instruction

300 SERIES STANDARD CAB MY07-MY10 DELUXE 3 BULLBAR



Step 17.

- Raise bullbar and lock into position.
- Check cabin and bullbar lamp function.



Step 18.

- Place Tilt bullbar warning label on passenger side new cab lifting handle.

GA30002001 Fitting Instruction
300 SERIES STANDARD CAB MY07-MY10 DELUXE 3 BULLBAR
FITTING KIT



P/N GA30002001

P/N B3HN6301SY

Qty	Length	Diameter	Thread Pitch	Description
6	25mm	8mm		Metric Bolt Grade 8H/T
6		8mm		Flat Washer
1	1 ½"	½"	UNC	Bolt Grade 8H/T
1		½"	UNC	Nyloc Nut
2		½"		Flat Washer
1	1 ½	3/8	UNC	Bolt Grade 8H/T
1		3/8	UNC	Nyloc Nut
2	40mm	10mm	1.25	Bolt
4		10mm		Flat Washer
FOG LIGHT FITTING KIT				
4	16mm	6mm		Metric Bolt
4		6mm		Whiz Nut
4		6mm		Flat Washer
2				Cable Ties
PLACE IN SMALL BAG WITH MAIN BOLT KIT				
1	Fitting Instructions			
1	Tilt Cab Warning Sticker			
2	Indicator Wiring Harness			P/N ICHDUTRO300
SEALED IN CLEAR BAG AND TAPED TO STEEL MOUNT				

ATTACHED TO BULLBAR					
2		¾"	UNC	Eyebolt Grade 8H/T	P/N ICEYEBOLT
2		¾"		Flat Washer	
2	2 ½"	9/16"	UNC	Bolt Grade 8H/T	
2		9/16"	UNC	Nyloc Nut	
4		9/16"		Flat Washer	
ADDITIONS					
2	LED Indicator/Parker Lights (95202)			P/N ICLED33INDPRK	
1	Steel Bullbar Mount				

GA30002001 Fitting Instruction
300 SERIES STANDARD CAB MY07-MY10 DELUXE 3 BULLBAR



DESPATCH CHECKLIST
B3HN6301SY
HINO DUTRO STANDARD CAB 2001-2006

Work Order No:	
Finish:	
Transport:	
Due Date:	

OC	_____	1	Steel Mounting Bracket
OC	_____	2	3" Overrides (CA01 Plastic)
OC	_____	2	Hino Badges
WR	_____	2	Eyebolts (³ / ₄ " UNC ZP) and Washers – Fitted To Bar
WR	_____	2	2 1/2" x ⁹ / ₁₆ " UNC Bolt Grade 8H/T – Fitted To Bar
WR	_____	2	⁹ / ₁₆ " Nyloc Nut – Fitted To Bar
WR	_____	4	⁹ / ₁₆ " Flat Washer – Fitted To Bar
WR	_____	2	LED Parker Lights (ICLED33INDPRK-95202CUST) – Fitted To Bar
WR	_____	1	Bolt Kit – Taped to Mount

See other side of this page for photos of all mounts



IS THIS PRODUCT "THE BEST IT CAN BE"?
IF NO FIX BEFORE CONTINUING

 Wrapper's / Checker's
 Initials Initials

ALL PARTS CHECKED AND COMPLETED BY:

NUTS AND BOLTS: _____ DATE: ____/____/____

ORDER CONTROL: _____ DATE: ____/____/____

FINAL WRAP CHECK: _____ DATE: ____/____/____

GA30002001 Fitting Instruction
300 SERIES STANDARD CAB MY07-MY10 DELUXE 3 BULLBAR



STEEL MOUNT
(TOP VIEW)



STEEL MOUNT
(SIDE VIEW)



Wrapper's Initials

Checker's Initials