

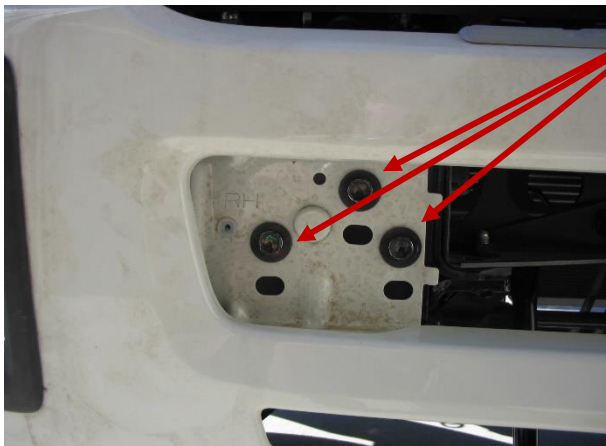
# 92956465TP Fitting Instruction

## FTS FH 4x4 TP 2008 –

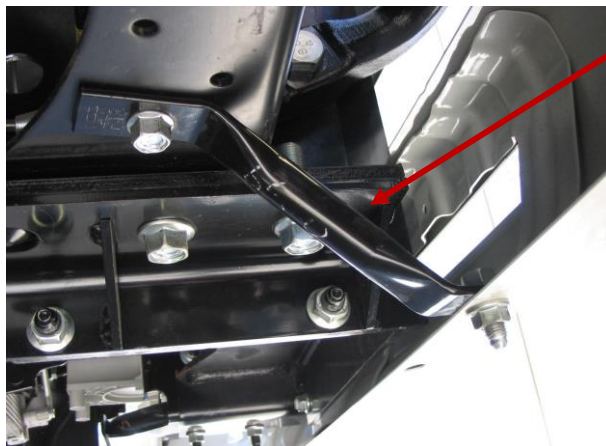
**ISUZU**  
**TRUCKS**



REMOVE BUMPER BAR  
REMOVE PLASTIC COVER  
DRIVERS SIDE SHOWN



REMOVE BUMPER BOLTS, THREE (3) PER  
SIDE  
DISCARD BOLTS



REMOVE BUMPER STAYS, ONE (1) PER SIDE

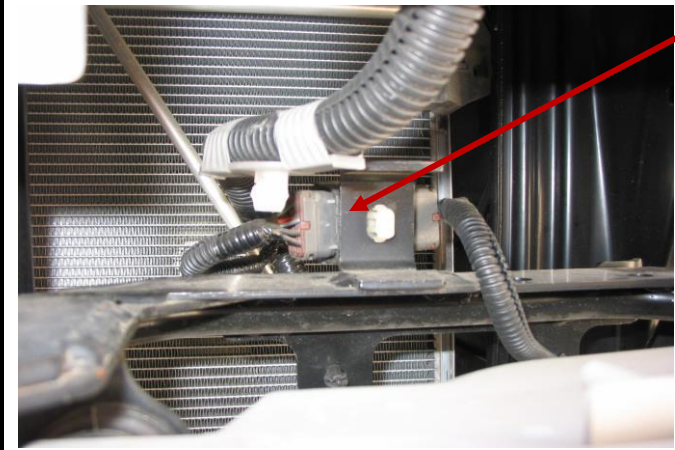
**92956465TP Fitting Instruction**  
**FTS FH 4x4 TP 2008 –**



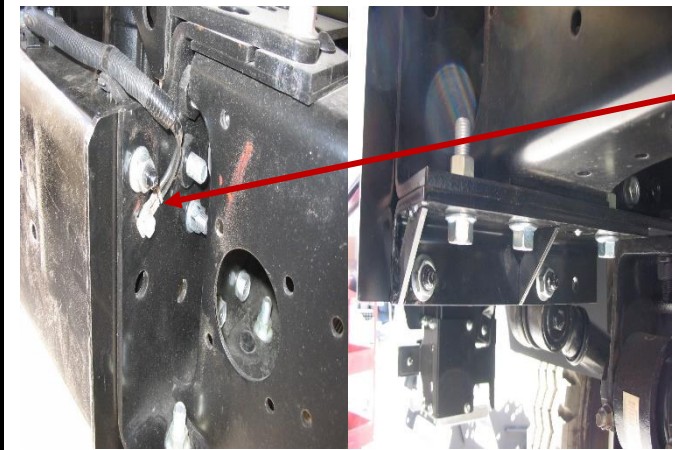
REMOVE NUT, ONE (1) PER SIDE  
PASSENGER SIDE SHOWN



BUMPER REMOVED



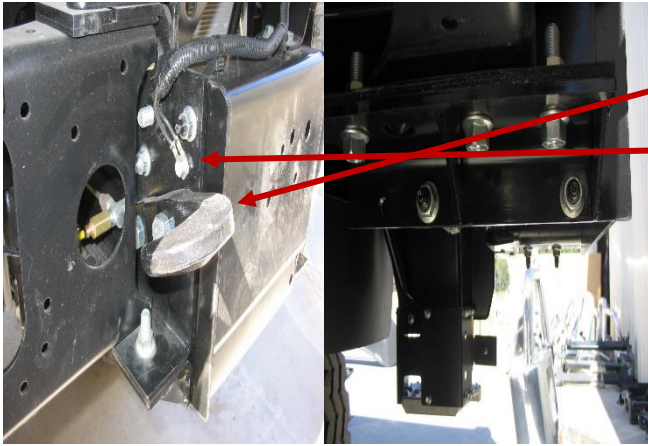
UNPLUG HEADLAMP WIRING FROM  
CONNECTOR AND HEADLAMP MOUNTING  
BRACKET



REMOVE HEADLAMP BRACKET  
REMOVE EARTH WIRE  
DRIVER SIDE SHOWN

# 92956465TP Fitting Instruction

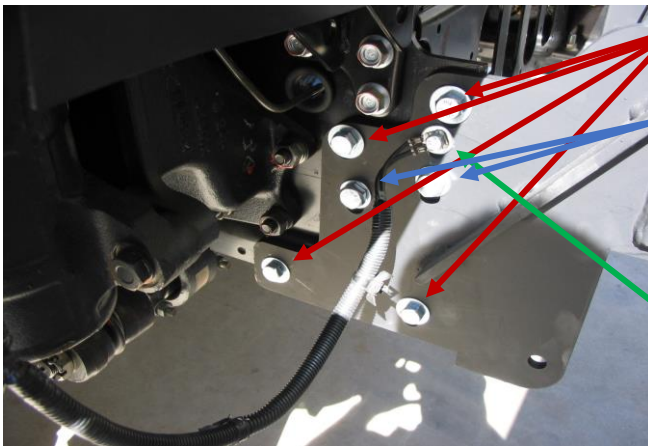
## FTS FH 4x4 TP 2008 –



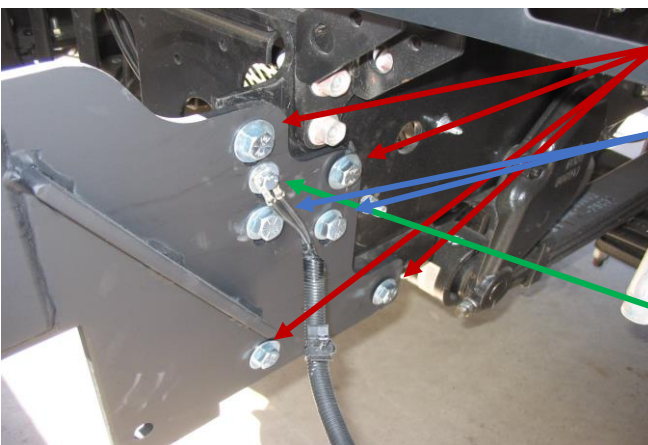
- REMOVE HEADLAMP MOUNTING BRACKET
- REMOVE TOW HOOK
- REMOVE EARTH WIRE



- HEADLAMP REMOVED
- PASSENGER SIDE SHOWN



- INSTALL FOUR (4) 1 1/2" x 1/2" BOLTS, WASHERS (2 PER BOLT) AND NYLOC NUTS
- INSTALL TWO (2) 2" x 9/16" BOLTS, WASHERS (2 PER BOLT) AND NYLOC NUTS
- TIGHTEN BOLTS AND NUTS ENOUGH TO ALLOW FINAL ADJUSTMENT LATER
- REFIT EARTH WIRE USING ONE (1) M8 x 25mm BOLT AND FLAT WASHER



- INSTALL FOUR (4) 1 1/2" x 1/2" BOLTS, WASHERS (2 PER BOLT) AND NYLOC NUTS
- INSTALL TWO (2) 2" x 9/16" BOLTS, WASHERS (2 PER BOLT) AND NYLOC NUTS
- TIGHTEN BOLTS AND NUTS ENOUGH TO ALLOW FINAL ADJUSTMENT LATER
- REFIT EARTH WIRE USING ONE (1) M8 x 25mm BOLT AND FLAT WASHER



# 92956465TP Fitting Instruction

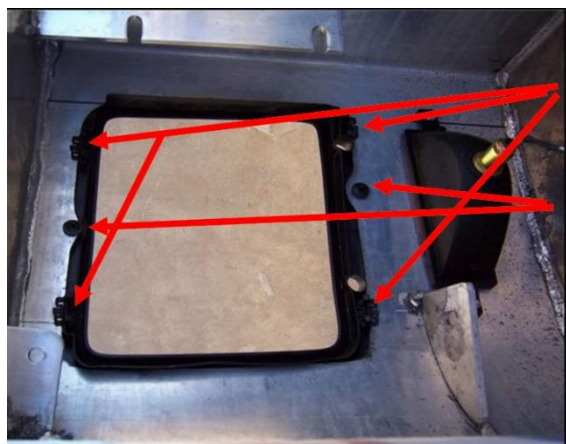
## FTS FH 4x4 TP 2008 –

**ISUZU**  
**TRUCKS**



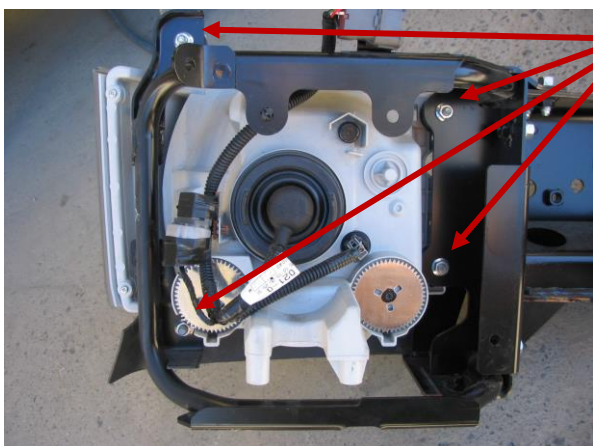
REMOVE HEADLAMP SURROUND FROM BUMPER BAR

FOUR CLIPS



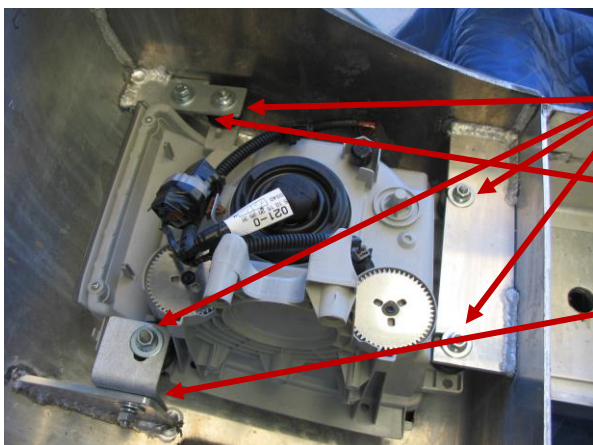
INSTALL HEADLAMP SURROUND INTO BULLBAR USING ORIGINAL FOUR (4) CLIPS

USE ROUND SPRING CLIPS AND PUSH INTO LOCATING PINS, TWO (2) PER HEADLAMP SURROUND



REMOVE HEADLAMP FROM BRACKET

RETAIN NUTS



INSTALL HEADLAMP INTO BULLBAR

USE ORIGINAL FOUR (4) NUTS AND  $\frac{5}{16}$ " FLAT WASHER

USE NEW FLAT BRACKET AND ONE (1) M8 x 25mm BOLT, TWO (2) FLAT WASHERS, ONE (1) SPRING WASHER AND NUT

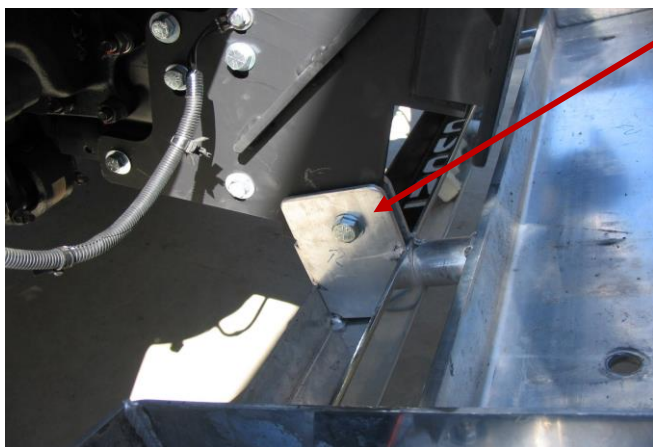
USE NEW ANGLE BRACKET AND ONE (1) M8 x 25mm BOLT, TWO (2) FLAT WASHERS, ONE (1) SPRING WASHER AND NUT

PASSENGER SIDE SHOWN

# 92956465TP Fitting Instruction

## FTS FH 4x4 TP 2008 –

**ISUZU**  
**TRUCKS**



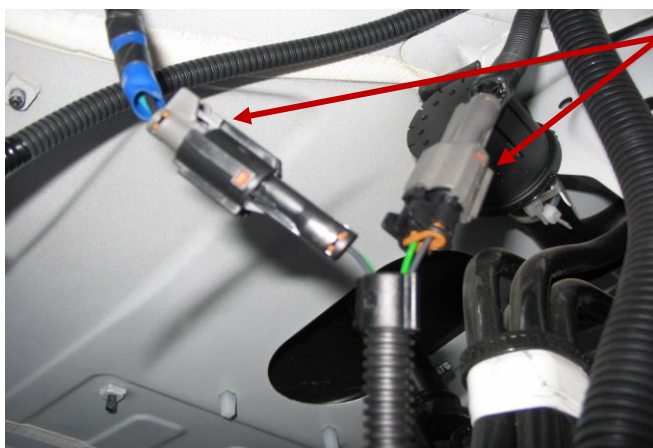
FIT BULLBAR ONTO MOUNT USING TWO (2) 2 X 5/8" BOLTS, WASHERS AND NYLOC NUT

TIGHTEN NUTS TO ENGAGE THREAD INTO NYLOC AS TO ALLOY BULLBAR PIVOT

DRIVER SIDE SHOWN



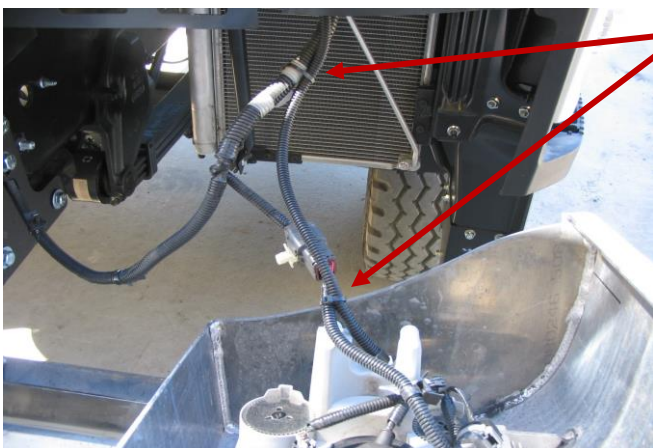
REFIT ORIGINAL TOW HOOK USING ORIGINAL BOLTS, WASHERS AND NUTS



UNPLUG BODY MOUNTED INDICATOR AND PLUG BULLBAR MOUNTED INDICATOR HARNESS AS SHOWN

PLUG IN THE OTHER HARNESS END INTO THE LAMP THAT IS FITTED IN THE BULLBAR

TO BULLBAR LAMP



CABLE TIE INDICATOR HARNESS TO HEADLAMP HARNESS



# 92956465TP Fitting Instruction

## FTS FH 4x4 TP 2008 –



RAISE AND SECURE BULLBAR

LOCK BULLBAR IN PLACE USING TWO EYEBOLTS SUPPLIED

ALIGN BULLBAR TO VEHICLE ENSURING BULLBAR GAPS ARE EQUAL

TORQUE ALL FASTENERS

**(NOTE NON-TOWPIN BULLBAR SHOWN)**

LOCATION	SIZE	TORQUE
BULLBAR MOUNT	1/2"	80Nm
BULLBAR MOUNT	9/16"	140Nm



USE A 1/8" DRILL BIT TO DRILL A HOLE INTO THE BULLBAR

USING BLACK SELF-TAPPING SCREW, SCREW IT INTO THE BULLBAR TO RETAIN HEADLAMP SURROUND

ONE (1) PER HEADLAMP

DRIVER SIDE SHOWN



FIT TILT CAB WARNING LABEL TO DRIVERS SIDE DOOR AS SHOWN



FIT TILT CAB WARNING LABEL TO BACK OF CAB NEAR TILT LEVER

**92956465TP Fitting Instruction**  
**FTS FH 4x4 TP 2008 –**



**FITTING KIT**

**P/N 92956465TP**

**P/N B3IS9465TSY**

Qty	Length	Diameter	Thread Pitch	Description
<b>HEADLIGHT BOLT KIT</b>				
4	25mm	8mm	1.25mm	Metric Bolt Grade 8H/T
4		8mm	1.25mm	Metric ZP Nut
16		8mm		Flat Washer
4		8mm		Spring Washer
4	3/4"	6 Gauge		Black Screw
4		6mm		Shaft Clip
<b>ADDITIONS</b>				
2	Flat Light Brackets			
1	Drivers Side Angle Bracket			
1	Passenger Side Angle Bracket			
<b>SEALED IN HALF SIZE CLEAR BAG AND PLACED IN MOUNT BOLT KIT BAG</b>				

<b>MOUNT BOLT KIT</b>				
2	25mm	8mm	1.25mm	Metric Bolt Grade 8H/T
2		8mm		Flat Washer
8	2"	1/2"	UNC	Bolt Grade 8H/T
8		1/2"	UNC	Nyloc Nut
16		1/2"		Flat Washer
4	2"	9/16"	UNC	Bolt Grade 8H/T
4		9/16"	UNC	Nyloc Nut
8		9/16"		Flat Washer
1	Fitting Instructions			P/N 92956465
2	Tilt Bullbar Warning Stickers			
2	200mm Cable Tie			
1	FTS Patch Harness			P/N ICHFTS-FSS
1	240mm Towpin (incl Locking Pin and Nylon Washer)			P/N 92956513
<b>SEALED IN CLEAR BAG AND BOXED WITH TOWPIN</b>				

<b>ATTACHED TO BULLBAR</b>					
2		3/4"	UNC	Eyebolt Grade 8H/T	P/N 92955350
2		3/4"		Flat Washer	
2	2 1/2"	5/8"	UNC	Bolt Grade 8H/T	
2		5/8"	UNC	Nyloc Nut	
4		5/8"		Flat Washer	
<b>ADDITIONS</b>					
2	LED Indicator Lights			P/N 92956509	
1	Steel Bullbar Mount				

**92956465TP Fitting Instruction**  
**FTS FH 4x4 TP 2008 –**





**92956465TP Fitting Instruction  
FTS FH 4x4 TP 2008 –**



**QUALITY CONTROL FORM**

**ASSEMBLY WELDING**

PRODUCT DETAILS			
PRODUCT NAME:	FTS FH 4x4 TP 2008 -		
PART NUMBER:	92956465TP	PRODUCT CODE:	B3IS9465TSY
WORK ORDER NUMBER:	_____	PURCHASE ORDER:	_____

CHECK PROCESS			
WELDER'S NAME:	_____	SIGNATURE:	_____
COMMENCEMENT DATE:	__/__/____		
ALL WELDS COMPLETED:	YES    NO	SIGNATURE:	_____
WELD QUALITY CHECKED:	YES    NO	SIGNATURE:	_____
CHECK MEASURE TO PLAN:	YES    NO	SIGNATURE:	_____
SUPERVISOR CHECK:	_____	DATE:	__/__/____
COMPLETION DATE:	__/__/____		

COMMENTS: \_\_\_\_\_  
\_\_\_\_\_  
\_\_\_\_\_  
\_\_\_\_\_

**92956465TP Fitting Instruction**  
**FTS FH 4x4 TP 2008 –**



**92956465TP Fitting Instruction  
FTS FH 4x4 TP 2008 –**



**QUALITY CONTROL FORM**

**STEEL WELDING**

PRODUCT DETAILS			
PRODUCT NAME:	FTS FH 4x4 TP 2008 -		
PART NUMBER:	92956465TP	PRODUCT CODE:	B3IS9465TSY
WORK ORDER NUMBER:	_____	PURCHASE ORDER:	_____

CHECK PROCESS			
WELDER'S NAME:	_____	SIGNATURE:	_____
COMMENCEMENT DATE:	__/__/____		
ALL WELDS COMPLETED:	YES    NO	SIGNATURE:	_____
WELD QUALITY CHECKED:	YES    NO	SIGNATURE:	_____
CHECK MEASURE TO PLAN:	YES    NO	SIGNATURE:	_____
SUPERVISOR CHECK:	_____	DATE:	__/__/____
COMPLETION DATE:	__/__/____		

COMMENTS: \_\_\_\_\_  
\_\_\_\_\_  
\_\_\_\_\_  
\_\_\_\_\_



**92956465TP Fitting Instruction**  
**FTS FH 4x4 TP 2008 –**



**92956465TP Fitting Instruction  
 FTS FH 4x4 TP 2008 –**

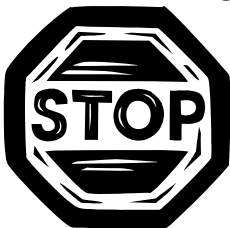


**DESPATCH CHECKLIST  
 B3IS9465TSY  
 ISUZU FTS FH 4x4 TP 2008-**

Work Order No:	
Finish:	
Transport:	
Due Date:	

BK	_____	2	Flat Light Brackets – <b>Included in Headlight Bolt Kit</b>
BK	_____	1	Drivers Side Angle Brackets – <b>Included in Headlight Bolt Kit</b>
BK	_____	1	Passenger Side Angle Brackets – <b>Included in Headlight Bolt Kit</b>
BK	_____	1	Headlight Bolt Kit – <b>Included in Mount Bolt Kit</b>
BK	_____	1	Mount Bolt Kit – <b>Boxed With Towpin</b>
BK	_____	1	240mm Locking Towpin (incl Nylon Washer)
OC	_____	1	Steel Mounting Bracket
OC	_____	2	LED Indicator Lights (ICLED33IND-95200CUST)
OC	_____	2	Overrides (3" CA01 Plastic)
OC	_____	2	Isuzu Badges
WR	_____	2	Eyebolts ( <sup>3</sup> / <sub>4</sub> " UNC ZP) and Washers – <b>Fitted To Bar</b>
WR	_____	2	2 <sup>1</sup> / <sub>2</sub> " x <sup>9</sup> / <sub>16</sub> " UNC Bolt Grade 8H/T – <b>Fitted To Bar</b>
WR	_____	2	<sup>9</sup> / <sub>16</sub> " Nyloc Nut – <b>Fitted To Bar</b>
WR	_____	4	<sup>9</sup> / <sub>16</sub> " Flat Washer – <b>Fitted To Bar</b>
WR	_____	2	LED Indicator Lights (ICLED33IND-95200CUST) – <b>Fitted to Bar</b>
WR	_____	1	Bolt Kit Box – <b>Taped to Bar</b>

**See other side of this page for photos of all mounts  
 IS THIS PRODUCT "THE BEST IT CAN BE"?  
 IF NO FIX BEFORE CONTINUING**



\_\_\_\_\_  
 Wrapper's Initials    Checker's Initials

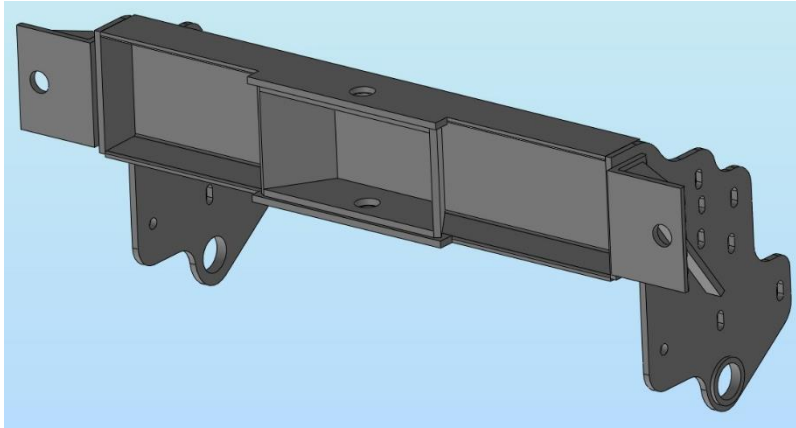
**ALL PARTS CHECKED AND COMPLETED BY:**

NUTS AND BOLTS: \_\_\_\_\_ DATE: \_\_\_\_/\_\_\_\_/\_\_\_\_

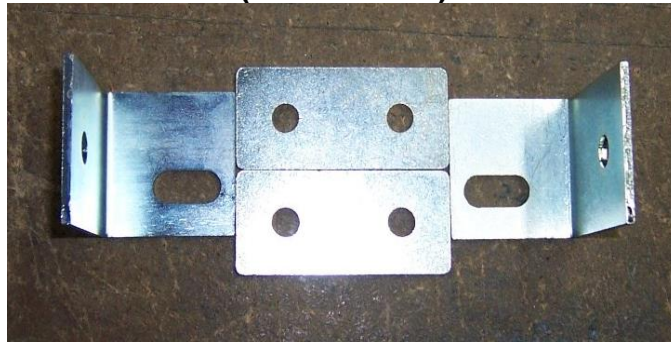
ORDER CONTROL: \_\_\_\_\_ DATE: \_\_\_\_/\_\_\_\_/\_\_\_\_

FINAL WRAP CHECK: \_\_\_\_\_ DATE: \_\_\_\_/\_\_\_\_/\_\_\_\_

**STEEL MOUNT**



**ANGLE AND FLAT LIGHT BRACKETS  
(IN BOLT KIT)**



\_\_\_\_\_  
Wrapper's Initials

/

\_\_\_\_\_  
Checker's Initials