

GA70002005 Fitting Instruction

700 SERIES SS



REMOVE BUMPER

DO NOT DISCARD, PARTS TO BE MOVED TO BULLBAR



CUT BRACKETS THEN REMOVE THE REST OF THE PROTECTION BAR

REMOVE STUDS



BOLT STEEL BRACKETS TO PASSENGER SIDE



BOLT STEEL BRACKETS TO DRIVER SIDE

GA70002005 Fitting Instruction

700 SERIES SS



POSITION MOUNT
LEAVE ALL BOLTS LOOSE



BOLT HEADLIGHT TO BRACKET
BOLT ON 25mm x 6mm BRACKET TO TOP OF LIGHT
LEAVE LOOSE



FIT ANGLE BRACKET SUPPLIED TO
OUTSIDE LOWER SECTION OF LIGHT
PASSENGER SIDE SHOWN



BOLT BRACKETS ON TRUCK TO REAR OF
STEEL MOUNT

GA70002005 Fitting Instruction

700 SERIES SS



TIGHTEN ALL BOLTS SO MOUNT IS LEVEL ACROSS THE TRUCK



(NOTE AFTER FITTING BULLBAR MOUNT YOU MAY NEED TO LOSSEN BOLTS TO ALIGN BULLBAR TO TRUCK)



REMOVE HEADLIGHT WASHER HOSE FROM THE REAR OF THE BUMPER

THIS WILL NEED TO BE TRIMMED UP AND RE-JOINED ON THE BULLBAR



FIT HEADLIGHT WASHER BRACKETS AS PER PHOTO

WHEN REMOVING HOSE FROM BUMPER YOU WILL NEED TO TRIM TO FIT ALONG THE TOP OF THE STEEL MOUNT

USE CABLE TIES TO SECURE TO THE MOUNT

GA70002005 Fitting Instruction

700 SERIES SS



AFTER POSITION BRACKET DRILL A 1/8" HOLE AND SCREW IN A SELF TAPPING SCREW TO STOP BRACKET FROM MOVING LEFT TO RIGHT



REMOVE INDICATOR ASSEMBLY AND CLIP IN WIRING HARNESS SUPPLIED



FIT TILT BULLBAR WARNING STICKER TO PASSENGER SIDE REAR OF CABIN NEAR TILT CAB LEVER



FIT BULLBAR AND ALIGN WITH TRUCK

GA70002005 Fitting Instruction

700 SERIES SS



LOWER BULLBAR AND CONNECT INDICATOR TO WIRING LEAVING ENOUGH CABLE FOR TILTING BULLBAR



RAISE BULLBAR AND TIGHTEN

CHECK INDICATOR AND HEADLAMPS ARE WORKING

LOCATE TOWPIN TO CENTRE HOLE OF BULLBAR

GA70002005 Fitting Instruction

700 SERIES SS



FITTING KIT

P/N GA70002005

P/N B4HN9703TSYF

Qty	Length	Diameter	Thread Pitch	Description	
4	3/4"	3/16"		Grub Screw	
4		3/16"		Nyloc Nut	
2	20mm	6mm		Metric Bolt Grade 8H/T	
2		6mm		Whiz Nut	
4		1/4"		Flat Washer	
4	25mm	8mm	1.25mm	Metric Bolt Grade 8H/T	
4	1 1/4"	3/8"	UNC	Bolt Grade 8H/T	
4		3/8"		Nyloc Nut	
8		10mm		Flat Washer	
4		5/16"		Flat Washer	
4	30mm	12mm	1.25mm	Metric Bolt Grade 8H/T	
2	40mm	12mm	1.25mm	Metric Bolt Grade 8H/T	
4	1 1/2"	1/2"	UNC	Bolt Grade 8H/T	
10		1/2"		Flat Washer	
4		1/2"		Nyloc Nut	
4	40mm	14mm	1.50mm	Metric Bolt Grade 8H/T	
7	2 1/2"	9/16"	UNC	Bolt Grade 8H/T	
4	2"	9/16"	UNC	Bolt Grade 8H/T	
11		9/16"		Nyloc Nut	
26		9/16"		Flat Washer	
2	Tek Screws				
2	16mm Hose Clamps				
1	Zinc Plated Left Washer Bracket				
1	Zinc Plated Right Washer Bracket				
1	Pair 6mm Folded Light Bracket – "Z" Shape				
2	277mm x 32mm x 6mm Long Steel Brackets				
7	300mm Cable Ties				
1	Fitting Instructions				
1	Tilt Cab Warning Sticker				
2	Indictor Wiring Harness				P/N ICHSS700FM1A
SEALED IN CLEAR BAG AND TAPED TO STEEL MOUNT					

ATTACHED TO BULLBAR					
4		3/4"	UNC	Eyebolt Grade 8H/T	P/N ICEYEBOLT
4		3/4"		Flat Washer	
2	2 1/2"	5/8"	UNC	Bolt Grade 8H/T	
2		5/8"	UNC	Nyloc Nut	
4		5/8"		Flat Washer	
ADDITIONS					
1	Steel Bullbar Mount				

**GA70002005 Fitting Instruction
700 SERIES SS**

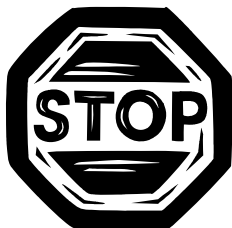


**DESPATCH CHECKLIST
B4HN9703TSYF
HINO 700 SERIES SS**

Work Order No:	
Finish:	
Transport:	
Due Date:	

BK	_____	1	Pair 6mm Folded Light Brackets "Z" Shape – In Bolt Kit
BK	_____	2	277mm x 32mm x 6mm Flat Steel Brackets – In Bolt Kit
BK	_____	1	Pair Zinc Plated Washer Brackets – In Bolt Kit
BK	_____	2	Wiring Harness (ICHSS700FM1A) – In Bolt Kit
BK	_____	1	Bolt Kit – Boxed With Towpin
BK	_____	1	Pair Chassis Extension Brackets – Boxed With Towpin
BK	_____	1	370mm Towpin (incl Nylon Washer)– Boxed in Large Bolt Kit Carton
OC	_____	1	Steel Mounting Bracket – Fitted To Bar
OC	_____	2	4" Overrides (CA02 Rubber) – Fitted To Bar
OC	_____	2	Blank Badges – Fitted To Overrides
WR	_____	2	LED Parker Lights (ICLED33IND-95200) – Fitted to Bar
WR	_____	4	Eyebolts (3/4" UNC ZP) and Washers – Fitted to Bar
WR	_____	2	2 1/2" x 5/8" UNC BoltGrade 8H/T – Fitted To Bar
WR	_____	2	5/8" Nyloc Nut – Fitted To Bar
WR	_____	4	5/8" Flat Washer – Fitted To Bar
WR	_____	1	Large Bolt Kit Box – Taped to Bar

**See other side of this page for photos of all mounts
IS THIS PRODUCT "THE BEST IT CAN BE"?
IF NO FIX BEFORE CONTINUING**



Wrapper's Initials Checker's Initials

ALL PARTS CHECKED AND COMPLETED BY:

NUTS AND BOLTS: _____ DATE: ____/____/____

ORDER CONTROL: _____ DATE: ____/____/____

FINAL WRAP CHECK: _____ DATE: ____/____/____

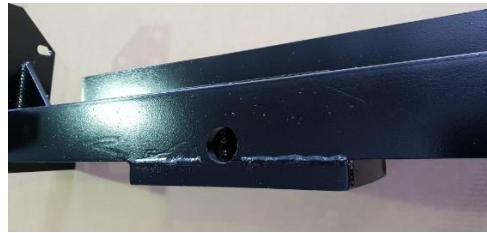
GA70002005 Fitting Instruction

700 SERIES SS

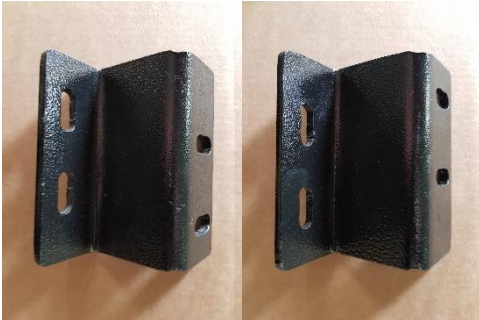


Image Currently Not Available

BULLBAR



MOUNT



6mm FOLDED LIGHT BRACKETS
(Left Side/Right Side)

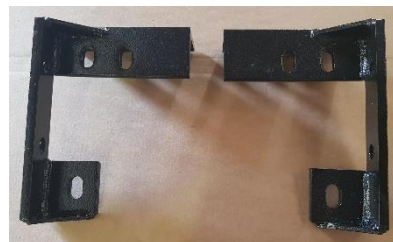
MOUNT TOP VIEW



277mm x 32mm x 6mm FLAT STEEL BRACKETS



ZINC PLATED WASHER BRACKETS



CHASSIS EXTENSION BRACKETS