



UD TRUCKS

GENUINE PARTS

FITTING INSTRUCTIONS

BULLBAR to suit

UD TRUCKS EURO 5 PK

SEE NEXT PAGE FOR PART NUMBER BREAKDOWN

Scope:

These instructions detail the correct fitment procedure of a Genuine PKC8E Bullbar.

These instructions must be followed exactly to ensure correct fitment and to ensure that the Bullbar is SRS compatible and FUPS (ADR 84/00) compatible.

All tightening torques must be adhered too as specified in these instructions.

The Bullbar, its mounting system and all of its fixings must not be modified in any way.

CAUTION

The combined weight of the Bullbar, its mounting frame and the fixings weighs approximately 115 kg.

Care should be taken to prevent injury during installation

Please carefully read these instructions BEFORE commencing work

PART NUMBER BREAKDOWN

PART NUMBER	DESCRIPTION	COMMENTS
99999 BB006 A	BULLBAR CONDOR PK	POLISHED ALUMINIUM FINISH SUITS PK MODELS WITH FUPS BRACKET 62753Z03E FITTED
99999 BB006 HT	BULLBAR CONDOR PK	HAMMER TONE FINISH SUITS PK MODELS WITH FUPS BRACKET 62753Z03E FITTED
99999 BB010 A	BULLBAR CONDOR PK	POLISHED ALUMINIUM FINISH SUITS PK MODELS WITH FUPS BRACKET 626753Z03D FITTED
99999 BB010 HT	BULLBAR CONDOR PK	HAMMER TONE FINISH SUITS PK MODELS WITH FUPS BRACKET 626753Z03D FITTED

IMPORTANT NOTES

The Bullbar mounting frame has mounting points on the FUPS bar, the FUPS bar which is fitted to the vehicle is governed by the factory tyre size. The above table lists which part number is required for which model given factory tyre size.

If the tyre size is changed after initial build of the truck then this WILL NOT change the model of Bullbar needed.

For further information or clarification please contact the Spare Parts department of UD TRUCKS.

Section 1 – BOM

QTY	DESCRIPTION	NOTES
1	ALUMINIUM BULLBAR	P/N: AUS000675 (Both Polished Aluminum & Hammer Tone Finish)
1	MOUNTING FRAME	P/N: AUS000676*/AUS000677** (Black Powdercoat Finish)
2	3/4" x 1.5" Eye Bolts	Bullbar to steel mounting frame
2	3/4" Flat Washers	Washers for 3/4" Eye Bolt
2	M20 x 2.0 x 60 Bolt	Pivot Bolts
2	M20 x 2.0 Nyloc Nut	Nuts for Pivot Bolts
4	M20 Flat Washer	Washers for Pivot Bolts
2	9/16" x 4" Bolt	Mounting Frame to Chassis (LHS with Tow Hook)
6	9/16" x 2" Bolt	Mounting Frame to Chassis (4 RHS & 2 LHS)
8	9/16" Nut	Nuts for Chassis Mount Bolts
16	9/16" Flat Washer	Flat Washers for Chassis Mount Bolts
8	9/16" Spring Washer	Spring Washers for Chassis Mount Bolts
8	M6 x 1.0 x 20 Bolt	Headlight Mount & Fog Light Mount
2	M6 x 1.0 x 25 Bolt	Headlight Mount
2	M6 x 1.0 x 40 Bolt	Headlight Mount
12	M6 x 1.0 Flange Nut	Nuts for Headlight & Fog Light Bolts
12	M6 Flat Washer	Washers for Headlight & Fog Light Bolts
2	M8 x 1.25 x 25 Bolt	Fog Light Mount
2	M8 x 1.25 Flange Nut	Nuts for Fog Light Bolts
2	M8 Flat Washer	Washers for Fog Light Bolts
6	Short Cable Ties	Used to secure Headlight and Fog Light Harnesses
1	Tilt Warning Decal	

*AUS000676 for Kit P/N's 99999 BB006A & 99999 BB006HT

**AUS000677 for Kit P/N's 99999 BB010A & 99999 BB010HT

Before you commence installation please ensure that you have been supplied all these parts in the kit provided.

Section 2 – Installation Procedure

STEP 1

1. Ensure that the vehicle is parked on flat level ground.
2. Apply the park break and chock the wheels.
3. Ensure all necessary fitment parts have been provided as per the Bill of Materials
4. Disconnect the headlight and fog light wiring harness as shown in Fig. 1

LHS Shown
Repeat for RHS

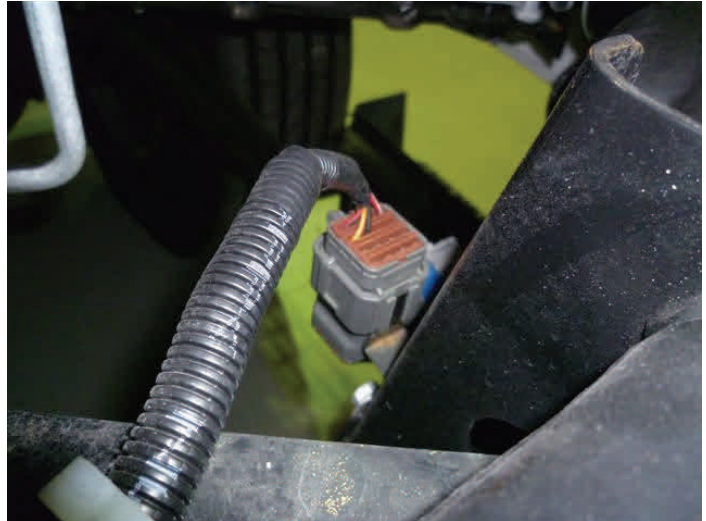


Fig. 1

STEP 2

Remove the bumper from the truck (including the attached light mount bar, headlights and fog lights) by removing the four (4) bolts and two (2) nuts as shown in Fig. 2

Discard the 4 bolts and 2 nuts.
Retain bumper assembly.

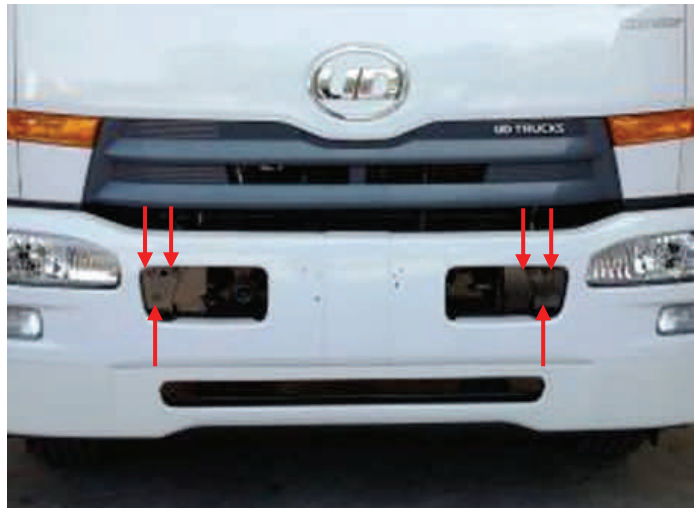


Fig. 2

STEP 3

Remove the steel headlight mount frame (including attached headlights and fog lights) from the rear of the bumper by removing the 4 M10 nuts and the 3 M8 bolts from either side.

Discard the 8 x M10 bolts, the 6 x M8 bolts and the bumper.
Retain the steel light mount frame (including lights).

LHS Shown.
Repeat for RHS.

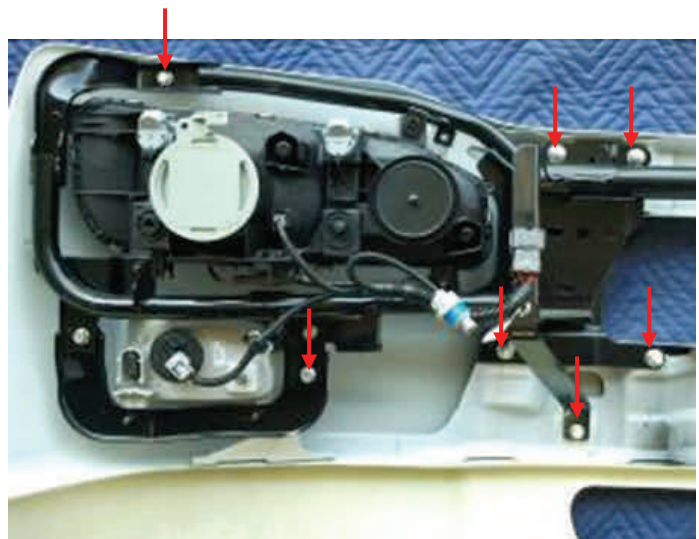


Fig. 3

STEP 4

Disconnect the wiring harness from the back of the headlight and fog light. Also disconnect any plastic retaining clips which secure the harness to the steel frame.

Retain the Harnesses.

LHS Shown.

Repeat for RHS.



Fig. 4

STEP 5

Remove the Headlights and Fog lights from the steel mounting frame by removing the 2 x M6 nuts and 5 x M6 bolts from either side.

Retain the headlights and fog lights.

Discard the 10 M6 bolts and the 4 M6 nuts.

Discard the steel mounting frame.

RHS Shown.

Repeat for LHS.



Fig. 5

STEP 6

Disconnect the light wiring harness from the bumper hanger bracket.

Remove the bumper hanger bracket from the chassis by removing the 4 x M14 fixings from either side.

Discard all the fixings and the bumper hanger brackets. Retain the tow hook from the LHS.

LHS Shown.

Repeat for RHS.

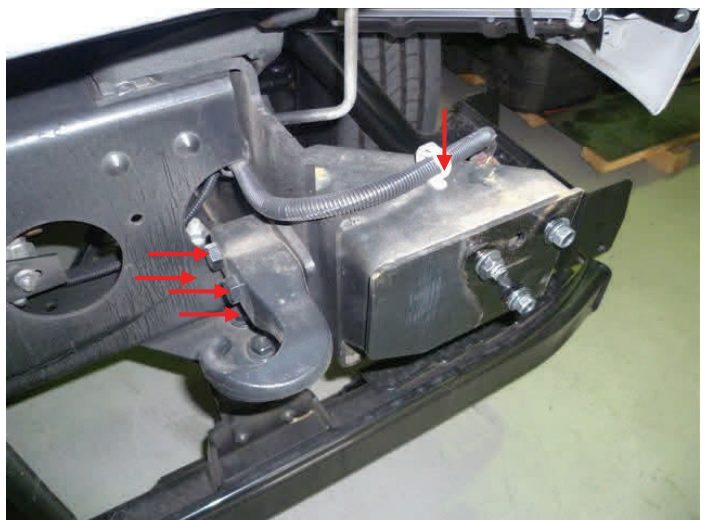


Fig. 6

STEP 7

Remove the 4 x nuts which secure the FUPS bar as shown in Fig. 7

Retain the nuts.



Fig. 7

STEP 8

Fit the NEW steel Bullbar mounting frame as shown in Fig. 8

- LHS:
 2 x 9/16" x 4" Bolts
 2 x 9/16" x 2" Bolts
 8 x 9/16" Flat Washers
 4 x 9/16" Spring Washers
 4 x 9/16" Nuts

Note: Refit the Standard tow hook removed in Step 6 as shown in Fig 8. using the 9/16" x 4" bolts mentioned above.

Note: Bolts should be inserted from the outside, i.e. nuts on the inside of the chassis rails.

A flat washer is to be placed under the head of each nut and each bolt, whilst one spring washer should be placed under each nut only.

LHS Shown.

Repeat for RHS (using 4 x 9/16" x 2" Bolts as there is no tow hook)

Torque all the 9/16" fixings to 177 Nm

Refit the 4 x M12 Flange nuts removed in Step 7 to the FUPS bar mounts as shown in Fig.9

RHS Shown.

Repeat for LHS.

Torque all the M12 fixings to 130 Nm

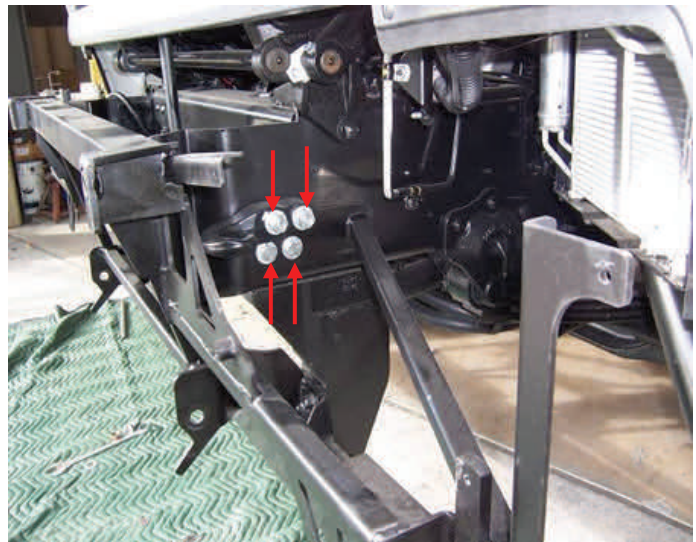


Fig. 8

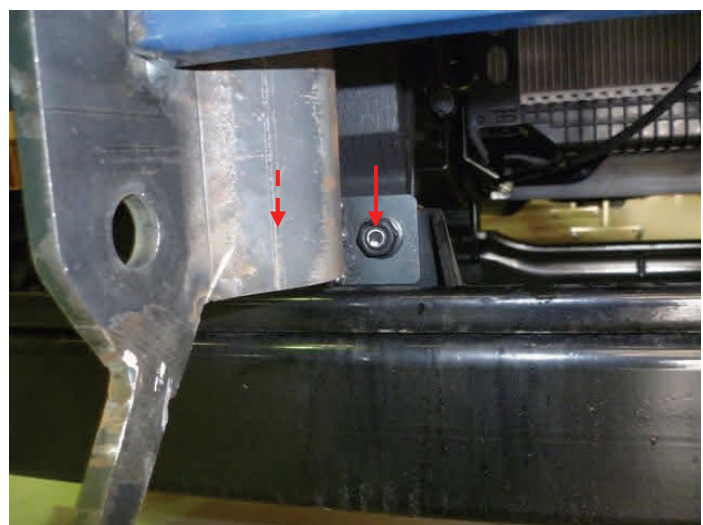


Fig. 9

STEP 9

Refit the headlights and fog lights using the NEW fixings supplied as shown in Fig. 10

LHS:

- 4 x M6 x 1.0 x 20 Bolts (1)
- 1 x M6 x 1.0 x 40 Bolt (2)
- 1 x M6 x 1.0 x 25 Bolt (3)
- 1 x M8 x 1.25 x 25 Bolt (4)
- 6 x M6 Flat Washers
- 1 x M8 Flat Washer
- 6 x M6 Flange Nut
- 1 x M8 Flange Nut

LHS Shown, Repeat for RHS

Notes: Washer to be placed under head of all bolts, and nuts to be on metal surface. i.e. bolt on plastic side.

Torque all M6 fixings to 12 Nm and all M8 fixings to 29 Nm

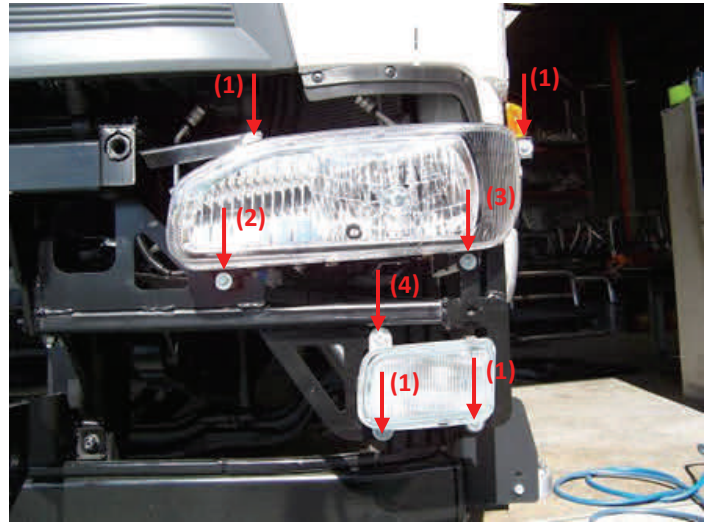


Fig. 10

STEP 10

Reconnect the headlight and fog light wiring harnesses disconnected in Step 4, also reconnect the light harness to the truck harness that was disconnected in Step 1

Using the supplied cable ties route the harness as shown in Fig.11

LHS Shown.
Repeat for RHS.

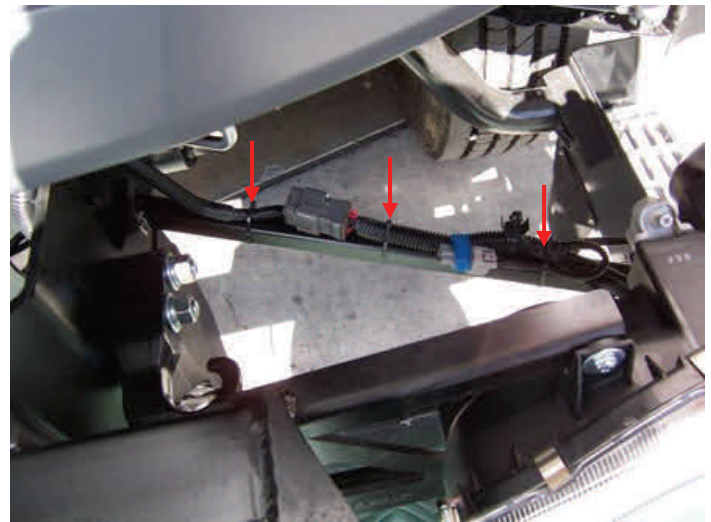


Fig. 11

STEP 11

Offer the Bullbar up to the steel mounting frame. Loosely fit the eye bolts and flat washers as shown.



Fig. 12

STEP 12

Fit the M20 Pivot Bolts and Nyloc Nuts as shown.
Place a flat washer under the head of the bolt and under the nut.

RHS Shown.
Repeat for LHS

Do not over tighten bolts
Tighten to aluminium tabs just start to pull in.



Fig. 13

STEP 13

Remove the eyebolts and check Bullbar Pivot.

Whilst Bullbar is pivoted check cab tilt. Ensure that when cab is at full tilt there is clearance between cab and Bullbar.
Caution: ensure no loose items in cab which could cause damage when cab is tilted.

Lower the cab and return the Bullbar to fixed position.
Reinsert the Eyebolts and washers. Tighten.

Check All Light Operation.

Polish and clean Bullbar to remove all fingerprints and debris accumulated in fitting.



Fig. 14

STEP 14

Fit Tilt Bullbar Warning Decal as shown.
Before decal is applied, ensure cab surface is clean of all debris, water, oil, etc.



Fig. 15