

**GA50002007 Fitting Instructions**  
**HINO 500 SERIES WIDE CAB EURO 5 MY11-MY16**  
**4 POST BULLBAR**



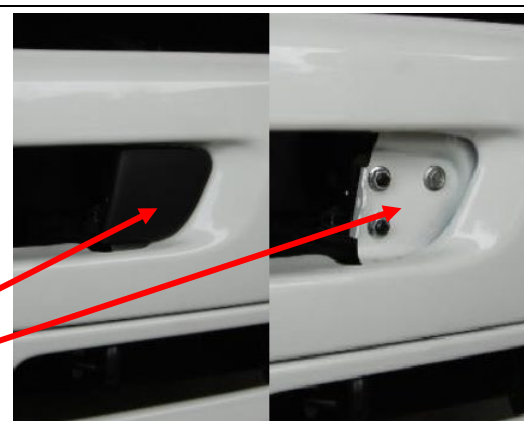
TO SUIT MODELS: PRO9-(FG) PRO 10-(GH) PRO 12-(FL) PRO 14-(FM)

**Step 1.**  
Park the vehicle on level ground and apply the park brake.  
Check installation hardware and read fitting instructions before commencing.



**Step 2.**  
Remove the bumper bar by removing black plastic covers to access the fasteners retaining the bumper.  
Release the fasteners from under the bumper each side of the vehicle.

Black plastic covers  
Remove and Discard fasteners



**Step 3.**  
Disconnect the main headlight wiring harness from the OE angle bracket and remove from the vehicle chassis, retain for refitting.  
Discard fasteners and bracket.

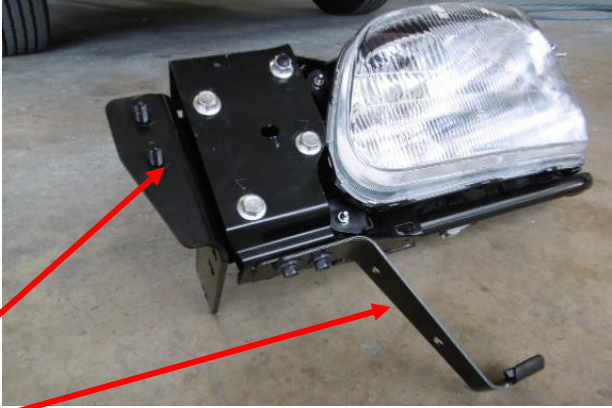
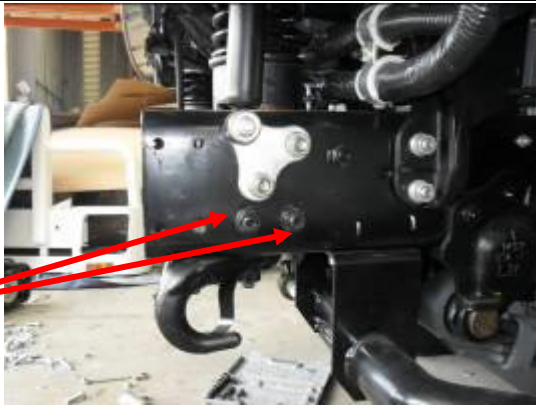




**Step 4.**  
Open the bonnet, remove the indicator fasteners. Carefully disconnect the indicator plug and connect the patch harness in line, allow the patch harness to hang loosely behind the indicator body.  
Re-fasten the indicator back in place.



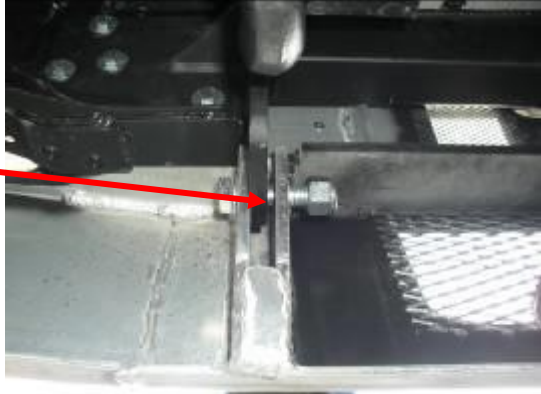


**GA50002007 Fitting Instructions**  
**HINO 500 SERIES WIDE CAB EURO 5 MY11-MY16**  
**4 POST BULLBAR**



<p><b>Step 5.</b> Disconnect and remove the headlight wiring harness from the chassis. Remove the headlight wiring harness support and discard. Remove the head light mounts from the chassis and separate the headlight from the chassis mount and bumper lower mount. Discard fasteners and chassis mount.</p> <p>Chassis mount Bumper lower mount</p>	
<p><b>Step 6.</b> Remove and discard two bolts from directly below the cabin shock mount on each side of the vehicle.</p> <p>Remove and discard two bolts</p>	
<p><b>Step 7.</b> Fit the chassis mount into position and lightly fasten using 5/8" x 2" bolts, flat washers and nyloc nuts through the two rear holes. Fasten lightly through the four front holes using 1/2" x 2" bolts, flat washers and nyloc nuts.</p>	
<p><b>Step 8.</b> Align the head light assemblies with the chassis mounts and fasten using 3/8" x 3" set screws, flat washers and nyloc nuts. Align the head lights so they sit as far in towards the chassis rail and as level as possible and tighten fasteners.</p>	

**GA50002007 Fitting Instructions**  
**HINO 500 SERIES WIDE CAB EURO 5 MY11-MY16**  
**4 POST BULLBAR**



<p><b>Step 9.</b> Position the Bull bar on the chassis mount and fasten with two 5/8" x 2-1/2" hinge bolts, flat washers and nyloc nuts. Tighten bolts so nylon on nut engages on bolt and mounts on bullbar just start to pull in. Align the eyebolts and tighten.</p>	
<p><b>Step 10.</b> Align Bull bar with the vehicle and tighten all fasteners. Open the cabin doors fully to check Bull bar to cabin door clearance.</p>	
<p><b>Step 11.</b> Remove the eyebolts and tilt the Bull bar. Connect the Park/Indicator lights and check the operation of all lights. Once the lights have been checked re-fasten and tighten the eyebolts. (NOTE Deluxe 4 bar shown in photo)</p>	
<p><b>Step 12.</b> Fit Tilt Bullbar Warning sticker to passenger's side rear of cabin near tilt lever.</p>	

**GA50002007 Fitting Instructions**  
**HINO 500 SERIES WIDE CAB EURO 5 MY11-MY16**  
**4 POST BULLBAR**

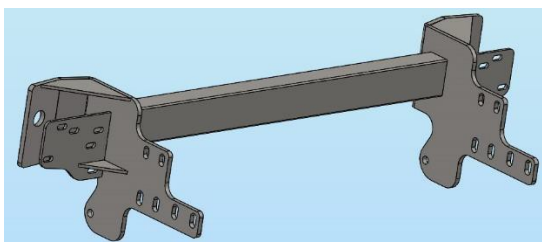


**Fitting Kit**

- 8 - 3/8" x 3" Set Screws
- 8 - 3/8" Nyloc Nuts
- 16 - 3/8" Flat Washers
- 8 - 1/2" x 2" Hex Bolts
- 8 - 1/2" Nyloc Nuts
- 8 - 1/2" Flat washers
- 4 - 5/8" x 2" Hex Bolts
- 4 - 5/8" Nyloc Nuts
- 4 - 5/8" Flat Washers
- 2 - Park/Indicator ICH Pro Ranger patch Harness
- 2 - Patch harness adapters
- 1 - Tilt Cab sticker
- 1 - 8 - Cable ties

**Fitted to Bull bar**

- 1 - Chassis mount assembly
- 2 - 3/4" Eyebolts
- 2 - 3/4" Flat Washers
- 2 - 5/8" 2-1/2" Hex Bolts
- 2 - 5/8" Nyloc Nuts
- 4 - 5/8" Flat Washers
- 1 - Pair ICLED 104 BL Park/Indicator assemblies (1 box)



- 1 - Chassis mount assembly

**GA50002007 Fitting Instructions**  
**HINO 500 SERIES WIDE CAB EURO 5 MY11-MY16**  
**4 POST BULLBAR**



**P4HN9524SYF**

Work Order #		<b>See other side of this page for photos of all mounts</b>
Finish:		
Transport:		
Due Date:		

- OC \_\_\_\_\_ 1 Steel Mounting Bracket
- OC \_\_\_\_\_ 1 Pair blank Indicator / Park lights (ICLED104BLK)
- WR \_\_\_\_\_ 1 Steel Mounting Bracket – **Fitted to Bar**
- WR \_\_\_\_\_ 2 Eyebolts (<sup>3</sup>/<sub>4</sub>" UNC ZP) and Washers – **Fitted to Bar**
- WR \_\_\_\_\_ 2 2 1/2" x <sup>9</sup>/<sub>16</sub>" UNC Bolt Grade 8H/T – **Fitted to Bar**
- WR \_\_\_\_\_ 2 <sup>9</sup>/<sub>16</sub>" Nyloc Nut – **Fitted to Bar**
- WR \_\_\_\_\_ 4 <sup>9</sup>/<sub>16</sub>" Flat Washer – **Fitted to Bar**
- WR \_\_\_\_\_ 1 Pair blank Indicator / Park lights (ICLED104BLK) – **Fitted to Bar**
- WR \_\_\_\_\_ 1 Bolt Kit – **Taped to Mount**



**Is this product “the best it can be” Yes**

**If NO fix before continuing**

\_\_\_\_\_/\_\_\_\_\_  
Wrapper’s initials / Checker initials

All parts checked and completed by:

Nut and bolts: \_\_\_\_\_ Date    /    /   

Order control: \_\_\_\_\_ Date    /    /   

Final wrap check: \_\_\_\_\_ Date    /    /

**GA50002007 Fitting Instructions**  
**HINO 500 SERIES WIDE CAB EURO 5 MY11-MY16**  
**4 POST BULLBAR**

