



**WORLD'S BEST
ALLOY BULLBARS**

East Coast Bullbars (ECB Pty Ltd)

Tel: 07 3897 5700

Fax: 07 3283 1168

ecb@ecb.com.au www.ecb.com.au

29 Snook St
Clontarf QLD 4019
Australia

Po Box 122
Margate QLD 4019
Australia

BI40SY

REPLACES: 00.00.00

REVISED: 23.06.15

FITTING INSTRUCTIONS

IVECO C50 VAN & CAB CHASSIS 1/15- BIG TUBE PROTECTION BAR VEHICLE FRONTAL PROTECTION SYSTEM (VFPS) FOR AIR BAG & ADR COMPLIANT VEHICLES

Check installation hardware before commencing.

NOTE: It is recommended that a pneumatic air hacksaw and a skilled operator is on hand for the cutting of the vehicle bumper bar

1. Open bonnet
2. Release the fasteners and remove the inner wheel arch splash guards from each side of the vehicle. **See figure 1.** Retain for re-fitment
3. Release the fasteners under the front bumper bar. Retain all fasteners for re-fitting. **See figure 2.**
4. Release the caps on the bumper bar covering bumper fasteners. Release the three nuts each side fastening the bumper bar to the chassis and discard. Remove the oblong inserts from the bumper and discard. **See figure 3**
5. Release three nuts under the wheel arch each side fastening the bumper bar reinforcing panel to the chassis bracket. Retain all fasteners. **See figure 4.**
6. Disconnect the indicators and fog lights and remove the bumper bar. Remove the indicators and fog lights from the bumper bar and discard. **See figure 5.**
7. Remove the bumper bar mount from the chassis rail, discard the fasteners. **See figure 6.**
8. Position the driver's side steel mounting bracket (supplied) using three M12 x 75 x 1.75mm bolts, flat washers, spring washers and small bolt washer plate (supplied) through the side. Fasten under the steel mounting bracket using two M12 x 1.75 x 40mm bolts, flat washers, spring washers, large bolt washer plate and nuts (supplied). **FINGER TIGHTEN ONLY. See figure 7.**
9. Position the passenger side steel mounting bracket (supplied) using one M12 x 40 x 1.75mm bolt, flat washer, spring washer and nut through the rear hole. In front holes use two M12 x 50 x 1.75 bolt, flat washers, spring washer, bolt washer plate and nut (supplied). Fasten under the steel mounting bracket using two M12 x 1.5 x 40 bolts, flat washers, spring washers, large bolt washer and nuts (supplied) **FINGER TIGHTEN ONLY. See figure 8.**
10. Align steel mounting brackets so that the alloy mounting brackets on the protection bar will fit to the outside of the steel mounting brackets. **TIGHTEN ALL BOLTS.**
11. Place the bumper bar mount into position each side and mark a line along the inside edge onto the rear of the bumper, offset 15mm and mark a second line to form the initial slot width. Once the bumper bar is marked for cutting discard the inner angle section of the chassis mount. **See figure 9.**



**WORLD'S BEST
ALLOY BULLBARS**

East Coast Bullbars (ECB Pty Ltd)

Tel: 07 3897 5700

Fax: 07 3283 1168

ecb@ecb.com.au www.ecb.com.au

29 Snook St
Clontarf QLD 4019
Australia

Po Box 122
Margate QLD 4019
Australia

12. Start the slot cut from the bottom of the lower bumper mount holes and extend up to approximately 20mm above the top of the upper bumper mount hole. **See figure 10. NOTE:** This slot may need to be enlarged later to allow better fitment as the steel mounting brackets need to slide through.
13. Position the bumper bar mounts (removed in step 7) and fasten using the original nuts to each side of the vehicle. Push the bumper mount up against the steel mounting bracket and **TIGHTEN IN POSITION. See figure 11.**
14. Using the harnesses and scotch locks (supplied) attached the Earth wire (white), Indicator Wire (green) and Park wire (black) onto the vehicle wiring harnesses located at the rear of the headlights. Connect the fog light adaptor harness (supplied) direct to the vehicle's fog light connector. **See figure 12.**
15. Attach the bumper bar back onto the vehicle resulting in the steel mounting brackets protruding through the bumper bar. Align the bumper bar with the bumper bar mounting and lightly fasten using large flat washers and M8 nylock nuts (supplied). Align the rear bumper bar mounting (located under the wheel arch) and fasten using the original fasteners. **See figure 13.**
16. Place the tow hook into position and **TIGHTEN BY HAND** fully then using a long bar tighten another ½ turn to lock into place. The tow hook will remain in place after the protection bar is fitted. The tow hook should end up horizontal after tightening. **See figure 14.**
17. Attach ECB fog lights to protection bar. Place M6 x 20 bolts, spring washers (supplied) through light mount from inside and attach nut to top. Slide assembly into light mount in Protection bar and centralize light to hole.) **TIGHTEN FIRM ONLY. See figure 15.** Fit ECB fog light trims (supplied) to protection bar. **NOTE:** Wider part of trim faces to centre.
18. Fit ECB LED indicator / park lights into protection bar as per instructions supplied with the LED indicator kit. **NOTE:** Ensure park light is to outside. **See figure 16.**
19. Screw resistor to welded plate on lower rear leg on channel using 6g x 16 screws (supplied). Wire one side of resistor into positive of indicator (green) and other side to negative (white). Shrink wrap all connections with heat shrink (supplied).
20. Attach 6mm clip lock trim (supplied) to top of ECB protection bar. **NOTE:** Trim off lower edge on an angle so trim will sit flush with end of protection bar. **See figures 17, 18 and 19.**
21. Attach 6mm clip lock trim (supplied) to tow hook cut outs in the centre skirt. **See figure 20.**
22. Attach protection bar to the steel mounting brackets using M12 x 1.75 x 40mm bolts, flat washers, spring washers and nuts (supplied) **FINGER TIGHTEN ONLY.** Align protection bar with vehicle **See figures 21 and 22**
TIGHTEN ALL BOLTS.
23. Check that the upper air vents in the protection bar are fitted to direct the air flow downward. **See figure 23.**
24. Check for correct operation of lights and refit the inner wheel arch splash guards.
25. Ensure number plate does not cover air vents **see figure 23.**

ENSURE NUMBER PLATE IS CLEARLY VISABLE

Note: When fitting/refitting the licence plate to the vehicle, ensure there is no obstruction to licence plate vision in accordance with local authorities. If required relocate licence plate to an alternate location.



East Coast Bullbars (ECB Pty Ltd)

Tel: 07 3897 5700

Fax: 07 3283 1168

ecb@ecb.com.au www.ecb.com.au

WORLD'S BEST
ALLOY BULLBARS

29 Snook St
Clontarf QLD 4019
Australia

Po Box 122
Margate QLD 4019
Australia

Further VFPS Notes:

- a) Do not attach VFPS to the vehicle using anchorages not intended for this purpose (e.g. engine mounting bolts).
- b) Do not use this product for any vehicle make or model, other than those specified by the VFPS manufacturer.
- c) Do not remove the plaque or label from the VFPS.
- d) Do not modify the structure of the VFPS in any way.
- e) No accessory or fitment should project forward of the VFPS forward profile.
- f) **ENSURE THESE INSTRUCTIONS ARE LEFT WITH VEHICLE OWNER AND/OR OPERATOR.**

IMPORTANT INFORMATION

Periodically check bolts and nuts for correct tightness, especially if travelling on rough roads

FITTING KIT

1 – Pair steel mounting brackets.	2 – M6 flat washers
2 – Large bolt washer plates (100 x 50 x 6mm)	2 – M6 spring washers.
2 – Small bolt washer plates (80 x 50 x 6mm)	2 – M6 nuts
3 – M12 x 1.75 x 75mm bolts.	4 – 6g x 16 screws
11 - M12 x 1.75 x 40mm bolts.	1 – 2100mm length 6mm clip lock.
2 – M12 x 1.75 x 50mm bolts.	2 – 300mm lengths 6mm clip lock
27 – M12 flat washers.	1 – Pair ECB LED indicator / park / DRL lights
16 – M12 spring washers.	2 – 50 watt resistors (ICLED R12 / 2)
11 – M12 nuts.	8 – Cable locks
6 – M8 x 1.25 nyloc nuts.	1 – Pair ECB Fog lights
6 – M8 heavy duty flat washers.	2 – Fog light trims
2 – M6 x 25mm bolts	

Retain the fasteners and inner splash guards



Figure 1

Release the fasteners



Figure 2



East Coast Bullbars (ECB Pty Ltd)

Tel: 07 3897 5700

Fax: 07 3283 1168

ecb@ecb.com.au www.ecb.com.au

WORLD'S BEST
ALLOY BULLBARS

29 Snook St
Clontarf QLD 4019
Australia

Po Box 122
Margate QLD 4019
Australia

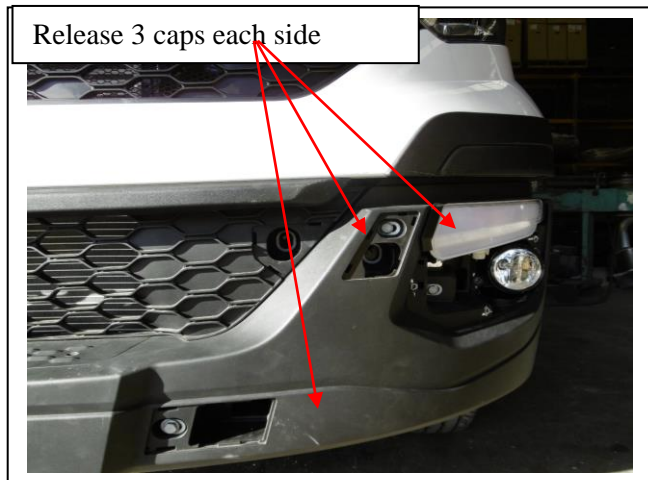


Figure 3

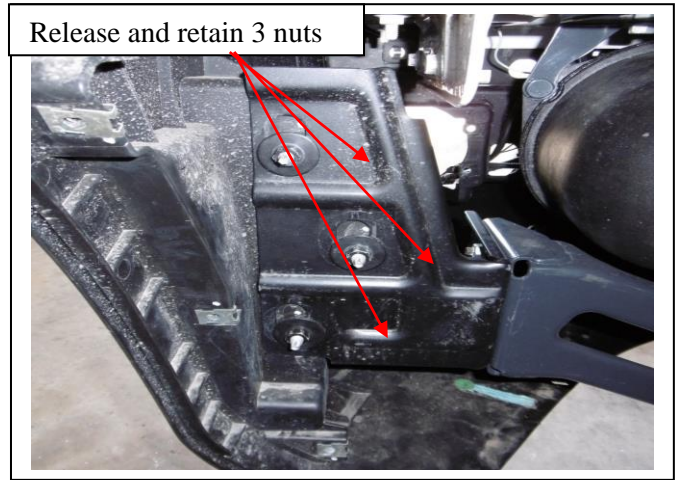


Figure 4



Figure 5

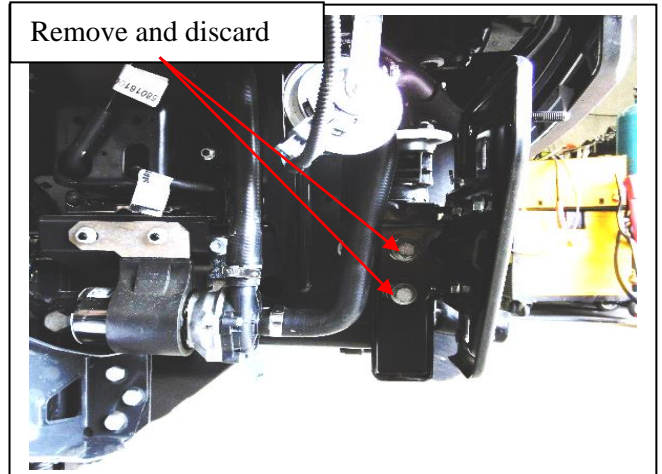


Figure 6

M12 x 1.75 x 75mm bolts
Small bolt washer plate (80 x 50mm)

Small bolt washer plate (80 x 50mm)

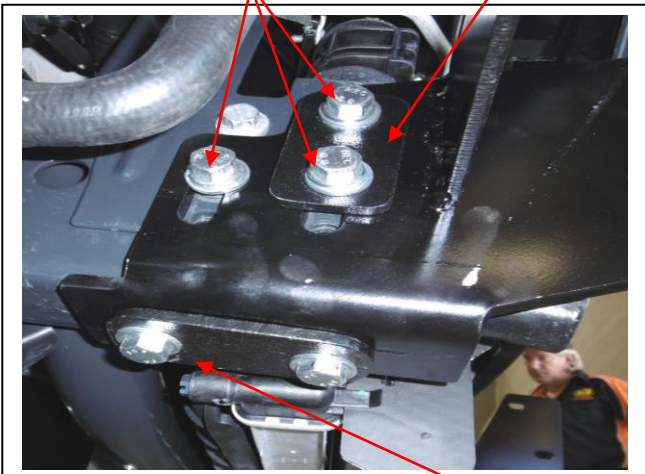


Figure 7 Large bolt washer plate (100 x 50mm)

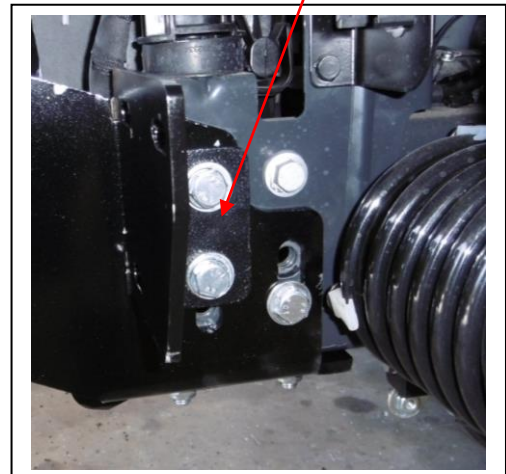


Figure 8



**WORLD'S BEST
ALLOY BULLBARS**

East Coast Bullbars (ECB Pty Ltd)

Tel: 07 3897 5700

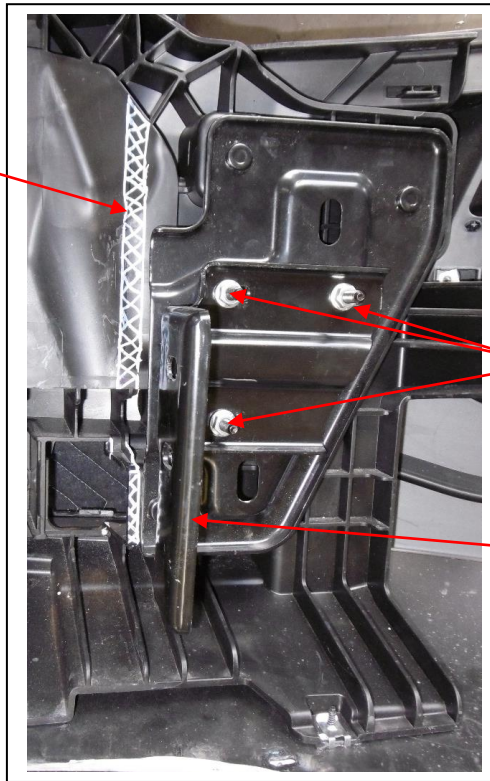
Fax: 07 3283 1168

ecb@ecb.com.au www.ecb.com.au

29 Snook St
Clontarf QLD 4019
Australia

Po Box 122
Margate QLD 4019
Australia

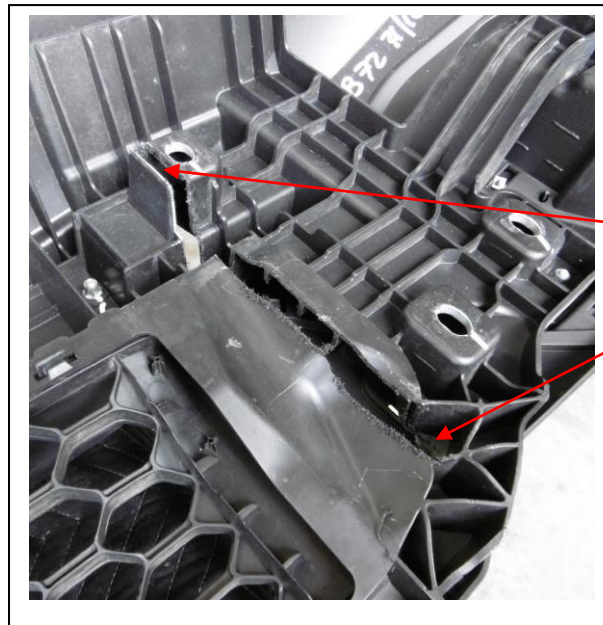
Mark along inside edge of mount
and 15mm outwards and cut slot



Retain the fasteners

Discard the inner angle section

Figure 9



Start slot cut at bottom and
extend up to approx. 20mm
above the top of the bumper
mount hole

Figure 10



East Coast Bullbars (ECB Pty Ltd)

Tel: 07 3897 5700

Fax: 07 3283 1168

ecb@ecb.com.au www.ecb.com.au

29 Snook St
Clontarf QLD 4019
Australia

Po Box 122
Margate QLD 4019
Australia

Original nuts

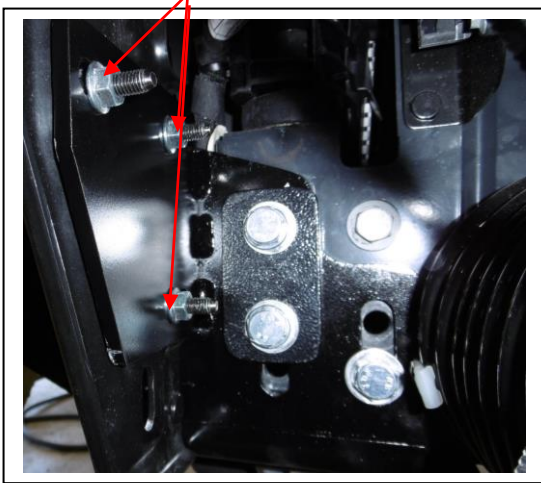


Figure 11

Connect fog light adaptor to harness to vehicle fog light connector



Figure 12

Align bumper bar mounts and lightly fasten

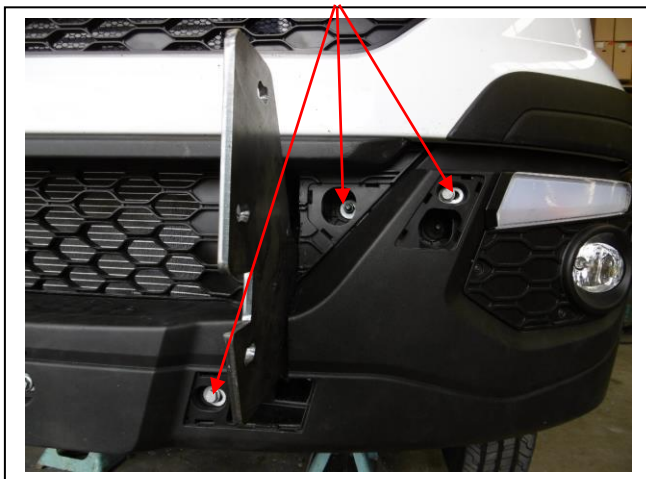


Figure 13

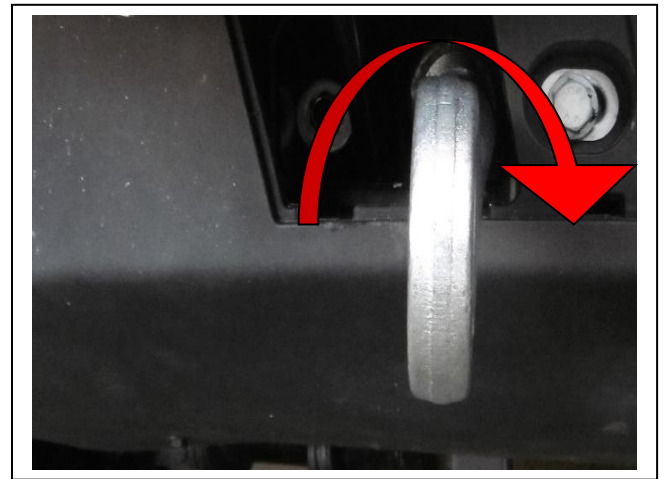


Figure 14

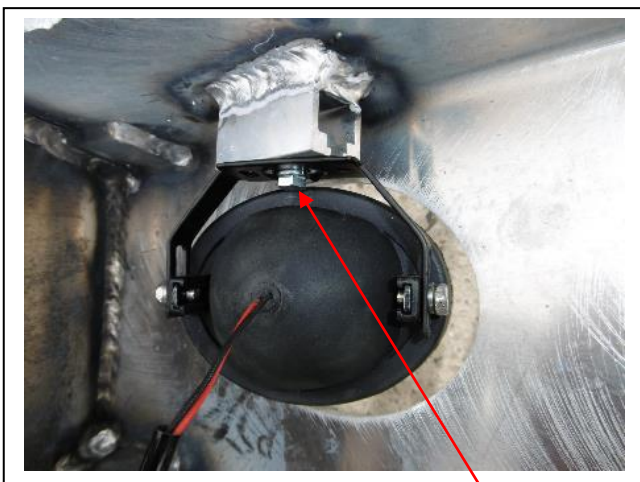
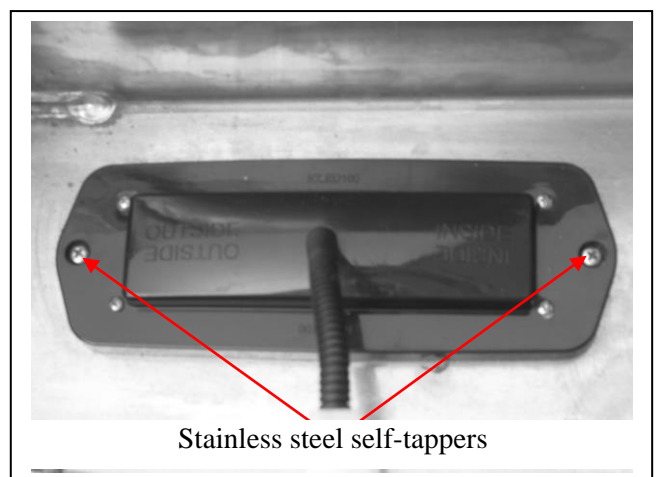


Figure 15

M6 nut



Stainless steel self-tappers

Figure 16



East Coast Bullbars (ECB Pty Ltd)

Tel: 07 3897 5700

Fax: 07 3283 1168

ecb@ecb.com.au www.ecb.com.au

29 Snook St
Clontarf QLD 4019
Australia

Po Box 122
Margate QLD 4019
Australia

WORLD'S BEST
ALLOY BULLBARS

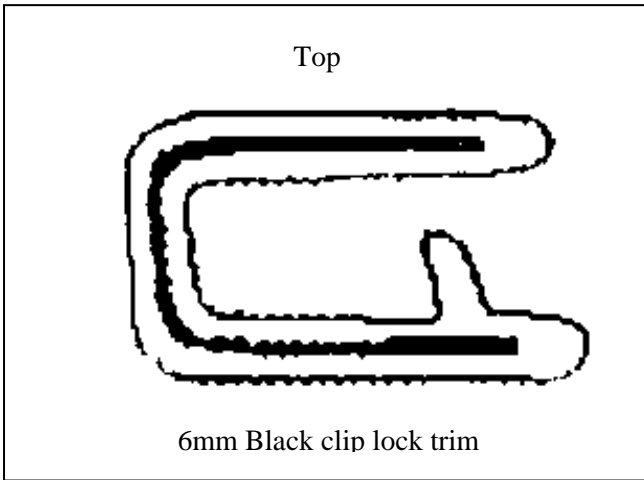


Figure 17

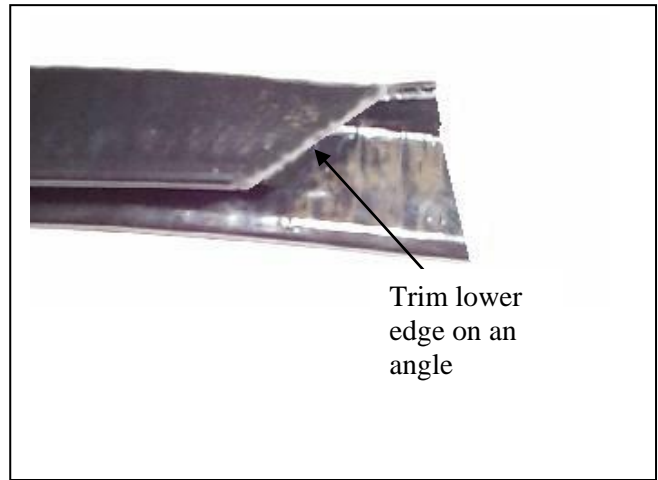


Figure 18

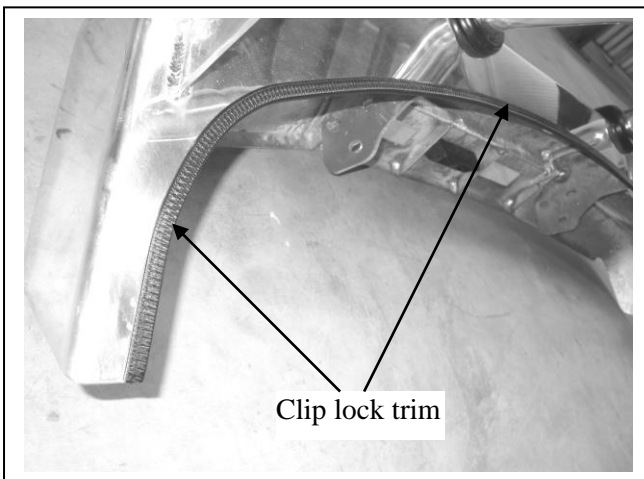


Figure 19



Figure 20



Figure 21 – Front view shown



Figure 22 – Side view shown



**WORLD'S BEST
ALLOY BULLBARS**

East Coast Bullbars (ECB Pty Ltd)

Tel: 07 3897 5700

Fax: 07 3283 1168

ecb@ecb.com.au www.ecb.com.au

29 Snook St
Clontarf QLD 4019
Australia

Po Box 122
Margate QLD 4019
Australia

Ensure air vents are directing air flow downwards

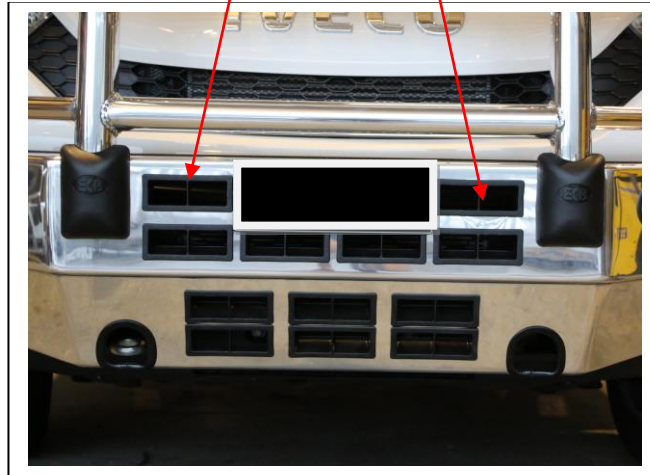


Figure 23



**WORLD'S BEST
ALLOY BULLBARS**

East Coast Bullbars (ECB Pty Ltd)

Tel: 07 3897 5700

Fax: 07 3283 1168

ecb@ecb.com.au www.ecb.com.au

29 Snook St
Clontarf QLD 4019
Australia

Po Box 122
Margate QLD 4019
Australia

We value your comments

Dear Fitter,

ECB would like to know how you went with the installation of this product. We value your comment and may need to contact you to clarify some details so please complete your contact details clearly.

We would appreciate if you could complete as many of the following details as possible.

Your Name:	Your contact No.
Product Part No.	Product Invoice No.
Product Description:	Make, model, and year of vehicle:
Product Work Order No.	Company your from/Company product purchased from:

Date of Fitment: ____/____/____

Was the fitting hardware supplied complete?

Yes

No

If no what was not supplied

Did the installation go well?

Yes

No

Please provide comments

Please draw diagrams if you need to.

Post to
Reply Paid 122
PO Box 122
Margate QLD 4019

Fax to
(07) 3283 1168



**WORLD'S BEST
ALLOY BULLBARS**

East Coast Bullbars (ECB Pty Ltd)

Tel: 07 3897 5700

Fax: 07 3283 1168

ecb@ecb.com.au www.ecb.com.au

29 Snook St
Clontarf QLD 4019
Australia

Po Box 122
Margate QLD 4019
Australia



WORLD'S BEST
ALLOY BULLBARS

East Coast Bullbars (ECB Pty Ltd)

Tel: 07 3897 5700

Fax: 07 3283 1168

ecb@ecb.com.au www.ecb.com.au

29 Snook St
Clontarf QLD 4019
Australia

Po Box 122
Margate QLD 4019
Australia

DESPATCH CHECKLIST BI40SY

Work Order #		See other side of this page for photos of all mounts
Finish:		
Transport:		
Due Date:		

- OC.....1 – Pair Steel mounting brackets.
- BK.....1 – Bolt Kit.
- BK.....2 – Large washer plates (100 x 50 x 6mm)
- BK.....2 – Small washer plates (80 x 50 x 6mm)
- BK.....1 – LED ECB indicator / park light kit.
- BK.....1 – ECB Fog Light kit
- BK.....2 – ECB fog light surrounds
- BK.....1 – Length 6mm clip lock 2100mm long.
- BK.....2 – Lengths 6mm clip lock 300 mm long
- OC.....2 – ECB Overrides – **Fitted to Bar**
- OC.....12 – 6mm Air Vents – **Fitted to Bar** **NOTE: The upper vents in the channel need to be fitted upside down**

_____/_____
Wrapper's initials / Checker initials



Is this product “the best it can be” Yes
If **NO** fix before continuing

All parts checked and completed by:

Nut and bolts: _____ Date __/__/__

Order control: _____ Date __/__/__

Final wrap check: _____ Date __/__/__



WORLD'S BEST
ALLOY BULLBARS

East Coast Bullbars (ECB Pty Ltd)

Tel: 07 3897 5700

Fax: 07 3283 1168

ecb@ecb.com.au www.ecb.com.au

29 Snook St
Clontarf QLD 4019
Australia

Po Box 122
Margate QLD 4019
Australia

Spacer Washers 2 of each in kit



_____/_____
Wrapper's initials / Checker initials