



**WORLD'S BEST
ALLOY BULLBARS**

East Coast Bullbars (ECB Pty Ltd)

Tel: 07 3897 5700

Fax: 07 3283 1168

ecb@ecb.com.au www.ecb.com.au

29 Snook St
Clontarf QLD 4019
Australia

Po Box 122
Margate QLD 4019
Australia

REPLACES: 00.00.00
REVISED: 24.01.18

BI50SY

FITTING INSTRUCTIONS

IVECO C70 VAN & CAB CHASSIS 01/16on BIG TUBE™ PROTECTION BAR WITH FOG LIGHTS VEHICLE FRONTAL PROTECTION SYSTEM (VFPS) FOR AIR BAG & ADR COMPLIANT VEHICLES

Check installation hardware before commencing.

NOTE: It is recommended that a pneumatic air hacksaw and a skilled operator is on hand for the cutting of the vehicle bumper bar.

1. Park vehicle on level ground and apply the hand brake. Check installation hardware and read fitting instructions before commencing. Open bonnet.
2. Release the fasteners and remove the inner wheel arch splash guards from each side of the vehicle. **See figure 1.** Retain for re-fitment
3. Release the fasteners under the front bumper bar. Retain all fasteners for re-fitting. **See figure 2.**
4. Release the caps on the bumper bar covering bumper fasteners. Release the three nuts each side fastening the bumper bar to the chassis and discard. Remove the oblong inserts from the bumper and discard. **See figure 3**
5. Release three nuts under the wheel arch each side fastening the bumper bar reinforcing panel to the chassis bracket. Retain all fasteners. **See figure 4.**
6. Disconnect the indicators and fog lights and remove the bumper bar. Remove the indicators and fog lights from the bumper bar and discard. **See figure 5.**
7. Remove the bumper bar mount from the chassis rail and discard. **See figure 6.**
8. Position the passenger side steel mounting bracket (supplied) using one M12 x 50 x 1.75mm bolt, flat washer, spring washer and nut through the rear hole. In front holes use two M12 x 50 x 1.75 bolt, flat washers, spring washer, washer plate and nut (supplied). Fasten under the steel mounting bracket using two M10 x 1.5 x 40 bolts, flat washers, spring washers, large washer plate and nuts (supplied) **FINGER TIGHTEN ONLY. FINGER TIGHTEN ONLY. See figure 7.**
9. Position the driver's side steel mounting bracket (supplied) using three M12 x 75 x 1.75mm bolts, flat washers, spring washers and small bolt washer plate on bottom holes (supplied) through the side. Fasten under the steel mounting bracket using two M10 x 1.5 x 40mm bolts, flat washers, spring washers, large bolt washer plate and nuts (supplied). **See figure 8.**
10. Align steel mounting brackets so that the alloy mounting brackets on the protection bar will fit to the outside of the steel mounting brackets. **TIGHTEN ALL BOLTS.**
11. Place the bumper bar mount into position each side and mark a line along the inside edge onto the rear of the bumper, offset 15mm and mark a second line to form the initial slot width. **See figure 9.**



**WORLD'S BEST
ALLOY BULLBARS**

East Coast Bullbars (ECB Pty Ltd)

Tel: 07 3897 5700

Fax: 07 3283 1168

ecb@ecb.com.au www.ecb.com.au

29 Snook St
Clontarf QLD 4019
Australia

Po Box 122
Margate QLD 4019
Australia

12. Start the slot cut from the bottom of the lower bumper mount holes and extend up to approximately 20mm above the top of the upper bumper mount hole. **See figure 10. NOTE:** This slot may need to be enlarge later to allow better fitment as the steel mounting brackets need to slide through.
13. Using the harnesses and scotch locks (supplied) attached the Earth wire (white), Indicator Wire (green) and Park wire (black) onto the vehicle wiring harnesses located at the rear of the headlights. Connect the fog light wiring harness (supplied) direct to the vehicles fog light connector. **See figure 12.**
14. Attach the bumper bar back onto the vehicle resulting in the steel mounting brackets protruding through the bumper bar. Align the bumper bar with the bumper bar mounting and lightly fasten using 5/16 flat washers and M8 nyloc nuts (supplied) in top holes. Align the rear bumper bar mounting (located under the wheel arch) and fasten using the original fasteners. Remove the oil cooler coil pipe and using the mount as a guide drill a 10mm hole completely through the bumper. Using a 32mm hole saw drill through the outer face of the bumper and fasten using M8 x 45 bolt, flat washers and nyloc nuts (supplied). **See figure 13.**
15. Place the tow hook into position and **TIGHEN BY HAND** fully then using a long bar tighten another ½ turn to lock into place. The tow hook will remain in place after the protection bar is fitted. The tow hook should end up horizontal after tightening. **See figure 14.**
16. Attach ECB fog lights to protection bar. Place M6 x 20 bolts, spring washers (supplied) through light mount from inside and attach nut to top. Slide assembly into light mount in Protection bar and centralize light to hole. **TIGHTEN FIRM ONLY. See figure 15.** Fit ECB fog light trims (supplied) to protection bar. **NOTE:** Wider part of trim faces to centre.
17. Fit ECB LED indicator/DRL/park lights into protection bar as per instructions supplied with the LED indicator kit. **NOTE:** Ensure park light is to outside. **See figure 16.**
18. Screw resistor to welded plate on lower rear leg on channel using 6g x 16 screws (supplied). Wire one side of resistor into positive of indicator (green) and other side to negative (white). Shrink wrap all connections with heat shrink (supplied).
19. Attach 6mm clip lock trim (supplied) to top of ECB protection bar. **NOTE:** Trim off lower edge on an angle so trim will sit flush with end of protection bar. **See figures 17, 18 and 19.**
20. Attached 6mm clip lock trim (supplied) to tow hook cut outs in the centre skirt. **See figure 20.**
21. Attach protection bar to the steel mounting brackets using M12 x 1.75 x 50mm bolts, flat washers, spring washers and nuts (supplied) **FINGER TIGHTEN ONLY.** Align protection bar with vehicle **See figures 21 and 22 TIGHTEN ALL BOLTS.**
22. Check that the upper air vents in the protection bar are fitted to direct the air flow downward. **See figure 23.**
23. Check for correct operation of lights and cable tie the wiring up to prevent damage, refit the inner wheel arch splash guards.
24. Ensure number plate does not cover air vents **see figure 23.**

ENSURE NUMBER PLATE IS CLEARLY VISABLE

Note: When fitting/refitting the licence plate to the vehicle, ensure there is no obstruction to licence plate vision in accordance with local authorities. If required relocate licence plate to an alternate location.



**WORLD'S BEST
ALLOY BULLBARS**

East Coast Bullbars (ECB Pty Ltd)

Tel: 07 3897 5700

Fax: 07 3283 1168

ecb@ecb.com.au www.ecb.com.au

29 Snook St
Clontarf QLD 4019
Australia

Po Box 122
Margate QLD 4019
Australia

Further VFPS Notes:

- a) Do not attach VFPS to the vehicle using anchorages not intended for this purpose (e.g. engine mounting bolts).
- b) Do not use this product for any vehicle make or model, other than those specified by the VFPS manufacturer.
- c) Do not remove the plaque or label from the VFPS.
- d) Do not modify the structure of the VFPS in any way.
- e) No accessory or fitment should project forward of the VFPS forward profile.
- f) **ENSURE THESE INSTRUCTIONS ARE LEFT WITH VEHICLE OWNER AND/OR OPERATOR.**

IMPORTANT INFORMATION

Periodically check bolts and nuts for correct tightness, especially if travelling on rough roads

FITTING KIT

| | |
|---|--|
| 1 – Pair steel mounting brackets. | 6 – 5/16 x 1-1/4 x 10 heavy duty flat washers. |
| 2 – Large bolt washer plates (100 x 50 x 6mm) | 2 – M6 x 20mm bolts. |
| 2 – Small bolt washer plates (80 x 50 x 6mm) | 2 – M6 spring washers. |
| 3 – M12 x 1.75 x 75mm bolts. | 2 – M6 nuts |
| 9 – M12 x 1.75 x 50mm bolts. | 4 – 6g x 16 screws |
| 21 – M12 flat washers. | 1 – 2100mm length 6mm clip lock. |
| 12 – M12 spring washers. | 2 – 300mm lengths 6mm clip lock. |
| 9 – M12 x 1.75 nuts. | 1 – Pair Ind / DRL / park lights. (ICLED105) |
| 4 – M10 x 1.5 x 40mm bolts. | 8 – Scotch locks. |
| 8 – M10 flat washers. | 2 – 50 watt resistors (ICLED R12 / 2) |
| 4 – M10 spring washers. | 1 – Pair ECB Fog lights. |
| 4 – M10 x 1.5 nuts. | 1 – Quick Click Kit (IC10D40S1004ECBH) |
| 2 – M8 x 1.25 x 45mm hex bolt. | 2 – Fog light trims. |
| 6 – M8 x 1.25 nyloc nuts. | 2 – 300mm Cable ties |

Retain the fasteners and inner splash guards



Figure 1

Release the fasteners



Figure 2



**WORLD'S BEST
ALLOY BULLBARS**

East Coast Bullbars (ECB Pty Ltd)

Tel: 07 3897 5700

Fax: 07 3283 1168

ecb@ecb.com.au www.ecb.com.au

29 Snook St
Clontarf QLD 4019
Australia

Po Box 122
Margate QLD 4019
Australia

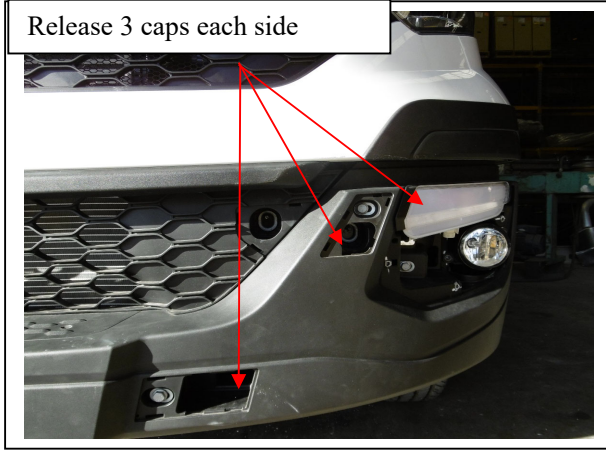


Figure 3

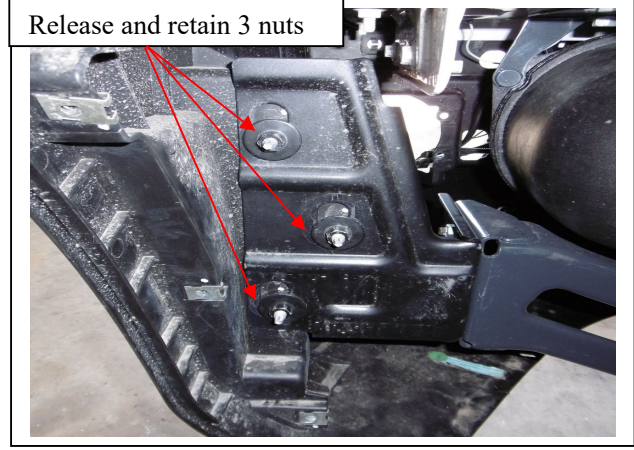


Figure 4



Figure 5

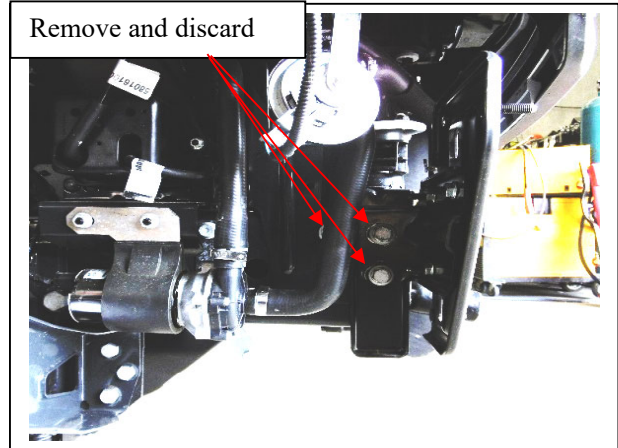
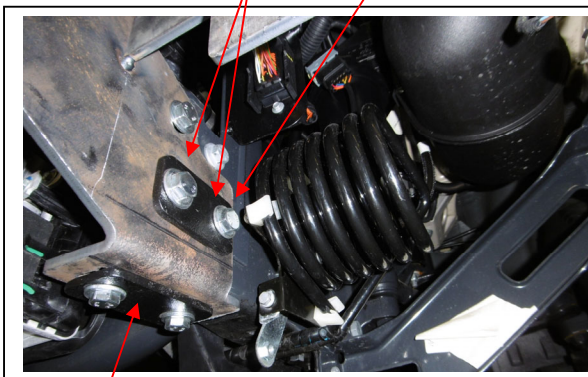


Figure 6

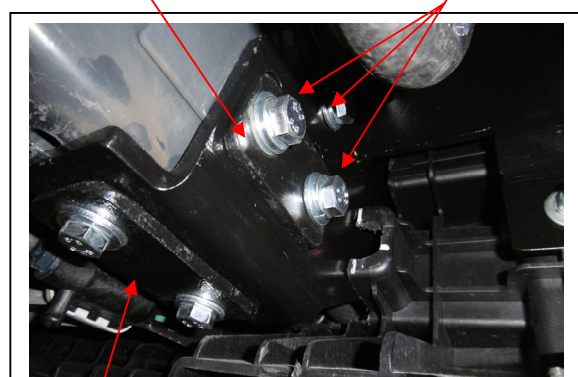
M12 x 1.75 x 50mm bolts
Small bolt washer plate
(80 x 50mm)



Large bolt washer
plate (100 x 50mm)

Figure 7

Small bolt washer plate
(80 x 50mm)
M12 x 1.75 x 75mm bolts



Large bolt washer
plate (100 x 50mm)

Figure 8



**WORLD'S BEST
ALLOY BULLBARS**

East Coast Bullbars (ECB Pty Ltd)

Tel: 07 3897 5700

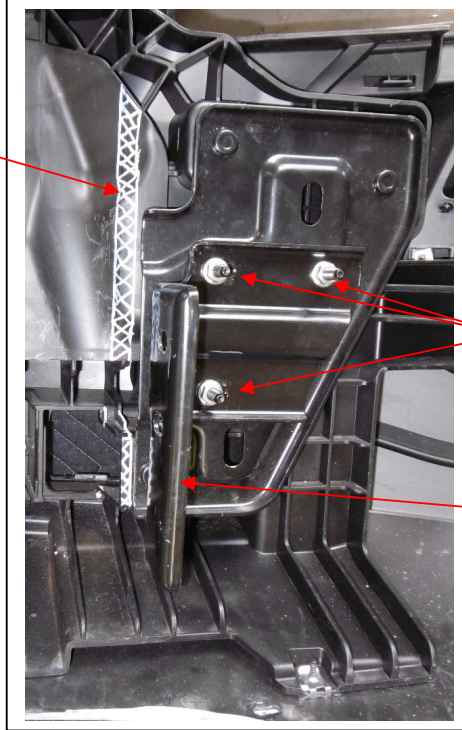
Fax: 07 3283 1168

ecb@ecb.com.au www.ecb.com.au

29 Snook St
Clontarf QLD 4019
Australia

Po Box 122
Margate QLD 4019
Australia

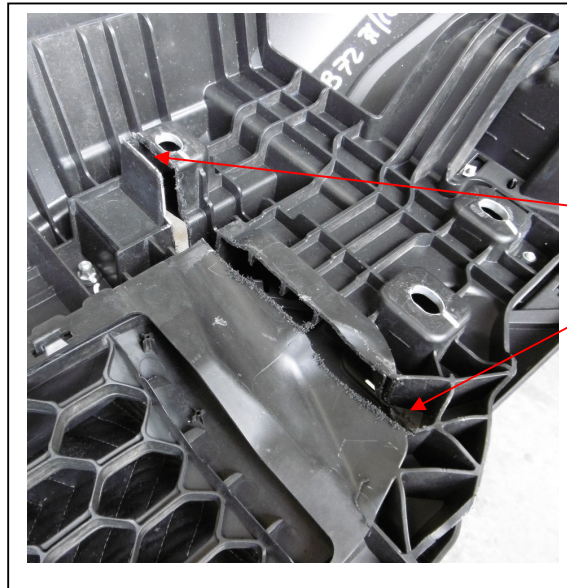
Mark along inside edge of mount
and 15mm outwards and cut slot



Retain the fasteners

Discard the inner angle section

Figure 9



Start slot cut at bottom and
extend up to approx. 20mm
above the top of the bumper
mount hole

Figure 10



**WORLD'S BEST
ALLOY BULLBARS**

East Coast Bullbars (ECB Pty Ltd)

Tel: 07 3897 5700

Fax: 07 3283 1168

ecb@ecb.com.au www.ecb.com.au

29 Snook St
Clontarf QLD 4019
Australia

Po Box 122
Margate QLD 4019
Australia

Connect fog light adaptor to harness to vehicle fog light connector



Figure 11

Drill through bumper to outer face

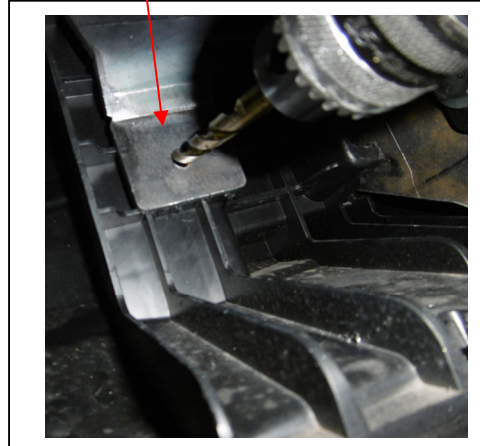


Figure 12

Align bumper bar mounts and lightly fasten

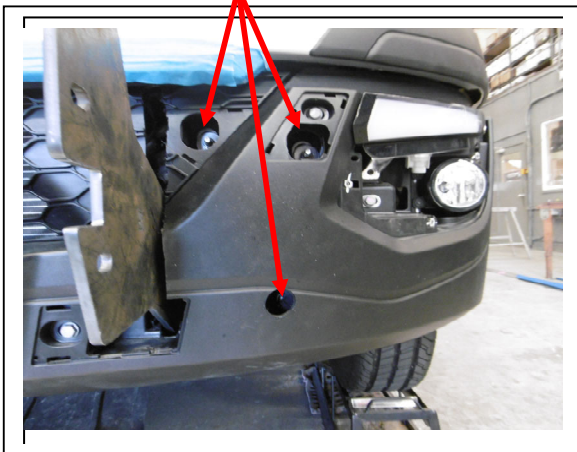


Figure 13

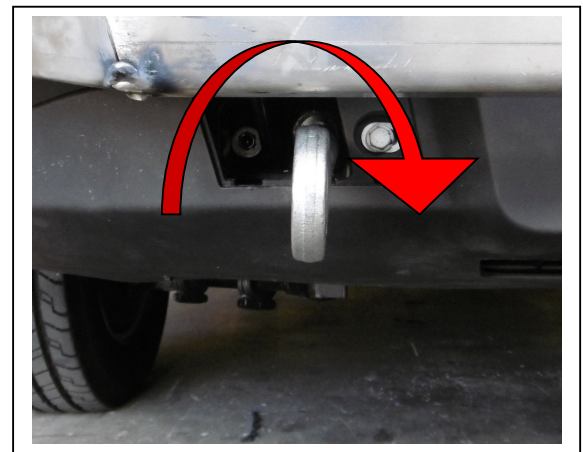
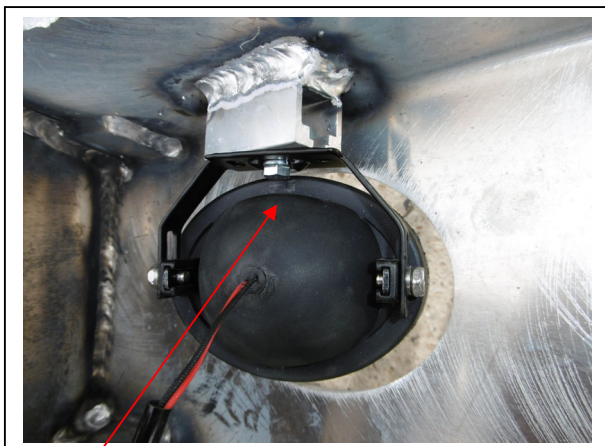
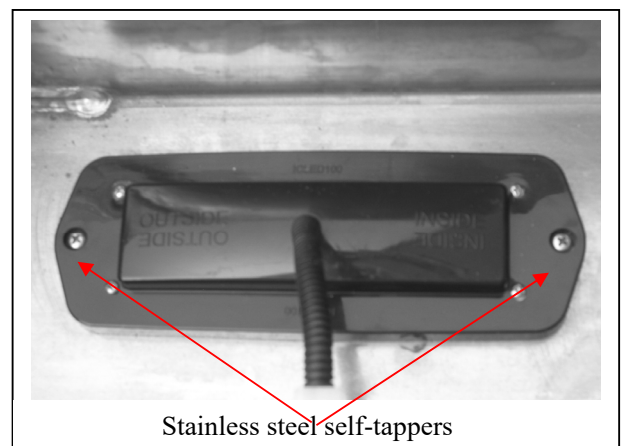


Figure 14



M6

Figure 16



Stainless steel self-tappers

Figure 15



**WORLD'S BEST
ALLOY BULLBARS**

East Coast Bullbars (ECB Pty Ltd)

Tel: 07 3897 5700

Fax: 07 3283 1168

ecb@ecb.com.au www.ecb.com.au

29 Snook St
Clontarf QLD 4019
Australia

Po Box 122
Margate QLD 4019
Australia

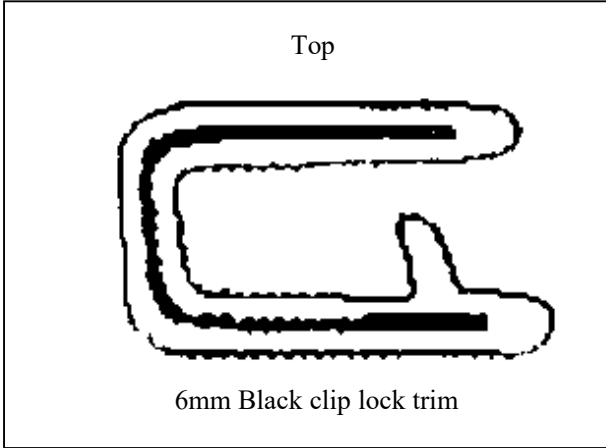


Figure 17

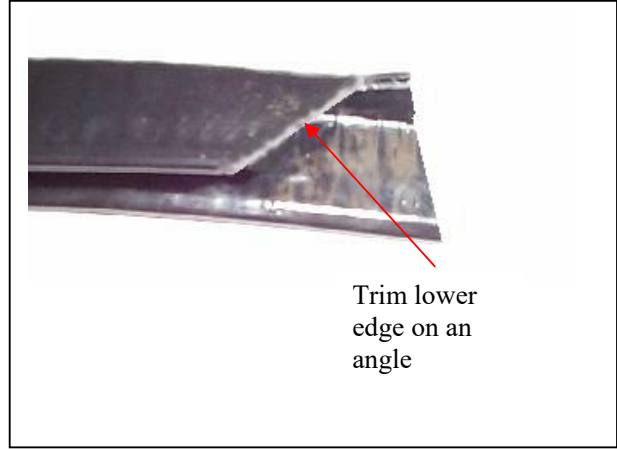


Figure 18

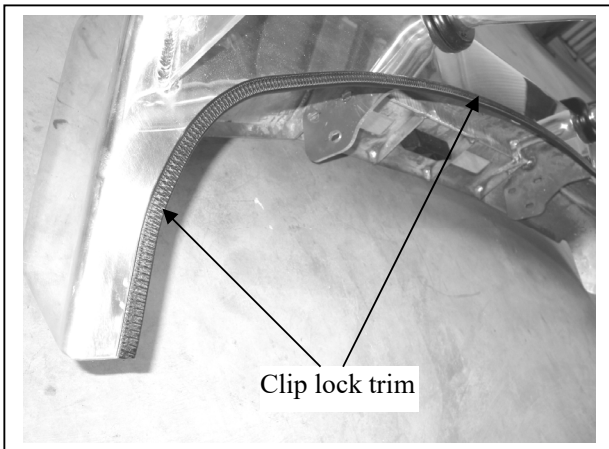


Figure 19

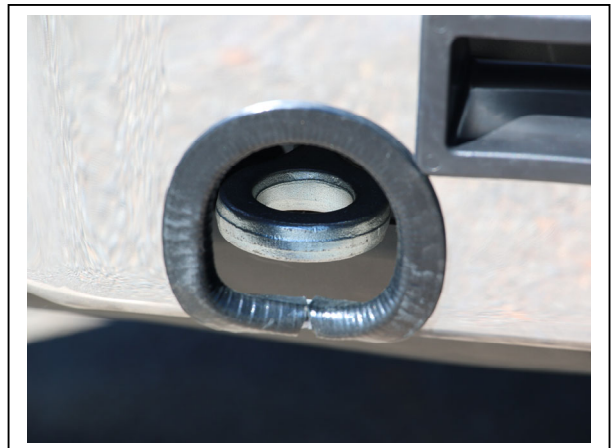


Figure 20



Figure 21 – Front view shown



Figure 22 – Side view shown



WORLD'S BEST
ALLOY BULLBARS

East Coast Bullbars (ECB Pty Ltd)

Tel: 07 3897 5700

Fax: 07 3283 1168

ecb@ecb.com.au www.ecb.com.au

29 Snook St
Clontarf QLD 4019
Australia

Po Box 122
Margate QLD 4019
Australia

Ensure air vents are directing air flow downwards

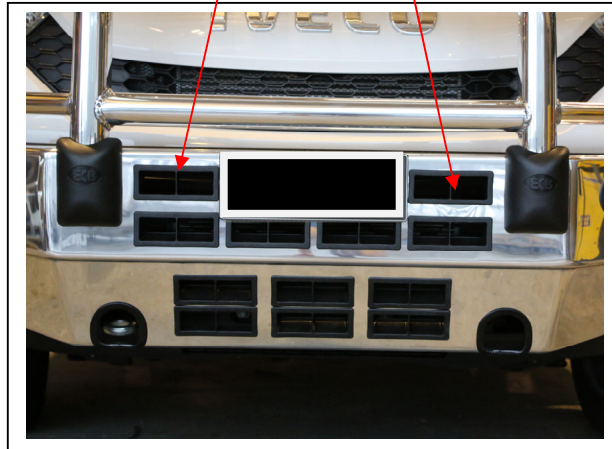
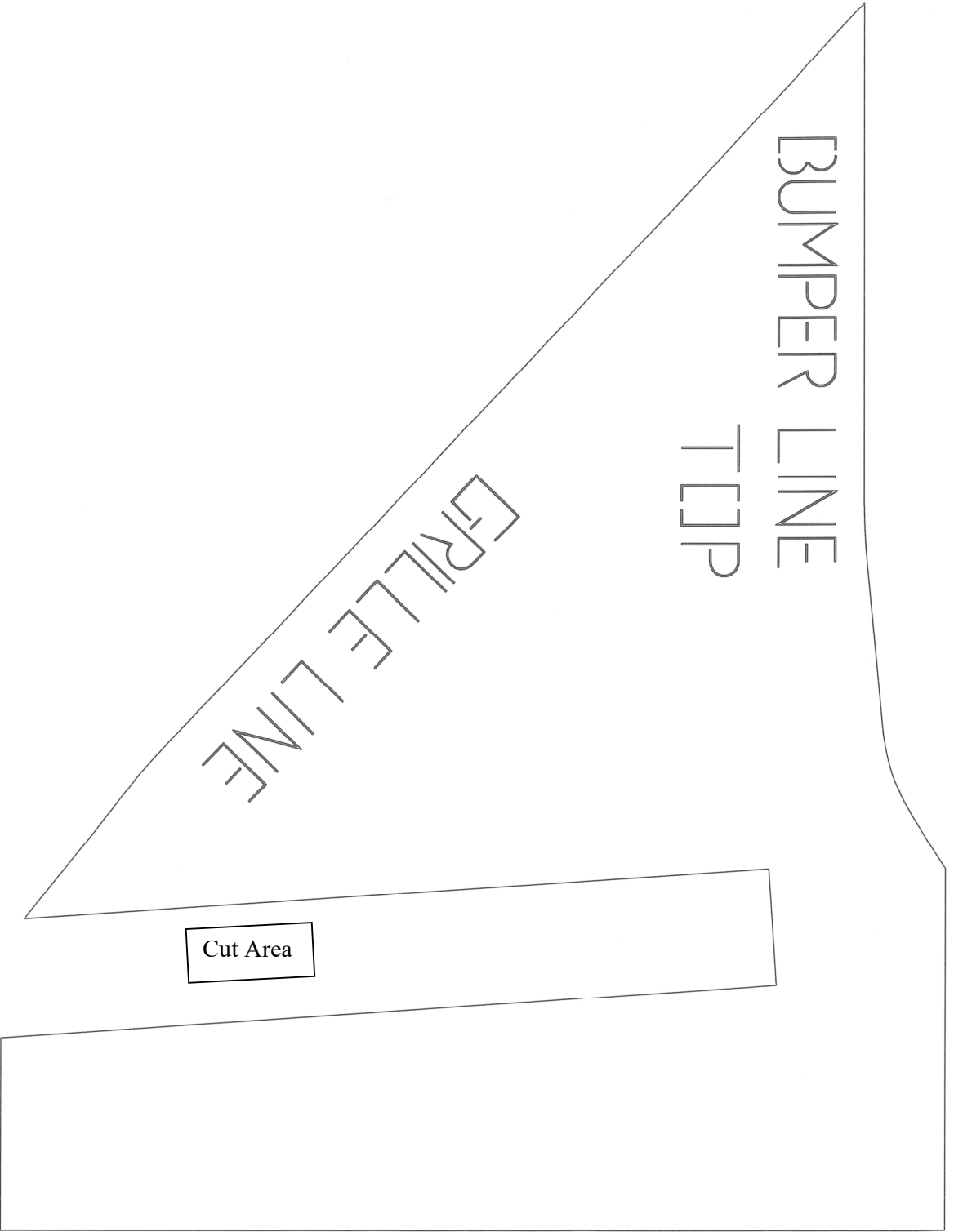


Figure 23



BUMPER LINE

TCCP

GRILLE LINE

Cut Area



**WORLD'S BEST
ALLOY BULLBARS**

East Coast Bullbars (ECB Pty Ltd)

Tel: 07 3897 5700

Fax: 07 3283 1168

ecb@ecb.com.au www.ecb.com.au

29 Snook St
Clontarf QLD 4019
Australia

Po Box 122
Margate QLD 4019
Australia



**WORLD'S BEST
ALLOY BULLBARS**

East Coast Bullbars (ECB Pty Ltd)

Tel: 07 3897 5700

Fax: 07 3283 1168

ecb@ecb.com.au www.ecb.com.au

29 Snook St
Clontarf QLD 4019
Australia

Po Box 122
Margate QLD 4019
Australia



**WORLD'S BEST
ALLOY BULLBARS**

East Coast Bullbars (ECB Pty Ltd)

Tel: 07 3897 5700

Fax: 07 3283 1168

ecb@ecb.com.au www.ecb.com.au

29 Snook St
Clontarf QLD 4019
Australia

Po Box 122
Margate QLD 4019
Australia

We value your comments

Dear Fitter,

ECB would like to know how you went with the installation of this product. We value your comment and may need to contact you to clarify some details so please complete your contact details clearly.

We would appreciate if you could complete as many of the following details as possible.

| | |
|-------------------------------|--|
| Your Name: | Your contact No. |
| Product Part No. | Product Invoice No. |
| Product Description: | Make, model, and year of vehicle: |
| Product Work Order No. | Company your from/Company product purchased from: |

Date of Fitment: ____/____/____

Was the fitting hardware supplied complete?

Yes

No

If no what was not supplied

Did the installation go well?

Yes

No

Please provide comments

Please draw diagrams if you need to.

Post to
Reply Paid 122
PO Box 122
Margate QLD 4019

Fax to
(07) 3283 1168



**WORLD'S BEST
ALLOY BULLBARS**

East Coast Bullbars (ECB Pty Ltd)

Tel: 07 3897 5700

Fax: 07 3283 1168

ecb@ecb.com.au www.ecb.com.au

29 Snook St
Clontarf QLD 4019
Australia

Po Box 122
Margate QLD 4019
Australia



WORLD'S BEST
ALLOY BULLBARS

East Coast Bullbars (ECB Pty Ltd)

Tel: 07 3897 5700

Fax: 07 3283 1168

ecb@ecb.com.au www.ecb.com.au

29 Snook St
Clontarf QLD 4019
Australia

Po Box 122
Margate QLD 4019
Australia

DESPATCH CHECKLIST BI50SY

| | | |
|--------------|--|---|
| Work Order # | | See other side of this page for photos of all mounts |
| Finish: | | |
| Transport: | | |
| Due Date: | | |

- OC.....1 – Pair Steel mounting brackets
- BK.....1 – Bolt Kit
- BK.....2 – Large washer plates (100 x 50 x 6mm)
- BK.....2 – Small washer plates (80 x 50 x 6mm)
- BK.....1 – LED ECB indicator / Park light / DRL / kit (ICLED105ECB)
- BK.....1 – ECB Fog Light kit
- BK.....2 – ECB fog light surrounds
- BK.....1 – Quick click kit (IC10D40S1004ECBH)
- BK.....1 – Length 6mm clip lock 2100mm long
- BK.....2 – Lengths 6mm clip lock 300 mm long
- OC.....2 – ECB Overrides – **Fitted to Bar**
- OC.....12 – 6mm Air Vents – **Fitted to Bar** **NOTE: The upper vents in the channel need to be fitted upside down**

_____/_____
Wrapper's initials /
Checker initials



Is this product “the best it can be” Yes
If **NO** fix before continuing

All parts checked and completed by:

Nut and bolts: _____ Date __/__/__

Order control: _____ Date __/__/__

Final wrap check: _____ Date __/__/__



**WORLD'S BEST
ALLOY BULLBARS**

East Coast Bullbars (ECB Pty Ltd)

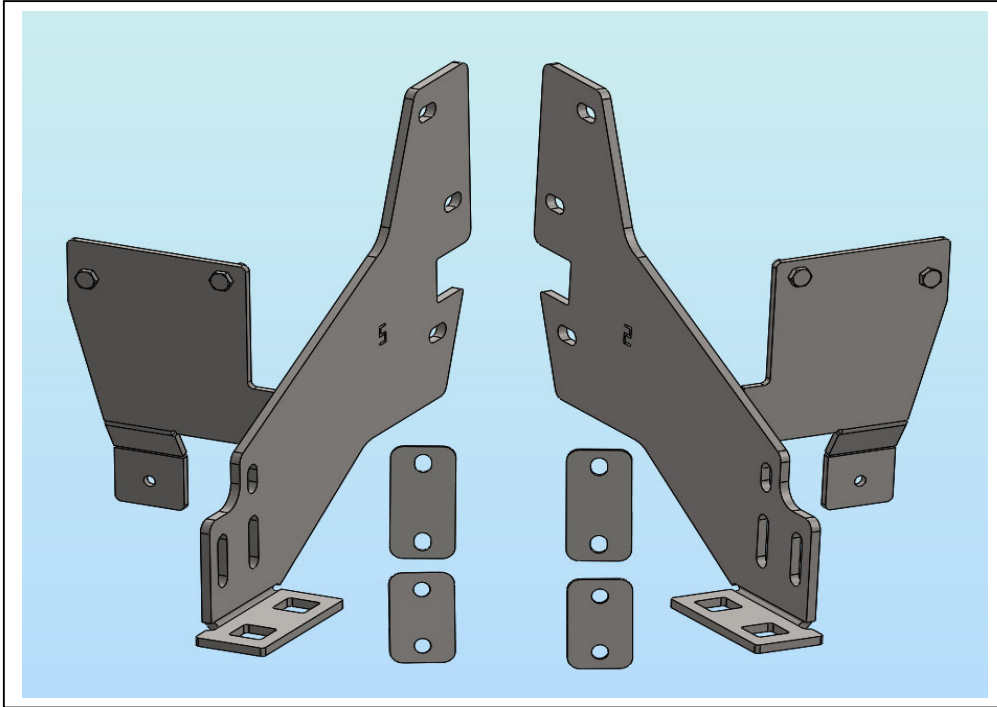
Tel: 07 3897 5700

Fax: 07 3283 1168

ecb@ecb.com.au www.ecb.com.au

29 Snook St
Clontarf QLD 4019
Australia

Po Box 122
Margate QLD 4019
Australia



Wrapper's initials / Checker initials